



ADM Investor
Services, Inc.



Daily Futures Market Commentary Livestock Outlook

TUESDAY MORNING JUNE 09, 2026 LIVESTOCK REPORT
CHRIS LEHNER, SENIOR LIVESTOCK ANALYST | 312.242.7942 | 913.787.6804 |
CHRIS.LEHNER@ADMIS.COM

CATTLE

JUNE 08, 2026	102,000
WEEK AGO	104,000
YEAR AGO	111,939
2026 YEAR TO DATE	11,819,568
2025 YEAR TO DATE	13,009,962
PERCENT CHANGE YEAR TO DATE	- 9.2%

[HTTPS://WWW.AMS.USDA.GOV/MNREPORTS/AMS_3208.PDF](https://www.ams.usda.gov/mnreports/ams_3208.pdf)

FOR WEEK ENDING JUNE 06, 2026 CATTLE SLAUGHTER WAS 533,000. YEAR TO DATE CATTLE SLAUGHTER WAS DOWN 1,180,455 HEAD.

=====

2:00 PM JUNE 08, 2026

BOXED BEEF	CHOICE	SELECT
CURRENT CUTOUT VALUES:	392.20	378.09
CHANGE FROM PRIOR DAY:	(0.50)	(4.60)
CHOICE/SELECT SPREAD:	14.11	
TOTAL LOAD COUNT (CUTS, TRIMMINGS, GRINDS):	116	
CURRENT 5 DAY SIMPLE AVERAGE:	393.62	383.61

=====

ADMIS.com | 312.242.7000

Chicago | New York | Houston | Amsterdam | London | Hong Kong | Singapore | Taipei

This material is intended to be a solicitation.

Futures and options trading involve significant risk of loss and may not be suitable for everyone. Therefore, carefully consider whether such trading is suitable for you in light of your financial condition. The opinions and viewpoints expressed herein are limited to that of the individual author(s) as of a specified date. They are subject to change based on market conditions or other considerations. They do not constitute individualized recommendations or take into account the financial considerations or trading objectives of individual customers. This publication is intended to assist in your analysis and evaluation of the futures and options markets. However, any decisions to buy, sell or hold a futures or options position are entirely your own and should not in any way deemed to be endorsed by ADM Investor Services, Inc. ("ADMIS"). Transactions in options carry a high degree of risk. Purchasers and seller of options should familiarize themselves with the type of option (i.e., put or call) which they contemplate trading and the associated risks. You should calculate the extent to which the value of the options must increase for your position to become profitable, taking into account the premium and all transaction costs. Spread strategies using combinations of positions, such as spread and straddle positions may be as risky as taking a simple long or short position. Actual results or performance may vary from those expressed or implied herein. Past performance does not guarantee future results. The information and comments contained herein are provided by ADM Investor Services, Inc. ("ADMIS") and NOT ADM. Any reproduction or retransmission of this report without the express written consent of ADMIS is strictly prohibited.

Copyright © ADM Investor Services, Inc.

CME BOXED BEEF INDEX ON 06/05/2026 WAS 392.23 UP .12 FROM PREVIOUS DAY

=====

2:00 PM JUNE 08, 2026

PRIMAL RIB	567.47	491.54
PRIMAL CHUCK	332.50	336.56
PRIMAL ROUND	333.10	329.48
PRIMAL LOIN	508.10	482.90
PRIMAL BRISKET	345.46	338.84
PRIMAL SHORT PLATE	296.94	296.94
PRIMAL FLANK	252.93	247.99

2:00 PM JUNE 05, 2026

PRIMAL RIB	561.33	537.11
PRIMAL CHUCK	337.41	334.91
PRIMAL ROUND	330.65	329.04
PRIMAL LOIN	509.14	479.31
PRIMAL BRISKET	349.25	353.63
PRIMAL SHORT PLATE	296.78	296.78
PRIMAL FLANK	249.74	249.04

=====

LOAD COUNT AND CUTOUT VALUE SUMMARY

DATE	CHOICE	SELECT	TRIM	GRINDS	TOTAL	CHOICE	SELECT
06/05	68	11	4	8	91	392.70 FRIDAY	382.69
06/04	102	7	6	12	128	392.66	383.04
06/03	51	9	20	11	91	395.86	384.43
06/02	80	17	0	19	115	394.07	384.81
06/01	51	9	8	12	79	392.83	383.09
05/29	46	9	15	13	83	391.47 FRIDAY	383.18

=====

JUNE 08, 2026 (ONE LOAD EQUALS 40,000 POUNDS)

CHOICE CUTS	77.64 LOADS	3,105,410 POUNDS
SELECT CUTS	21.28 LOADS	851,022 POUNDS
TRIMMINGS	4.09 LOADS	163,782 POUNDS
GROUND BEEF	13.01 LOADS	520,514 POUNDS

=====

ADMIS.com | 312.242.7000

Chicago | New York | Houston | Amsterdam | London | Hong Kong | Singapore | Taipei

This material is intended to be a solicitation.

Futures and options trading involve significant risk of loss and may not be suitable for everyone. Therefore, carefully consider whether such trading is suitable for you in light of your financial condition. The opinions and viewpoints expressed herein are limited to that of the individual author(s) as of a specified date. They are subject to change based on market conditions or other considerations. They do not constitute individualized recommendations or take into account the financial considerations or trading objectives of individual customers. This publication is intended to assist in your analysis and evaluation of the futures and options markets. However, any decisions to buy, sell or hold a futures or options position are entirely your own and should not in any way deemed to be endorsed by ADM Investor Services, Inc. ("ADMIS"). Transactions in options carry a high degree of risk. Purchasers and seller of options should familiarize themselves with the type of option (i.e., put or call) which they contemplate trading and the associated risks. You should calculate the extent to which the value of the options must increase for your position to become profitable, taking into account the premium and all transaction costs. Spread strategies using combinations of positions, such as spread and straddle positions may be as risky as taking a simple long or short position. Actual results or performance may vary from those expressed or implied herein. Past performance does not guarantee future results. The information and comments contained herein are provided by ADM Investor Services, Inc. ("ADMIS") and NOT ADM. Any reproduction or retransmission of this report without the express written consent of ADMIS is strictly prohibited.

JUNE 2026 LIVE CATTLE DELIVERIES

0 DELIVERIES

DATE 06/08/2026 SETTLEMENT: \$246.52

OLDEST LONG 08/11/2025 \$221.87

JUNE LIVE CATTLE OPEN INTEREST 06/09/2026 = 16,650 CONTRACTS

=====

DAILY DIRECT 5 DAY WEIGHTED AVERAGE STEER PRICE JUNE 08, 2027 \$256.62

JUNE 2026 LIVE CATTLE SETTLED ON JUNE 08, 2026 AT \$246.52

JUNE LIVE CATTLE FUTURES ARE \$10.10 UNDER THE WEIGHTED AVERAGE STEER PRICE 06/08/2026

=====

NATIONAL GRADING SUMMARY

AS OF MAY 30 2026 - UPDATED JUNE 07, 2026

PRIME 15.57%

CHOICE 72.90%

SELECT 8.56%

PRIME/CHOICE 88.47%

=====

IMPORTED BEEF PASSED FOR ENTRY INTO THE U.S.

YEAR TO DATE: 05/24/2026 TO 5/30/2026 WEEK 22

FRESH BEEF (METRIC TONS)

	2026	2025	% CHANGE
TOTAL	794,147	710,927	12%

PROCESSED BEEF(METRIC TONS)

TOTAL	35,642	34,582	3%
--------------	---------------	---------------	-----------

=====

THE SPREAD BETWEEN THE STEER AVERAGE PRICE AT \$256.67 AND JUNE LIVE CATTLE FUTURES \$246.52 IS VERY WIDE WITH FIRST NOTICE JUNE 8, 2026.

=====

ADMIS.com | 312.242.7000

Chicago | New York | Houston | Amsterdam | London | Hong Kong | Singapore | Taipei

This material is intended to be a solicitation.

Futures and options trading involve significant risk of loss and may not be suitable for everyone. Therefore, carefully consider whether such trading is suitable for you in light of your financial condition. The opinions and viewpoints expressed herein are limited to that of the individual author(s) as of a specified date. They are subject to change based on market conditions or other considerations. They do not constitute individualized recommendations or take into account the financial considerations or trading objectives of individual customers. This publication is intended to assist in your analysis and evaluation of the futures and options markets. However, any decisions to buy, sell or hold a futures or options position are entirely your own and should not in any way deemed to be endorsed by ADM Investor Services, Inc. ("ADMIS"). Transactions in options carry a high degree of risk. Purchasers and seller of options should familiarize themselves with the type of option (i.e., put or call) which they contemplate trading and the associated risks. You should calculate the extent to which the value of the options must increase for your position to become profitable, taking into account the premium and all transaction costs. Spread strategies using combinations of positions, such as spread and straddle positions may be as risky as taking a simple long or short position. Actual results or performance may vary from those expressed or implied herein. Past performance does not guarantee future results. The information and comments contained herein are provided by ADM Investor Services, Inc. ("ADMIS") and NOT ADM. Any reproduction or retransmission of this report without the express written consent of ADMIS is strictly prohibited.

Copyright © ADM Investor Services, Inc.

NEW WORLD SCREWWORM NEWS

2 MORE NEW WORLD SCREWWORM CASES CONFIRMED IN TEXAS, RAISING STATE'S TOTAL CASELOAD TO 4

THE USDA IS SETTING UP 12 MILE QUARANTINES AROUND THE AREAS WHERE THE SCREWWORM HAS BEEN DETECTED.

CANADA IS BANNING LIVESTOCK IMPORTS FROM TEXAS DUE TO THE SPREAD OF THE NEW WORLD SCREWWORM.

FRIDAY, A CALF IN ZAVALA COUNTY TEXAS WAS REPORTED WITH NWS. EARLY MONDAY MORE CASES OF THE NEW WORLD SCREWWORM WERE CONFIRMED IN A CALF IN LA SALLE COUNTY, A GOAT IN GILLESPIE COUNTY, TEXAS, AND A DOG FOR THE FIRST CASE IN NEW MEXICO.

THE USDA IS CONCERNED ABOUT WILD ANIMALS WOUNDED OR KILLED THAT AREN'T REPORTED. TEXAS ALSO HAS THE LARGEST POPULATION OF FERAL HOGS WITH AN ESTIMATED 3 MILLION THAT ARE VULNERABLE TO NWS AND CAN BE CARRIERS. OKLAHOMA, ANOTHER BORDER STATE HAS THE SECOND LARGEST POPULATION OF FERAL HOGS WITH AN ESTIMATE OF 1.5 MILLION HOGS.

IT IS EXTREMELY LIKELY MORE CATTLE HAVE BEEN INFECTED BUT NOT REPORTED.

NWS CAN INFECT ALL LIVESTOCK, DOMESTIC AND WILD, AS WELL AS PEOPLE. ALL BORDER STATES ARE AT RISK .

WARM WEATHER INCREASES FLY GROWTH.

=====

CDC WEBISTE ABOUT NEW WORLD SCREWWORM

[New World Screwworm Outbreak | New World Screwworm | CDC](#)

=====

NEWS THAT IT HAS AFFECTED A DOG MIGHT SPOOK PEOPLE THAT BUY BEEF.

HOWEVER, NWS HASN'T SHOWN TO BE SPREAD BY BEEF.

FOR INSTANCE, THE U.S. HAS BEEN IMPORTING IN 2026 MORE MEXICAN BEEF. SO FAR IN 2026 THE U.S. HAS IMPORTED FROM MEXICO 110,032 MT OF FRESH BEEF UP 23% YTD AND 1,587 MT OF PROCESSED BEEF, UP 58% YTD

=====

ADMIS.com | 312.242.7000

Chicago | New York | Houston | Amsterdam | London | Hong Kong | Singapore | Taipei

This material is intended to be a solicitation.

Futures and options trading involve significant risk of loss and may not be suitable for everyone. Therefore, carefully consider whether such trading is suitable for you in light of your financial condition. The opinions and viewpoints expressed herein are limited to that of the individual author(s) as of a specified date. They are subject to change based on market conditions or other considerations. They do not constitute individualized recommendations or take into account the financial considerations or trading objectives of individual customers. This publication is intended to assist in your analysis and evaluation of the futures and options markets. However, any decisions to buy, sell or hold a futures or options position are entirely your own and should not in any way deemed to be endorsed by ADM Investor Services, Inc. ("ADMIS"). Transactions in options carry a high degree of risk. Purchasers and seller of options should familiarize themselves with the type of option (i.e., put or call) which they contemplate trading and the associated risks. You should calculate the extent to which the value of the options must increase for your position to become profitable, taking into account the premium and all transaction costs. Spread strategies using combinations of positions, such as spread and straddle positions may be as risky as taking a simple long or short position. Actual results or performance may vary from those expressed or implied herein. Past performance does not guarantee future results. The information and comments contained herein are provided by ADM Investor Services, Inc. ("ADMIS") and NOT ADM. Any reproduction or retransmission of this report without the express written consent of ADMIS is strictly prohibited.

Copyright © ADM Investor Services, Inc.

EXPECT VOLATILITY. FORMULA TRADES ARE ABOUT MOVEMENT AND TIME ON COMPONENTS SET IN FORMULAS THAT HAVE NOTHING TO DO WITH FUNDAMENTLS.

SINCE JUNE 3RD, BULL SPREADS HAVE REVERSED FOR MONTHS AUGUST ON OUT.

=====
PACKERS LAST WEEK STARTED THE WEEK BUYING CASH CATTLE FROM \$255.00 TO 257.00 WITH A HANDFUL UP TO 260.00. FRIDAY, THEY FINISHED BUYING AT 257.00 TO 258.00.DRESSED PRICES MOSTLY 405.00

=====
WITH THE SCREWWORM NOW IN THE U.S. IT WOULD BE A SURPRISE IF CHINA BUYS MORE BEEF. ALSO OTHER COUNTRIES MAY NOT BUY OR CANCEL.

=====
TRADERS WILL ALSO BE WATCHING BEEF PRICES AND FUEL COSTS.

=====
ESTIMATED WEEKLY BEEF PRODUCTION UNDER FEDERAL INSPECTION WEEK ENDING JUNE 06, 2026

FOR WEEK ENDING JUNE 06, 2026 CATTLE WEIGHTS WERE 1470 UP 1 POUND FROM LAST WEEK AND UP 59 POUNDS FROM A YEAR AGO.

PRODUCTION WAS UP 19.0% COMPARED TO THE PREVIOUS WEEK AND DOWN -4.3% COMPARED TO SAME PERIOD A YEAR AGO. YEAR TO DATE PRODUCTION IS DOWN -6.5%

=====
EXPORTS

BEEF SALES EXPORTS FOR WEEK ENDING MAY 29TH WERE 4,900 MT DOWN 62% FROM A WEEK AGO AND DOWN 38%% ON THE 4 WEEK AVERAGE. THE LARGEST BUYERS WERE JAPAN AT 1800 MT AND MEXICO TAKING 1,100 MT

=====
NATIONAL DAILY DIRECT CATTLE

5 DAY ACCUMULATED WGHTEG AVG 06/08/2026

LIVE STEER:	1532	\$256.62	20,414
LIVE HEIFER	1364	\$256.43	11,031
DRESSED STEER	995	\$404.74	19,694
DRESSED HEIFER:	889	\$405.06	3,985

ADMIS.com | 312.242.7000

Chicago | New York | Houston | Amsterdam | London | Hong Kong | Singapore | Taipei

This material is intended to be a solicitation.

Futures and options trading involve significant risk of loss and may not be suitable for everyone. Therefore, carefully consider whether such trading is suitable for you in light of your financial condition. The opinions and viewpoints expressed herein are limited to that of the individual author(s) as of a specified date. They are subject to change based on market conditions or other considerations. They do not constitute individualized recommendations or take into account the financial considerations or trading objectives of individual customers. This publication is intended to assist in your analysis and evaluation of the futures and options markets. However, any decisions to buy, sell or hold a futures or options position are entirely your own and should not in any way deemed to be endorsed by ADM Investor Services, Inc. ("ADMIS"). Transactions in options carry a high degree of risk. Purchasers and seller of options should familiarize themselves with the type of option (i.e., put or call) which they contemplate trading and the associated risks. You should calculate the extent to which the value of the options must increase for your position to become profitable, taking into account the premium and all transaction costs. Spread strategies using combinations of positions, such as spread and straddle positions may be as risky as taking a simple long or short position. Actual results or performance may vary from those expressed or implied herein. Past performance does not guarantee future results. The information and comments contained herein are provided by ADM Investor Services, Inc. ("ADMIS") and NOT ADM. Any reproduction or retransmission of this report without the express written consent of ADMIS is strictly prohibited.

Copyright © ADM Investor Services, Inc.

USDA POSTED SUMMARY CATTLE PRICES ON 06/08/2026

IA/MN – CASH FOB – NO REPORTABLE TRADE
DRESSED DELIVERED 403.00-408.00 AVE 403.47 STEERS, HEIFERS, MIXED
LIVE DELIVERED NO REPORTABLE TRADE.
DRESSED FOB NO REPORTABLE TRADE.

NE – CASH FOB - NO REPORTABLE TRADE.
DRESSED DELIVERED 403.00 ON 207 HEAD
LIVE DELIEVERED NO REPORTABLE TRADE.
DRESSED FOB - NO REPORTABLE TRADE

KS – CASH FOB NO REPORTABLE TRADE.
LIVE DELIVERED - REPORTABLE TRADE
DRESSED DELIVERED NO REPORTABLE TRADE.
DRESSED FOB NO REPORTABLE TRADE.

TX/OK/NM – NO REPORTABLE TRADE.

=====

STERLING MARKETING BEEF MARGINS WEEK ENDING MAY 30, 2026
PACKER MARGIN (\$/HEAD (\$291.79) LAST WEEK (\$346.98) MONTH AGO (\$245.59) YEAR AGO (\$255.41)
FEEDLOT MARGINS \$355.52 LAST WEEK \$228.64 MONTH AGO \$193.33 YEAR AGO \$725.51
STERLING MARKETING USES THE COMPREHENSIVE BEEF CUTOUT VALUE REPORTED BY USDA.

=====

AUGUST/OCTOBER LIVE CATTLE SPREAD – BULL SPREAD TURNING DOWN



ADMIS.com | 312.242.7000

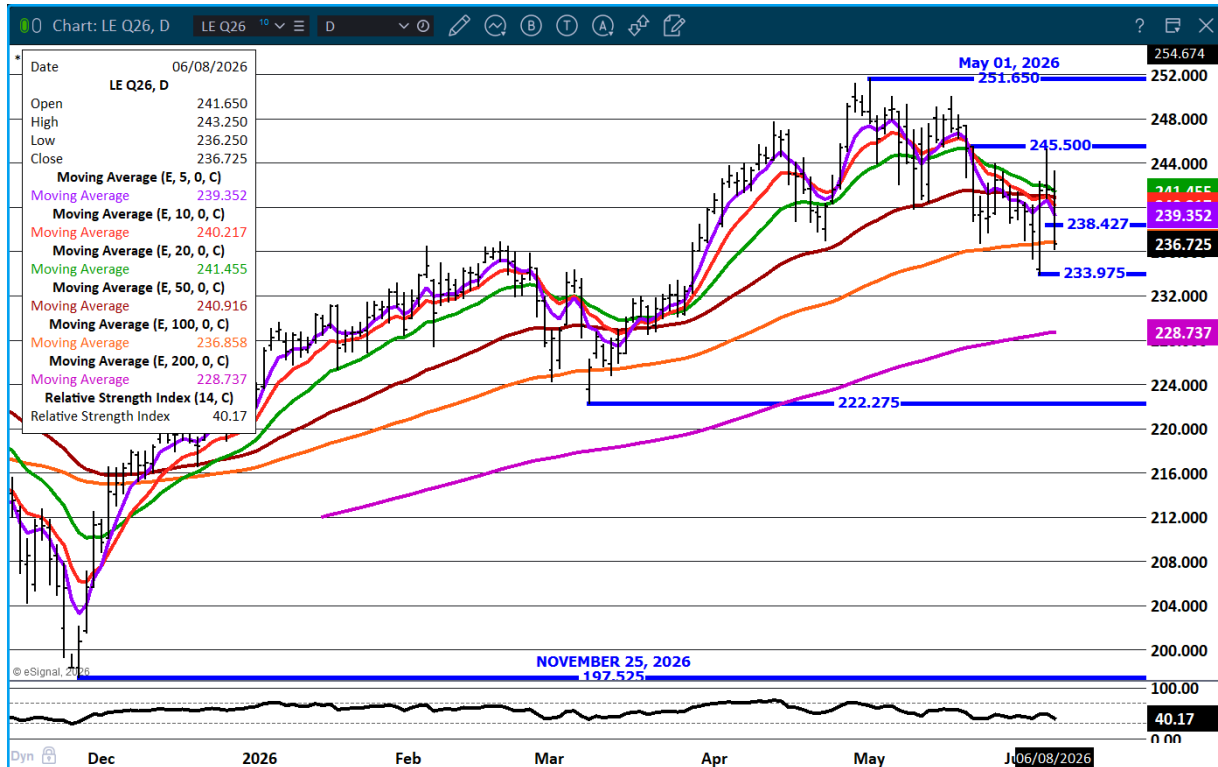
Chicago | New York | Houston | Amsterdam | London | Hong Kong | Singapore | Taipei

This material is intended to be a solicitation.

Futures and options trading involve significant risk of loss and may not be suitable for everyone. Therefore, carefully consider whether such trading is suitable for you in light of your financial condition. The opinions and viewpoints expressed herein are limited to that of the individual author(s) as of a specified date. They are subject to change based on market conditions or other considerations. They do not constitute individualized recommendations or take into account the financial considerations or trading objectives of individual customers. This publication is intended to assist in your analysis and evaluation of the futures and options markets. However, any decisions to buy, sell or hold a futures or options position are entirely your own and should not in any way deemed to be endorsed by ADM Investor Services, Inc. ("ADMIS"). Transactions in options carry a high degree of risk. Purchasers and seller of options should familiarize themselves with the type of option (i.e., put or call) which they contemplate trading and the associated risks. You should calculate the extent to which the value of the options must increase for your position to become profitable, taking into account the premium and all transaction costs. Spread strategies using combinations of positions, such as spread and straddle positions may be as risky as taking a simple long or short position. Actual results or performance may vary from those expressed or implied herein. Past performance does not guarantee future results. The information and comments contained herein are provided by ADM Investor Services, Inc. ("ADMIS") and NOT ADM. Any reproduction or retransmission of this report without the express written consent of ADMIS is strictly prohibited.

Copyright © ADM Investor Services, Inc.

AUGUST LIVE CATTLE – SUPPORT AT 100 DAY AVERAGE TO 228.75 RESISTANCE AT 241.50



=====

FEEDER CATTLE

CME FEEDER INDEX ON 06/05/2026 WAS \$ 367.01 UP 5.63 FROM PREVIOUS DAY

AUGUST 2026 FEEDER CATTLE SETTLED ON JUNE 08 2026 AT \$350.70

AUGUST FEEDER CATTLE ARE \$16.31 UNDER THE CME FEEDER INDEX AS JUNE 08, 2026.

=====

LAST WEEK FEEDER CATTLE WERE PRICED DEPENDING ON THE AREA. THERE WERE FEEDERS \$5.00 HIGHER WITH HEAVY FEEDERS UP TO \$10.00 HIGHER. OTHER AREAS OF THE COUNTRY DOWN \$10..

STATES ARE BANNING CATTLE AND LIVESTOCK FROM STATES WITH NWS. CANADA HAS BANNED CATTLE FROM TEXAS. DON'T BE SURPRISED TO HAVE COUNTRIES BAN BEEF.

CURRENTLY, FEEDER CATTLE ARE BULL SPREAD. FEEDER FUTURES WERE LOWER MONDAY BUT BULL SPREADS CONTINUED TO WIDEN OUT.

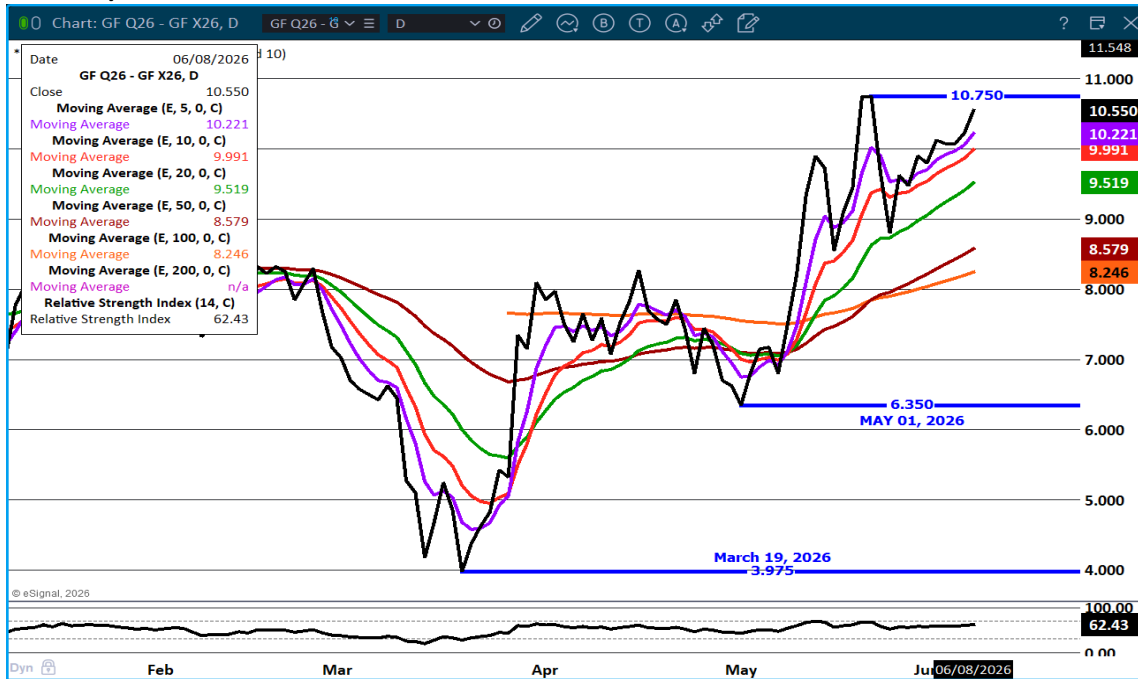
ADMIS.com | 312.242.7000

Chicago | New York | Houston | Amsterdam | London | Hong Kong | Singapore | Taipei

This material is intended to be a solicitation.

Futures and options trading involve significant risk of loss and may not be suitable for everyone. Therefore, carefully consider whether such trading is suitable for you in light of your financial condition. The opinions and viewpoints expressed herein are limited to that of the individual author(s) as of a specified date. They are subject to change based on market conditions or other considerations. They do not constitute individualized recommendations or take into account the financial considerations or trading objectives of individual customers. This publication is intended to assist in your analysis and evaluation of the futures and options markets. However, any decisions to buy, sell or hold a futures or options position are entirely your own and should not in any way be deemed to be endorsed by ADM Investor Services, Inc. ("ADMIS"). Transactions in options carry a high degree of risk. Purchasers and seller of options should familiarize themselves with the type of option (i.e., put or call) which they contemplate trading and the associated risks. You should calculate the extent to which the value of the options must increase for your position to become profitable, taking into account the premium and all transaction costs. Spread strategies using combinations of positions, such as spread and straddle positions may be as risky as taking a simple long or short position. Actual results or performance may vary from those expressed or implied herein. Past performance does not guarantee future results. The information and comments contained herein are provided by ADM Investor Services, Inc. ("ADMIS") and NOT ADM. Any reproduction or retransmission of this report without the express written consent of ADMIS is strictly prohibited.

AUGUST/NOVEMBER FEEDER CATTLE SPREAD - BULL SPREAD WIDENING



AUGUST FEEDER CATTLE – SUPPORT 336.50 RESISTANCE AT 357.70



ADMIS.com | 312.242.7000

Chicago | New York | Houston | Amsterdam | London | Hong Kong | Singapore | Taipei

This material is intended to be a solicitation.

Futures and options trading involve significant risk of loss and may not be suitable for everyone. Therefore, carefully consider whether such trading is suitable for you in light of your financial condition. The opinions and viewpoints expressed herein are limited to that of the individual author(s) as of a specified date. They are subject to change based on market conditions or other considerations. They do not constitute individualized recommendations or take into account the financial considerations or trading objectives of individual customers. This publication is intended to assist in your analysis and evaluation of the futures and options markets. However, any decisions to buy, sell or hold a futures or options position are entirely your own and should not in any way be deemed to be endorsed by ADM Investor Services, Inc. ("ADMIS"). Transactions in options carry a high degree of risk. Purchasers and seller of options should familiarize themselves with the type of option (i.e., put or call) which they contemplate trading and the associated risks. You should calculate the extent to which the value of the options must increase for your position to become profitable, taking into account the premium and all transaction costs. Spread strategies using combinations of positions, such as spread and straddle positions may be as risky as taking a simple long or short position. Actual results or performance may vary from those expressed or implied herein. Past performance does not guarantee future results. The information and comments contained herein are provided by ADM Investor Services, Inc. ("ADMIS") and NOT ADM. Any reproduction or retransmission of this report without the express written consent of ADMIS is strictly prohibited.

HOGS

UPDATE WEEK ENDING JUNE 6, 2026 ** 2,422,000 ** PREVIOUS 2,428,000

JUNE 08, 2026	470,000
WEEK AGO	471,000
YEAR AGO	476,821
2026 YEAR TO DATE	55,491,582
2025 YEAR TO DATE	55,846,844
PERCENT CHANGE YEAR TO DATE	MINUS 0.6% YTD

[HTTPS://WWW.AMS.USDA.GOV/MNREPORTS/AMS_3208.PDF](https://www.ams.usda.gov/mnreports/ams_3208.pdf)

=====

UPDATE FOR WEEK ENDING JUNE 06, 2026 HOG SLAUGHTER WAS 2,422,000 UP 284,000 HEAD COMPARED TO LAST WEEK AND COMPARED TO THE SAME PERIOD A YEAR AGO UP 69,093 HEAD. YEAR TO DATE CATTLE SLAUGHTER WAS DOWN 348,441 HEAD

=====

CME LEAN HOG INDEX ON 06/04/2026 WAS 92.60 UP .09 FROM PREVIOUS DAY

CME PORK CUTOUT INDEX ON 06/05/2026 WAS 99.69 UP .34 FROM PREVIOUS DAY

THE CME LEAN HOG INDEX IS MINUS 7.09 THE CME PORK INDEX 06/08/2026.

JUNE 2026 LEAN HOGS SETTLED ON 06/05/2026 \$94.02

JUNE 2026 LEAN HOG FUTURES ARE \$1.42 OVER THE CME LEAN HOG INDEX JUNE 08, 2026

=====

YEAR TO DATE HOG SLAUGHTER IS DOWN 0.6% WITH PRODUCTION UP 0.3%. WEIGHTS DID NOT CHANGE LAST WEEK FROM PREVIOUS WEEK. HOGS ARE CURRENT. PACKERS ARE KILLING WHAT THEY NEED TO FILL CONTRACTED PORK ORDERS AND PORK NEEDED FOR DAILY SALES. NO EXTRA AND NO LESS.

=====

TRADE VOLUME LAST THE WEEK WAS JUST MODERATE. JUNE LEAN HOGS WERE HIGHER AS THE CME LEAN HOG INDEX AND FUTURES MOVED CLOSER TO CONVERGENCE WITH NEXT WEEK EXPIRATION. FROM JULY ON OUT, SPREAD TRADERS WERE TAKING PROFITS ON SPREADS.

OVER THE WEEK HAMS AND BELLIES WERE GOOD GAINERS WHILE BUTTS AND RIBS WERE LOSERS. LOINS AND PICNICS CHANGED LITTLE.

ADMIS.com | 312.242.7000

Chicago | New York | Houston | Amsterdam | London | Hong Kong | Singapore | Taipei

This material is intended to be a solicitation.

Futures and options trading involve significant risk of loss and may not be suitable for everyone. Therefore, carefully consider whether such trading is suitable for you in light of your financial condition. The opinions and viewpoints expressed herein are limited to that of the individual author(s) as of a specified date. They are subject to change based on market conditions or other considerations. They do not constitute individualized recommendations or take into account the financial considerations or trading objectives of individual customers. This publication is intended to assist in your analysis and evaluation of the futures and options markets. However, any decisions to buy, sell or hold a futures or options position are entirely your own and should not in any way deemed to be endorsed by ADM Investor Services, Inc. ("ADMIS"). Transactions in options carry a high degree of risk. Purchasers and seller of options should familiarize themselves with the type of option (i.e., put or call) which they contemplate trading and the associated risks. You should calculate the extent to which the value of the options must increase for your position to become profitable, taking into account the premium and all transaction costs. Spread strategies using combinations of positions, such as spread and straddle positions may be as risky as taking a simple long or short position. Actual results or performance may vary from those expressed or implied herein. Past performance does not guarantee future results. The information and comments contained herein are provided by ADM Investor Services, Inc. ("ADMIS") and NOT ADM. Any reproduction or retransmission of this report without the express written consent of ADMIS is strictly prohibited.

Copyright © ADM Investor Services, Inc.

=====

ESTIMATED WEEKLY PORK PRODUCTION UNDER FEDERAL INSPECTION JUNE 06, 2026

FOR WEEK ENDING JUNE 06, 2026 HOG WEIGHTS WERE 292 UNCHANGED FROM PREVIOUS WEEK AND UP 3 POUND A YEAR AGO.

PRODUCTION WAS UP 13.6% COMPARED TO THE PREVIOUS WEEK AND UP 4.9% COMPARED TO SAME PERIOD A YEAR AGO. YEAR TO DATE PRODUCTION WAS UP 0.3%

=====

EXPORTS - WEEK ENDING MAY 29, 2026

PORK EXPORT SALES FOR WEEK ENDING MAY 29TH WERE 38,900 MT COMPARED TO LAST WEEK AT 32,900 MT UP 18% FROM A WEEK AGO AND UP 31% ON THE 4 WEEK AVERAGE MEXICO TOOK 20,400 MT COMPARED TO LAST WEEK AT 19,500 MT. CHINA TOOK 9,200 MT

=====

NATIONAL DAILY PORK REPORT FOB PLANT - NEGOTIATED SALES

LOADS PORK CUTS : 256.62

LOADS TRIM/PROCESS PORK : 32.93

2:00 PM	LOADS	CARCASS	LOIN	BUTT	PIC	RIB	HAM	BELLY
06/08/2026	289.55	98.46	94.94	133.25	77.31	180.03	87.03	118.17
CHANGE:		-2.72	-4.45	-13.58	-6.29	1.24	0.40	2.51
FIVE DAY AVERAGE		99.37	94.86	142.34	77.99	178.81	86.60	117.60

2:00 PM	LOADS	CARCASS	LOIN	BUTT	PIC	RIB	HAM	BELLY
06/05/2026	301.43	101.18	99.39	146.83	83.60	178.79	86.63	115.66
CHANGE:		3.05	7.39	7.26	6.79	4.79	0.53	-4.02
FIVE DAY AVERAGE		99.63	95.02	145.45	78.84	179.29	86.25	116.72

=====

PLANT DELIVERED PURCHASES JUNE 8, 2026 - NATIONAL NEGOTIATED PRICE

HEAD COUNT 1,710

LOWEST BASE PRICE 87.00

HIGHEST PRICE 98.50

WEIGHTED AVERAGE 96.11

CHANGE FROM PREVIOUS DAY 2.26

OTHER MARKET FORMULA (CARCASS)

HEAD COUNT: 24,481

LOWEST BASE PRIC 81.38

ADMIS.com | 312.242.7000

Chicago | New York | Houston | Amsterdam | London | Hong Kong | Singapore | Taipei

This material is intended to be a solicitation.

Futures and options trading involve significant risk of loss and may not be suitable for everyone. Therefore, carefully consider whether such trading is suitable for you in light of your financial condition. The opinions and viewpoints expressed herein are limited to that of the individual author(s) as of a specified date. They are subject to change based on market conditions or other considerations. They do not constitute individualized recommendations or take into account the financial considerations or trading objectives of individual customers. This publication is intended to assist in your analysis and evaluation of the futures and options markets. However, any decisions to buy, sell or hold a futures or options position are entirely your own and should not in any way deemed to be endorsed by ADM Investor Services, Inc. ("ADMIS"). Transactions in options carry a high degree of risk. Purchasers and seller of options should familiarize themselves with the type of option (i.e., put or call) which they contemplate trading and the associated risks. You should calculate the extent to which the value of the options must increase for your position to become profitable, taking into account the premium and all transaction costs. Spread strategies using combinations of positions, such as spread and straddle positions may be as risky as taking a simple long or short position. Actual results or performance may vary from those expressed or implied herein. Past performance does not guarantee future results. The information and comments contained herein are provided by ADM Investor Services, Inc. ("ADMIS") and NOT ADM. Any reproduction or retransmission of this report without the express written consent of ADMIS is strictly prohibited. Copyright © ADM Investor Services, Inc.

HIGHEST BASE PRICE 105.42
WEIGHTED AVERAGE PRICE 92.85

SWINE/PORK MARKET FORMULA (CARCASS)

HEAD COUNT 143,587
LOWEST BASE PRICE: 82.63
HIGHEST BASE PRICE 100.00
WEIGHTED AVERAGE PRICE 91.47

OTHER PURCHASE ARRANGEMENT (CARCASS)

HEAD COUNT: 293,444
LOWEST BASE PRICE 81.87
HIGHEST BASE PRICE 109.82
WEIGHTED AVERAGE PRICE 90.73

=====

NATIONAL DAILY DIRECT HOG PRIOR DAY REPORT - SLAUGHTERED SWINE
[HTTPS://WWW.AMS.USDA.GOV/MNREPORTS/AMS_2511.PDF](https://www.ams.usda.gov/mnreports/ams_2511.pdf)
SLAUGHTER DATA FOR FRIDAY, JUNE 5, 2026 AND SATURDAY, JUNE 6, 2026

PRODUCER SOLD:

HEAD COUNT 252,175
AVERAGE LIVE WEIGHT 289.29
AVERAGE CARCASS WEIGHT 217.49

PACKER SOLD:

HEAD COUNT 36,624
AVERAGE LIVE 291.52
AVERAGE CARCASS WEIGHT 220.07

PACKER OWNED:

HEAD COUNT 199,316
AVERAGE 293.07
AVERAGE CARCASS 221.87

=====

ADMIS.com | 312.242.7000

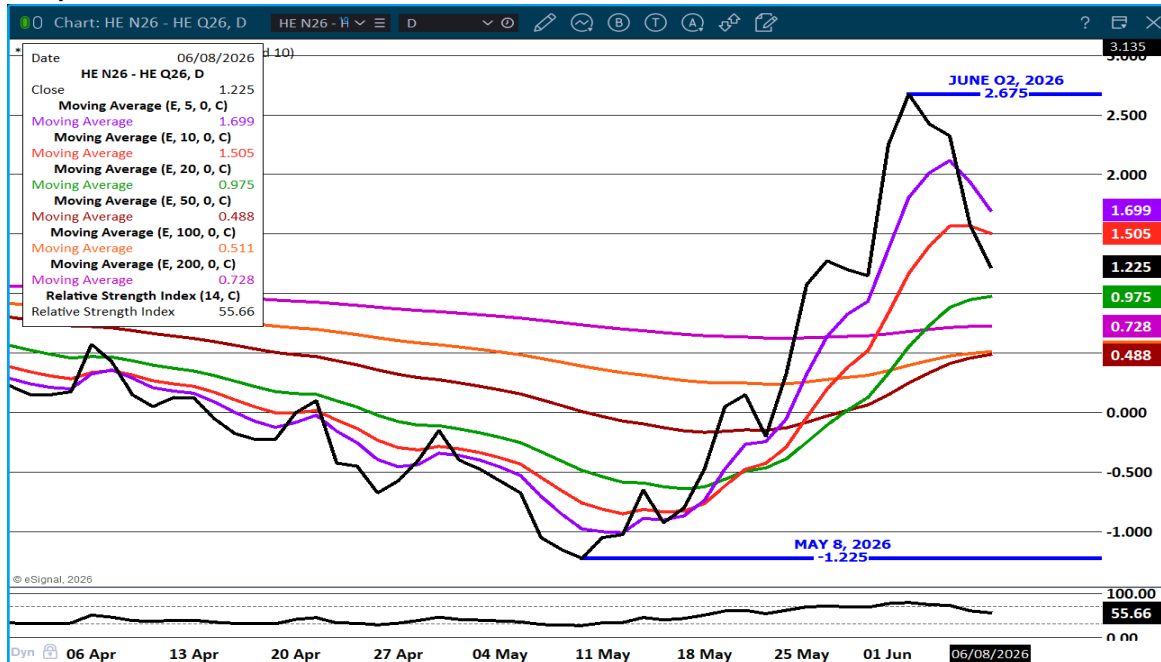
Chicago | New York | Houston | Amsterdam | London | Hong Kong | Singapore | Taipei

This material is intended to be a solicitation.

Futures and options trading involve significant risk of loss and may not be suitable for everyone. Therefore, carefully consider whether such trading is suitable for you in light of your financial condition. The opinions and viewpoints expressed herein are limited to that of the individual author(s) as of a specified date. They are subject to change based on market conditions or other considerations. They do not constitute individualized recommendations or take into account the financial considerations or trading objectives of individual customers. This publication is intended to assist in your analysis and evaluation of the futures and options markets. However, any decisions to buy, sell or hold a futures or options position are entirely your own and should not in any way deemed to be endorsed by ADM Investor Services, Inc. ("ADMIS"). Transactions in options carry a high degree of risk. Purchasers and seller of options should familiarize themselves with the type of option (i.e., put or call) which they contemplate trading and the associated risks. You should calculate the extent to which the value of the options must increase for your position to become profitable, taking into account the premium and all transaction costs. Spread strategies using combinations of positions, such as spread and straddle positions may be as risky as taking a simple long or short position. Actual results or performance may vary from those expressed or implied herein. Past performance does not guarantee future results. The information and comments contained herein are provided by ADM Investor Services, Inc. ("ADMIS") and NOT ADM. Any reproduction or retransmission of this report without the express written consent of ADMIS is strictly prohibited.

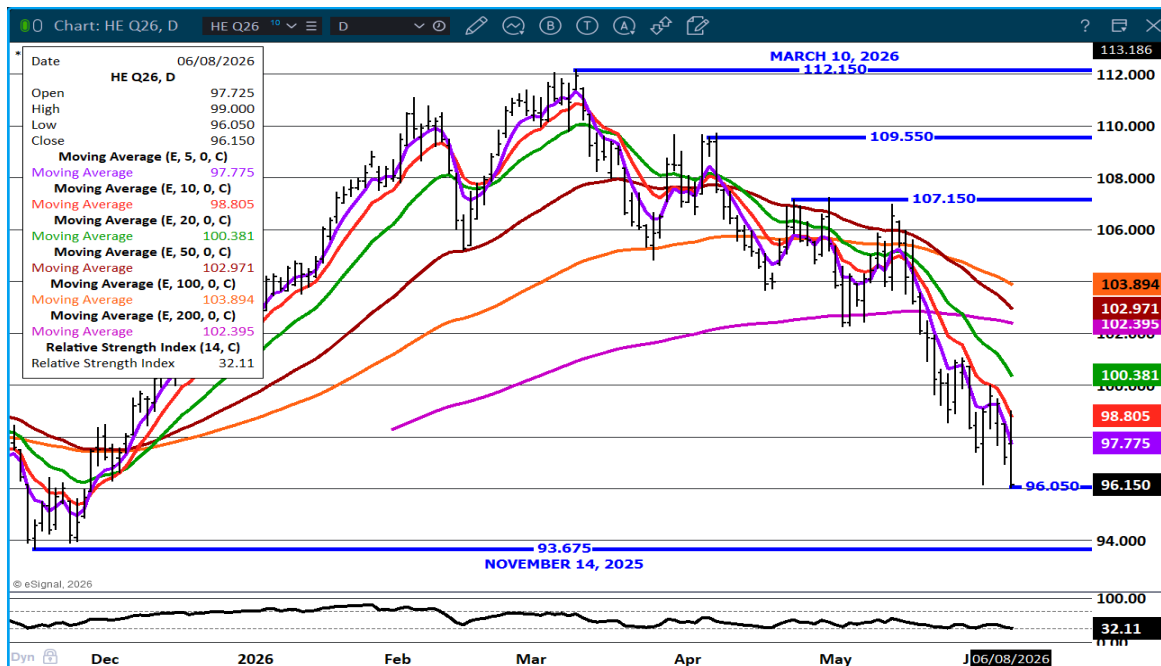
Copyright © ADM Investor Services, Inc.

JULY/AUGUST HOG SPREAD - BULL SPREAD TURNING DOWN



AUGUST LEAN HOG –

NEXT SUPPORT AT 93.67 RSI AT 32 NOT OVERSOLD BUT BOUNCE LIKELY RESISTANCE AT 98.80



ALL CHARTS PROVIDED BY ESIGNAL INTERACTIVE

ADMIS.com | 312.242.7000

Chicago | New York | Houston | Amsterdam | London | Hong Kong | Singapore | Taipei

This material is intended to be a solicitation.

Futures and options trading involve significant risk of loss and may not be suitable for everyone. Therefore, carefully consider whether such trading is suitable for you in light of your financial condition. The opinions and viewpoints expressed herein are limited to that of the individual author(s) as of a specified date. They are subject to change based on market conditions or other considerations. They do not constitute individualized recommendations or take into account the financial considerations or trading objectives of individual customers. This publication is intended to assist in your analysis and evaluation of the futures and options markets. However, any decisions to buy, sell or hold a futures or options position are entirely your own and should not in any way be deemed to be endorsed by ADM Investor Services, Inc. ("ADMIS"). Transactions in options carry a high degree of risk. Purchasers and seller of options should familiarize themselves with the type of option (i.e., put or call) which they contemplate trading and the associated risks. You should calculate the extent to which the value of the options must increase for your position to become profitable, taking into account the premium and all transaction costs. Spread strategies using combinations of positions, such as spread and straddle positions may be as risky as taking a simple long or short position. Actual results or performance may vary from those expressed or implied herein. Past performance does not guarantee future results. The information and comments contained herein are provided by ADM Investor Services, Inc. ("ADMIS") and NOT ADM. Any reproduction or retransmission of this report without the express written consent of ADMIS is strictly prohibited.