



Morning July 21, 2020 Livestock Report

by Chris Lehner | 312.242.7942 | chris.lehner@admis.com

CATTLE

USDA FEDERAL SLAUGHTER

JULY 20, 2020	117,000
WEEK AGO	115,000
YEAR AGO	115,000

=====

	CHOICE	SELECT
BOXED BEEF FINAL	201.74	191.59
CHANGE FROM PRIOR DAY	1.27	1.28
CHOICE/SELECT SPREAD:		10.15
TOTAL LOAD COUNT		110
5 DAY SIMPLE AVERAGE:	201.24	191.14

=====

FINAL JULY 29, 2020	CHOICE	SELECT
Primal Rib	328.24	291.20
Primal Chuck	165.31	159.14
Primal Round	166.11	165.73
Primal Loin	269.05	251.86
Primal Brisket	160.40	154.76
Primal Short Plate	130.17	130.17
Primal Flank	116.34	113.85

FINAL JULY 17, 2020	CHOICE	SELECT
Primal Rib	326.48	297.74
Primal Chuck	161.77	156.30
Primal Round	165.68	165.18
Primal Loin	269.53	247.20
Primal Brisket	160.06	155.04
Primal Short Plate	129.93	129.93
Primal Flank	116.55	111.92



LOAD COUNT AND CUTOFF VALUE SUMMARY FOR PRIOR 5 DAYS

Date	Choice	Select	Trim	Grinds	Total	CHOICE 600-900	SELECT 600-900
07/17	72	19	42	11	144	200.47	190.31
07/16	103	28	12	30	172	200.80	191.30
07/15	89	35	10	17	151	200.76	191.37
07/14	69	35	15	28	147	200.92	190.85
07/13	61	32	14	11	119	203.26	191.88

NATIONAL BOXED BEEF CUTS - NEGOTIATED SALES FOB Plant basis negotiated sales for delivery within 0-21-day period. Prior days sales after 1:30pm are included.
CURRENT VOLUME - (one load equals 40,000 pounds)

Choice Cuts 70.42 loads 2,816,911 pounds
 Select Cuts 19.88 loads 795,327 pounds
 Trimmings 6.89 loads 275,769 pounds
 Ground Beef 12.60 loads 503,864 pounds

USDA BY-PRODUCT DROP VALUE (STEER) FOB CENTRAL U.S.
[HTTPS://WWW.AMS.USDA.GOV/MNREPORTS/NW_LS441.TXT](https://www.ams.usda.gov/mnreports/nw_ls441.txt)

JULY 2020 LIVESTOCK REPORTS
COLD STORAGE REPORT – WEDNESDAY, JULY 22, 2020 2:00PM US CENTRAL TIME
CATTLE ON FEED REPORT – FRIDAY, JULY 24, 2020 2:00PM US CENTRAL TIME

With packer profits at \$300, they want to kill cattle, but they aren't banging on doors to buy them. Unless boxed beef moves up, packers may pay a \$1.00 or \$2.00 more this week but with weights up and slow retail sales the plentiful supplies of cattle give packer the advantage. If Choice boxed beef breaks \$200, packers will buy cattle lower. However beef movement has been getting lighter and packers doubtful are storing but selling forward. This is positive. Beef buyers may be building supplies ahead of possible slow down.

Boxed Beef starting out higher Monday but on light movement of 110 loads. Futures down throughout the day but gave up most of the loss into the close. Technically dropped to first support and could not move lower. Spreaders buying cattle and selling hogs. Volume fairly light.

Brazil and Argentina have plants that China has stopped taking exports. Both countries will need to sell beef and pork to other countries. But exporters may be coming to US Last week beef exports stronger than usual.



USDA POSTED CATTLE PRICES ON 7/20/2020
 IA/MN – CASH NO SALES DRESSED; 157.00 - 160.00 GRID
 NE - CASH – NO CASH DRESSED 157.00 ON 57 HEAD
 KS – CASH - 95.00 ON 183 HEAD DRESSED: NO SALES
 TX/OK/NM – CASH: NO USDA POSTED SALES MONDAY
 COLORADO – CASH NO USDA POSTED SALES MONDAY

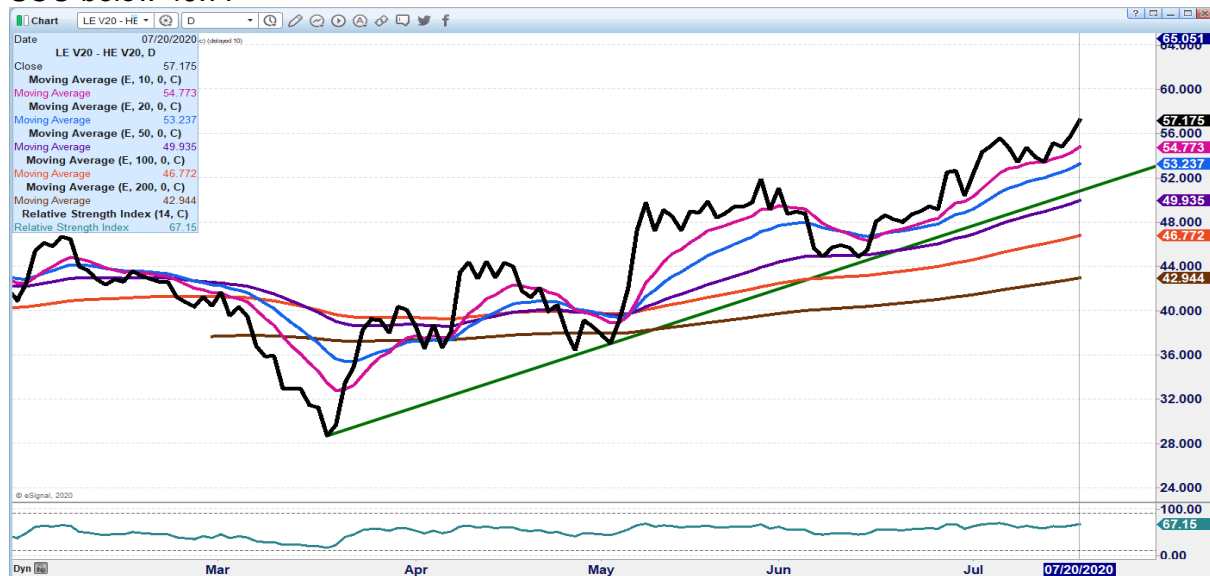
National Daily Direct Cattle July 20, 2020
 (5 day accumulated weighted avg)

	Weight	Price	Head
Live Steer:	1431	\$96.33	39,632
Live Heifer:	1321	\$95.76	13,514
Dressed Steer:	924	\$157.13	8,262
Dressed Heifer:	824	\$156.77	1,938

As of July 14th Dressed weights were 875.4 compared to previous week at 874.1 and 34 pounds above 2019 at this time. Grading percent was 82.7% compared to previous week at 82.4%.

CHARTS ARE UPDATED ON MORNING REPORTS –

OCTOBER 2020 LIVE CATTLE/OCTOBER 2020 LEAN HOGS – Cattle gaining on hogs and over next couple weeks should continue gaining. A set back to 54.77 is a place to enter with SCO below 49.77

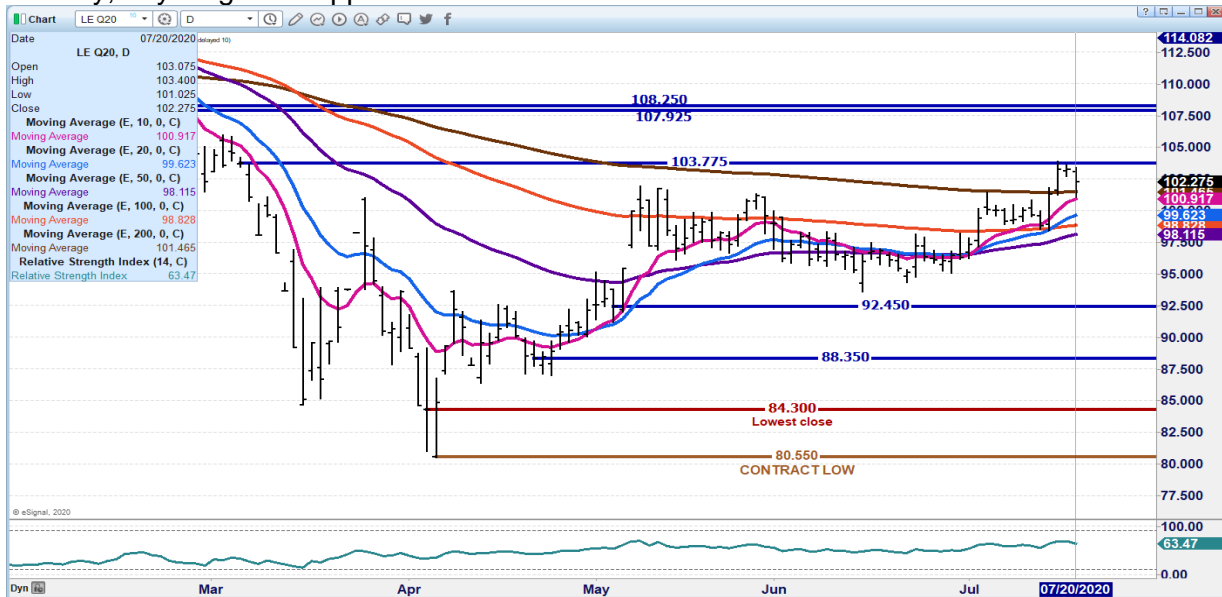




AUG 2020 LIVE CATTLE/OCT 2020 LIVE CATTLE - Spread widening is usually bearish.



AUGUST 2020 LIVE CATTLE – Dropped to 10 day moving average and moved up off of it. Tuesday first support is 100.90 to 98.10 Resistance s 103.77 to 107.92 With 3 weeks until delivery, anything can happen.



ADMIS.com | 312.242.7000 | Chicago | New York | London | Hong Kong | Singapore | Taipei | Shanghai



OCT 2020 LIVE CATTLE – Volume moderate at 23713 contracts. Tried to break but failed. Support is 104.45 to 101.65 Resistance is 108.92 to 111.75 RSI at 67 is not over bought



Feeder Cattle

THE CME FEEDER INDEX ON 07/17/2020 IS 136.31 DOWN 30 CENTS FROM PREVIOUS DAY -
AUGUST 2020 FEEDER CATTLE SETTLED AT 141.60 ON JULY 20, 2020.

NATIONAL FEEDER & STOCKER CATTLE SUMMARY – WEEK ENDING 07/17/2020

RECEIPTS:	AUCTIONS	DIRECT	VIDEO/INTERNET	TOTAL
THIS WEEK:	149,100	96,100	325,400	570,600
LAST WEEK:	134,500	73,000	NA	207,500
YEAR AGO:	149,400	59,200	217,200	425,800

COMPARED TO LAST WEEK, STEERS AND HEIFERS SOLD UNEVEN; SOUTH CENTRAL STATES FROM 3.00 TO 4.00 HIGHER WHILE THE SOUTHEAST AND NORTH CENTRAL WERE 3.00 LOWER TO 1.00 HIGHER. THERE WAS A BIG INCREASE IN NORTH CENTRAL PRICES LAST WEEK DUE TO SOME ANNUAL SPECIALS THAT BRING HIGH QUALITY REPUTATION ONE-IRON BRAND STRINGS OF CATTLE TO TOWN. PASTURE AND



RANGE CONDITIONS ARE COMING TO THE FOREFRONT AS THE NATION TRIES TO GET THROUGH THE “DOG-DAYS OF SUMMER”. FOR THE FIRST TIME THIS YEAR, OVER 50 PERCENT OF THE COUNTRY IS IN SOME SORT OF DROUGHT DESIGNATION; THE LAST TIME THAT HAS OCCURRED WAS WEEK ENDING SEPTEMBER 18, 2018 WHEN THE COUNTRY WAS COMING OFF A HISTORICAL DROUGHT.

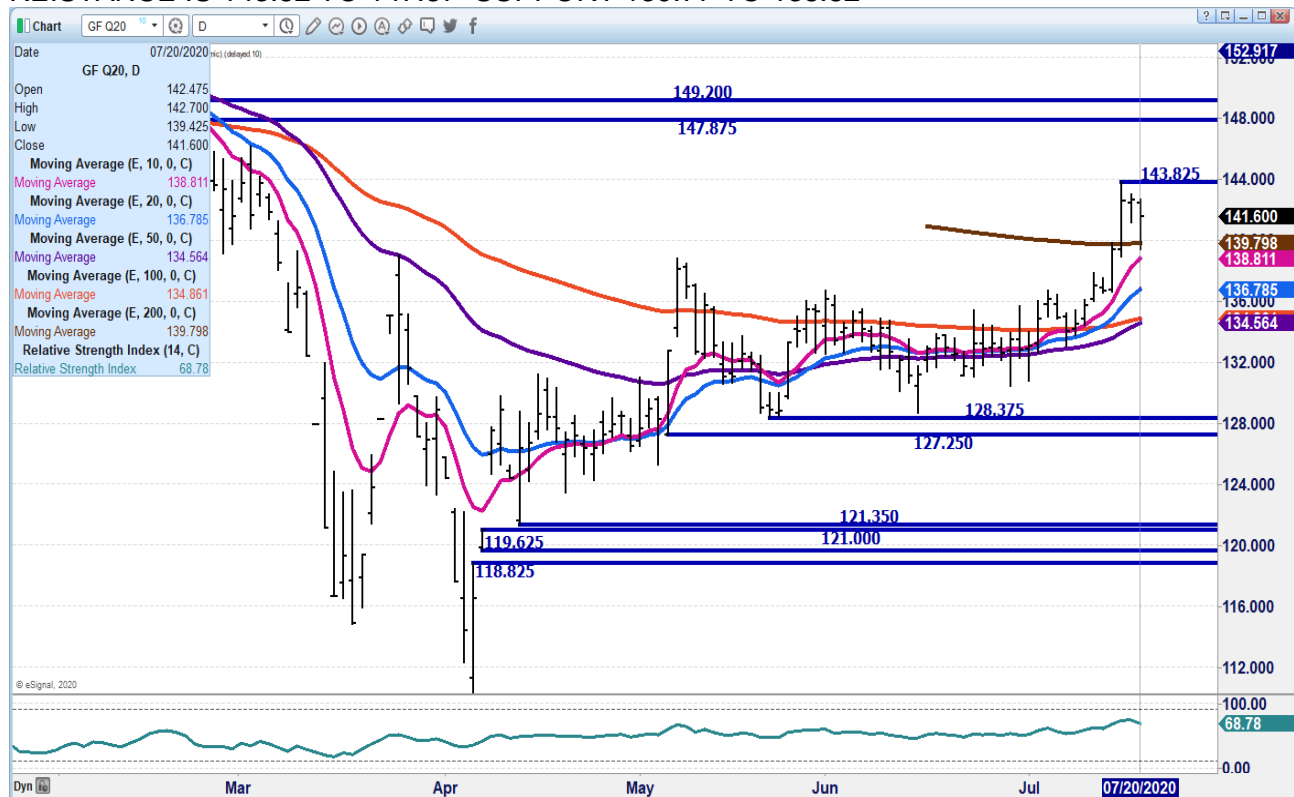
[HTTPS://WWW.AMS.USDA.GOV/MNREPORTS/SJ_LS850.TXT](https://www.ams.usda.gov/mnreports/sj_ls850.txt)

=====

CME FEEDER CATTLE INDEX IS \$5.29 UNDER AUGUST FUTURES DOWN FROM \$6.09. NORMALLY, A WIDE BASIS WITH FUTURES OVER CASH SUGGESTS SELLING FUTURES.

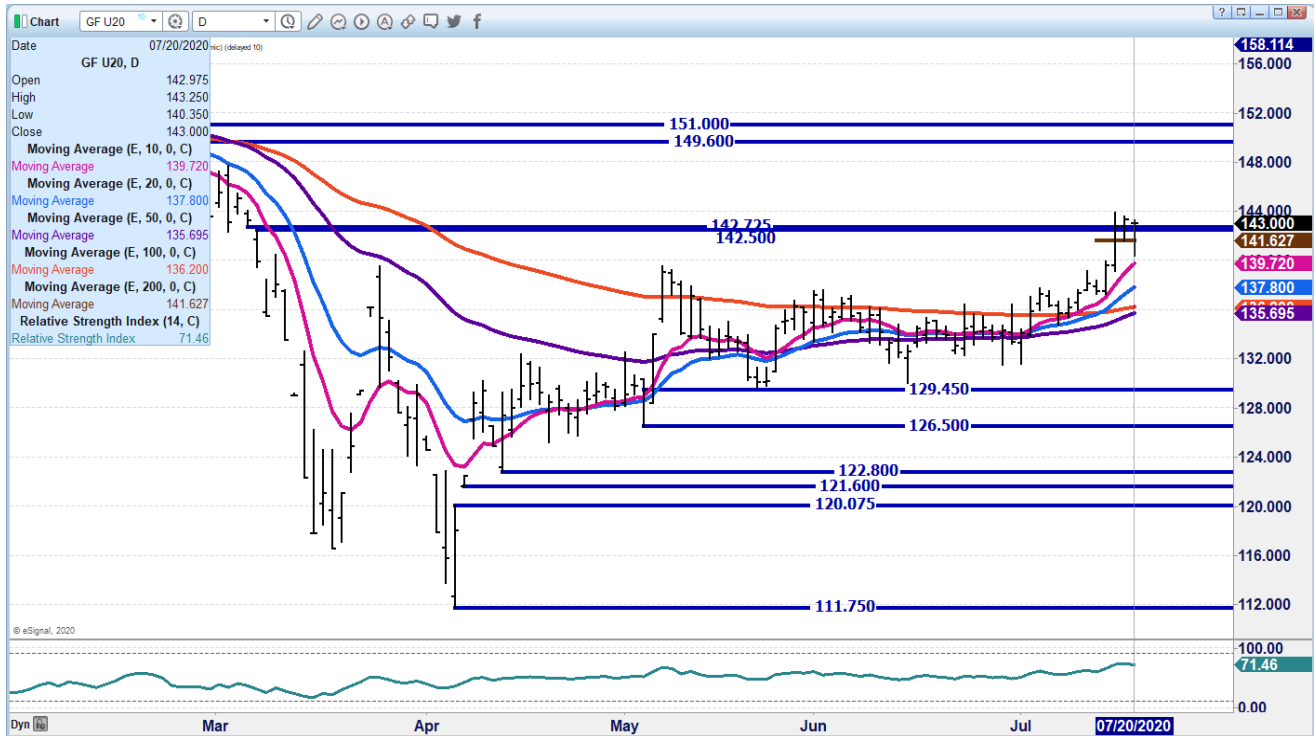
=====

AUGUST 2020 FEEDER CATTLE – FELL TO 200 DAY MOVING AVERAGE. NEXT REISTANCE IS 143.82 TO 147.87 SUPPORT 139.77 TO 138.82





SEPTEMBER 2020 FEEDER - SUPPORT AT 139.72 REISTANCE IS 146.05 TO 149.60



LEAN HOGS

USDA ESTIMATED FEDERAL HOG SLAUGHTER

JULY 20, 2020 477,000
WEEK AGO 448,000
YEAR AGO 471,000

CME CASH HOG INDEX 07/16/2020 AT 47.55 UP 6 CENTS FROM PREVIOUS DAY.
CME CASH PORK CUTOUT INDEX 07/17/2020 AT 68.22 UP 55 CENTS FROM PREVIOUS DAY.
CME CASH FRESH BACON INDEX ON 07/17/2020 WAS 132.05 COMPARED TO 07/09/2020 WAS 123.87

Moderate movement on pork on lower market with both loins and hams down. Butts up 23 cents and bellies up 3.26 higher kept carcass from dropping more but two main cuts, hams and loins down after recent move higher need to hold or pork and hogs going lower.



JULY 20, 2020 USDA MARKET NEWS

Based on negotiated prices and volume of pork cuts delivered within 14 days and on average industry cutting yields. Calculations for 215 lb Pork Carcass. 55-56% lean, 0.55"-0.70" BF Last Rib

NATIONAL DAILY PORK REPORT FOB PLANT - NEGOTIATED SALES FINAL

LOADS OF PORK CUTS: 297.60
LOADS TRIM/PROCESSED PORK : 24.28

Date	Loads	Carcass	Loin	Butt	Pic	Rib	Ham	Belly
07/20/2020	321.88	68.44	68.01	68.24	42.58	110.82	62.48	100.86
CHANGE :		-2.75	-3.24	0.23	-5.99	-5.74	-6.11	3.26
Five Day Average --		68.43	66.70	69.73	43.82	113.29	62.25	99.74

NATIONAL DAILY DIRECT HOG PRIOR DAY REPORT - SLAUGHTERED SWINE Slaughter Data for JULY 17 AND 18, 2020

Average carcass weight - 281.77
Average live weight - 212.43
https://www.ams.usda.gov/mnreports/ams_2511.pdf

DAILY DIRECT HOGS PLANT DELIVERED AS OF 1:30 PM JULY 17, 2020
NATIONAL NEGOTIATED PURCHASE BASE CARCASS PRICES
Carcass Base Price: \$29.00 - \$35.00
Weighted Average: \$31.66
Change from Prior Day: 0.13 higher
HOGS SOLD: 8,289

SWINE OR PORK MARKET FORMULA PURCHASE (Including Packer Sold)
PRICE RANGE: \$30.19 - \$66.76
Weighted Average \$48.45 PREVIOUS DAY \$45.15
HOGS SOLD: 190,123

NATIONAL NEGOTIATED LIVE HOG PURCHASE PRICE
PRICE RANGE: \$22.00 - \$27.90
Weighted Average: \$26.07
Change from Prior Day: no comparison
Hogs sold: 1,089

https://www.ams.usda.gov/mnreports/lm_hq203.txt



AUGUST 2020 LEAN HOGS – Resistance at 54.10 to 57.80 Support at 47.52 to 46.37



OCTOBER 2020 LEAN HOGS - Support at 47.00 to 46.10 Resistance is the previous three day highs today at 51.72



ADMIS.com | 312.242.7000 | Chicago | New York | London | Hong Kong | Singapore | Taipei | Shanghai

The information and comments contained herein is provided by ADM Investor Services, Inc. (“ADMIS”) and NOT ADM. Futures and options trading involve significant risk of loss and may not be suitable for everyone. Therefore, carefully consider whether such trading is suitable for you in light of your financial condition. This report includes information from sources believed to be reliable and accurate as of the date of this publication, but no independent verification has been made and we do not guarantee its accuracy or completeness. Research analyst does not currently maintain positions or have financial interest in the commodities specified within this report. Any reproduction or retransmission of this report without the express written consent of ADM Investor Services, Inc. is strictly prohibited. Again, the information and comments contained herein is provided by ADMIS and in no way should be construed to be information provided by ADM. Copyright © ADM Investor Services, Inc.



ADM Investor Services, Inc.



DECEMBER 2020 LEAN HOGS – Resistance is 52.75 Support at 48.75



CHARTS FROM ESIGNAL INTERACTIVE, INC.

Chris.Lehner@admis.com

312 242 7942

913.787.6804

ADMIS.com | 312.242.7000 | Chicago | New York | London | Hong Kong | Singapore | Taipei | Shanghai

The information and comments contained herein is provided by ADM Investor Services, Inc. ("ADMIS") and NOT ADM. Futures and options trading involve significant risk of loss and may not be suitable for everyone. Therefore, carefully consider whether such trading is suitable for you in light of your financial condition. This report includes information from sources believed to be reliable and accurate as of the date of this publication, but no independent verification has been made and we do not guarantee its accuracy or completeness. Research analyst does not currently maintain positions or have financial interest in the commodities specified within this report. Any reproduction or retransmission of this report without the express written consent of ADM Investor Services, Inc. is strictly prohibited. Again, the information and comments contained herein is provided by ADMIS and in no way should be construed to be information provided by ADM. Copyright © ADM Investor Services, Inc.