



## Morning August 3, 2020 Livestock Report

by Chris Lehner | 312.242.7942 | [chris.lehner@admis.com](mailto:chris.lehner@admis.com)

### CATTLE

#### USDA FEDERAL SLAUGHTER

|                             |   |
|-----------------------------|---|
| JULY 31, 2020               | 113,000                                     |
| WEEK AGO                    | 113,000                                     |
| YEAR AGO                    | 115,000                                     |
| SATURDAY 08/01/2020         | 51,000 - A WEEK AGO 61,000, YEAR AGO 35,000 |
| WEEK TO DATE (EST)          | 638,000                                     |
| SAME PERIOD LAST WEEK (EST) | 646,000                                     |
| SAME PERIOD LAST YEAR (ACT) | 633,000                                     |
| 2020 YEAR TO DATE           | 18,420,000                                  |
| 2019 *YEAR TO DATE          | 19,443,000                                  |
| PERCENT CHANGE YEAR TO DATE | MINUS 5.3% A WEEK AGO MINUS 5.4%,           |

=====

|                       | CHOICE | SELECT |
|-----------------------|--------|--------|
| BOXED BEEF FINAL      | 203.26 | 189.89 |
| CHANGE FROM PRIOR DAY | 1.46   | (1.61) |
| CHOICE/SELECT SPREAD: |        | 13.37  |
| TOTAL LOAD COUNT      |        | 98     |
| 5 DAY SIMPLE AVERAGE: | 202.04 | 190.01 |

#### PREVIOUS WEEK JULY 24, 2020

|                  |        |        |
|------------------|--------|--------|
| BOXED BEEF FINAL | 201.77 | 190.63 |
|------------------|--------|--------|

#### PREVIOUS MONTH JUNE 30, 2020

|                  |        |        |
|------------------|--------|--------|
| BOXED BEEF FINAL | 206.97 | 199.90 |
|------------------|--------|--------|

=====

| FINAL JULY 31, 2020 | CHOICE | SELECT |
|---------------------|--------|--------|
| Primal Rib          | 338.16 | 292.82 |
| Primal Chuck        | 160.79 | 155.74 |
| Primal Round        | 167.04 | 167.63 |
| Primal Loin         | 277.31 | 245.90 |
| Primal Brisket      | 142.82 | 143.74 |
| Primal Short Plate  | 137.06 | 137.06 |
| Primal Flank        | 120.68 | 114.53 |



**PREVIOUS WEEK**

FINAL JULY 24, 2020

|                    | CHOICE | SELECT |
|--------------------|--------|--------|
| Primal Rib         | 328.89 | 286.39 |
| Primal Chuck       | 161.46 | 159.06 |
| Primal Round       | 167.37 | 165.92 |
| Primal Loin        | 273.58 | 249.74 |
| Primal Brisket     | 152.92 | 150.27 |
| Primal Short Plate | 132.70 | 132.70 |
| Primal Flank       | 117.65 | 115.76 |

**LOAD COUNT AND CUTOUT VALUE SUMMARY FOR PRIOR 5 DAYS**

| Date  | Choice | Select | Trim | Grinds | Total | CHOICE  | SELECT  |
|-------|--------|--------|------|--------|-------|---------|---------|
|       |        |        |      |        |       | 600-900 | 600-900 |
| 07/30 | 93     | 22     | 3    | 19     | 137   | 201.80  | 191.50  |
| 07/29 | 100    | 27     | 16   | 31     | 174   | 201.11  | 189.49  |
| 07/28 | 64     | 37     | 15   | 9      | 124   | 202.96  | 188.32  |
| 07/27 | 58     | 19     | 9    | 8      | 94    | 202.55  | 190.13  |
| 07/24 | 55     | 26     | 10   | 26     | 117   | 201.77  | 190.63  |

NATIONAL BOXED BEEF CUTS - NEGOTIATED SALES FOB Plant basis negotiated sales for delivery within 0-21-day period. Prior days sales after 1:30pm are included.

CURRENT VOLUME - (one load equals 40,000 pounds)

|             |             |                  |
|-------------|-------------|------------------|
| Choice Cuts | 51.52 loads | 2,060,770 pounds |
| Select Cuts | 20.81 loads | 832,273 pounds   |
| Trimmings   | 7.59 loads  | 303,595 pounds   |
| Ground Beef | 18.44 loads | 737,534 pounds   |

USDA BY-PRODUCT DROP VALUE (STEER) FOB CENTRAL U.S.

[HTTPS://WWW.AMS.USDA.GOV/MNREPORTS/NW\\_LS441.TXT](https://www.ams.usda.gov/mnreports/nw_LS441.txt)

This week packers will bring up their August contracted cattle.

The Dollar Index appears to have bottomed on Friday, look for strong exports next week.

Boxed Beef movement on daily cutout is light but prices are improving. Beef is being forwarded contracted ahead of the mandatory reporting time. With wide spreads in Live Cattle between August and October, October and December... as markets near October on out unless boxed



beef demand continues to gain, look for futures months from October on out to drop as beef buyers have already secured needs.

=====

USDA POSTED CATTLE PRICES ON 7/31/2020  
 IA/MN – NO CASH SALES DRESSED 160.00 - 162.00  
 NE - CASH – 99.00 - 100.00 DRESSED 160.00  
 KS – CASH – 96.00- 97.00 DRESSED: N/A  
 TX/OK/NM – NO SALES FRIDAY Majority of sales on Wednesday  
 COLORADO – 99.00 ON 190 HEAD

National Daily Direct Cattle July 31, 2020  
 (5 day accumulated weighted avg)

|                 | Weight | Price    | Head   |
|-----------------|--------|----------|--------|
| Live Steer:     | 1438   | \$98.78  | 30,769 |
| Live Heifer:    | 1290   | \$97.59  | 14,871 |
| Dressed Steer:  | 920    | \$159.50 | 21,623 |
| Dressed Heifer: | 828    | \$159.89 | 6,627  |

PREVIOUS WEEK

National Daily Direct Cattle July 24, 2020  
 (5 day accumulated weighted avg)

|                 | Weight | Price    | Head   |
|-----------------|--------|----------|--------|
| Live Steer:     | 1448   | \$97.29  | 38,734 |
| Live Heifer:    | 1310   | \$96.77  | 19,093 |
| Dressed Steer:  | 922    | \$158.07 | 24,052 |
| Dressed Heifer: | 842    | \$157.87 | 4,360  |

=====

As of July 28<sup>th</sup> Dressed weights were 878.2 compared to previous week at 878.7. Compared to a year ago weights are up 34 pounds Grading percent was 83.6% compared to previous week at 83.1%.

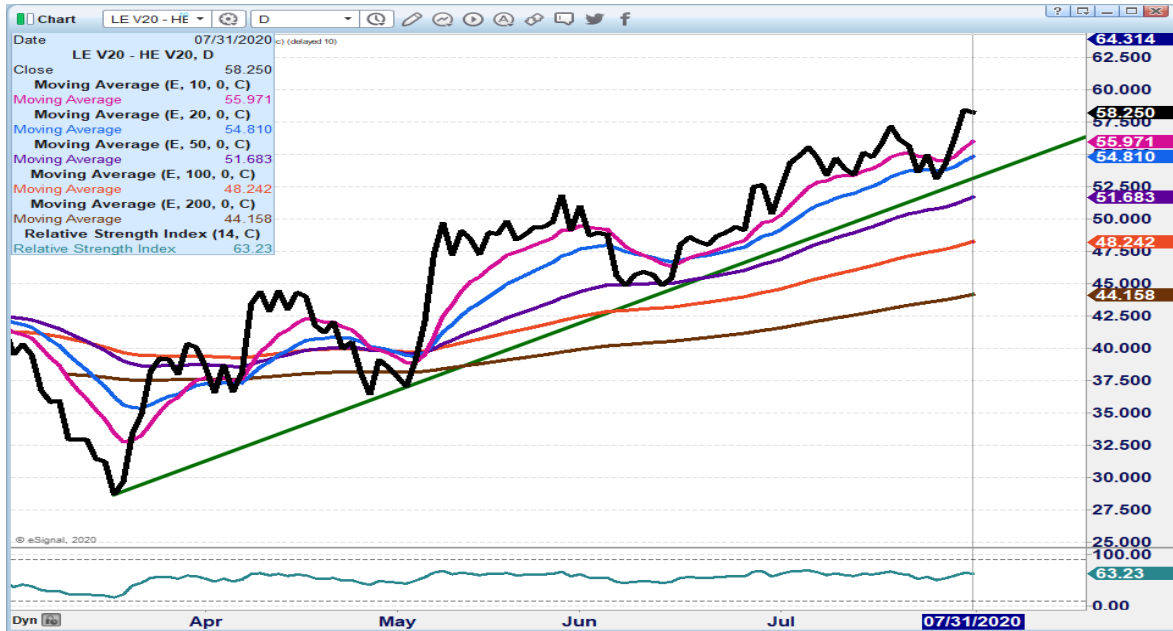
=====

*CHARTS ARE UPDATED ON MORNING REPORTS –*

OCTOBER 2020 LIVE CATTLE/OCTOBER 2020 LEAN HOGS – Look for continued strength in cattle over hogs



Daily Futures Market Commentary



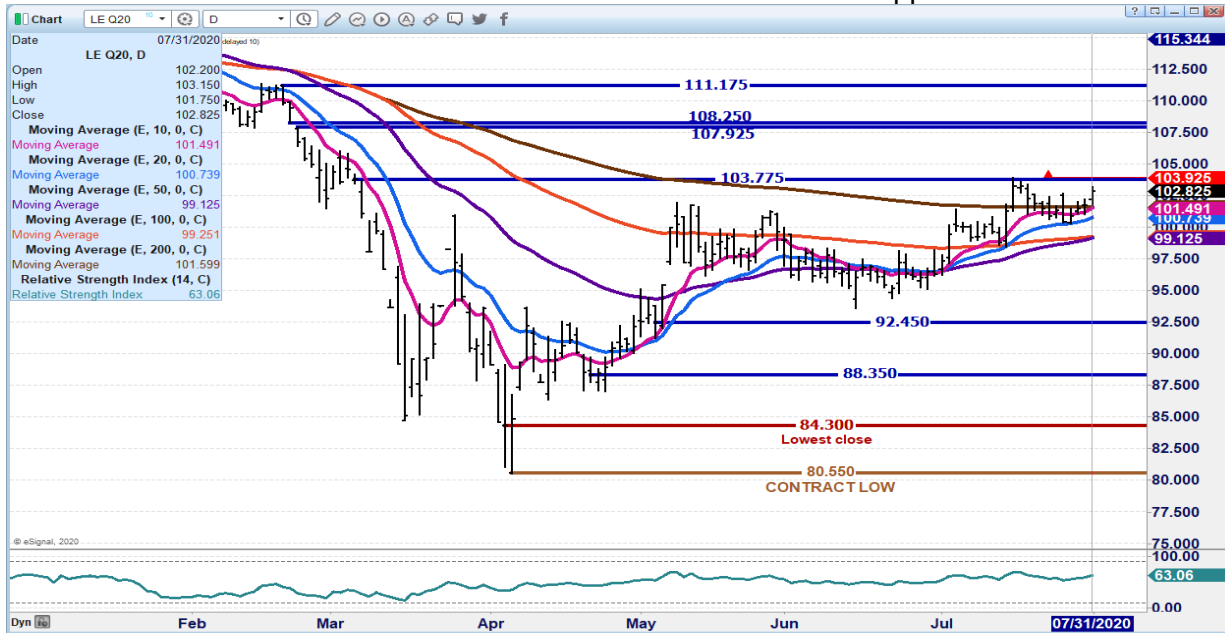
AUGUST 2020 LIVE CATTLE/OCTOBER 2020 LIVE CATTLE – Spreading out is usually not bullish for back months



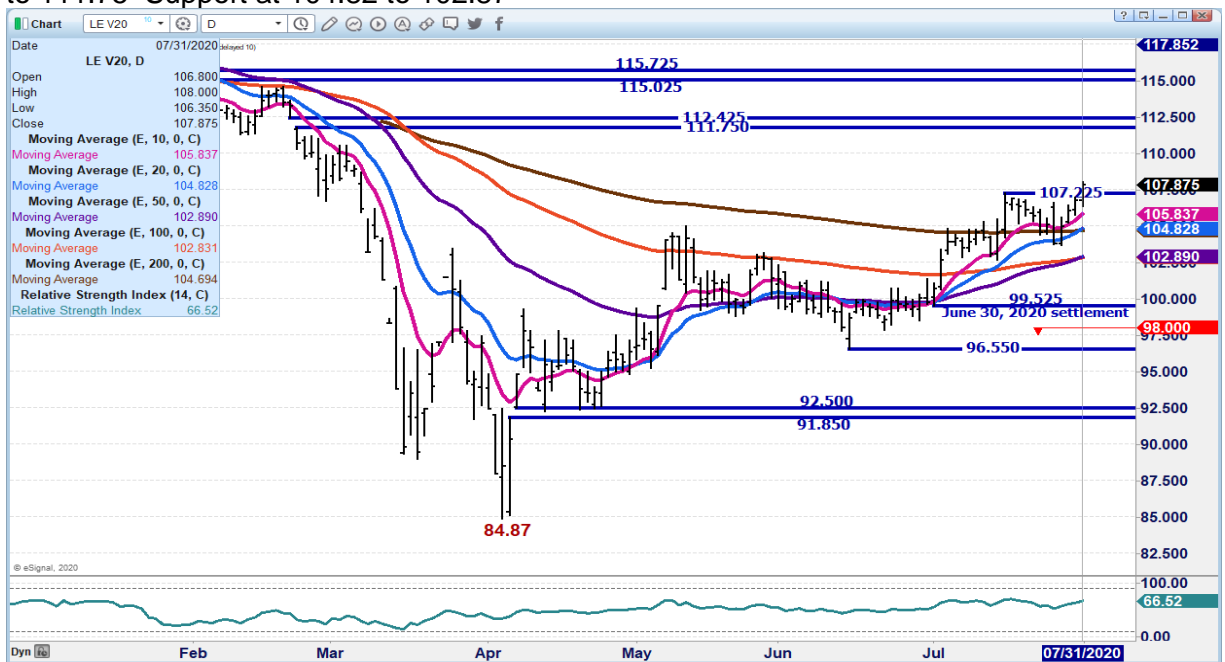




**AUGUST 2020 LIVE CATTLE – Resistance at 103.92 to 105.92 Support at 101.50 to 99.12**



**OCTOBER 2020 LIVE CATTLE – Strong close back to March levels Next resistance at 110.95 to 111.75 Support at 104.82 to 102.87**



ADMIS.com | 312.242.7000 | Chicago | New York | London | Hong Kong | Singapore | Taipei | Shanghai



## Feeder Cattle

THE CME FEEDER INDEX ON 07/30/2020 IS 138.58 DOWN 66 CENTS FROM PREVIOUS DAY

AUGUST 2020 FEEDER CATTLE SETTLED AT 144.67 ON JULY 31, 2020.

=====

### NATIONAL FEEDER & STOCKER CATTLE SUMMARY – WEEK ENDING 07/31/2020

| RECEIPTS:  | AUCTIONS | DIRECT | VIDEO/INTERNET | TOTAL   |
|------------|----------|--------|----------------|---------|
| THIS WEEK: | 136,100  | 48,500 | 400            | 185,000 |
| LAST WEEK: | 128,100  | 79,500 | 96,600         | 304,200 |
| YEAR AGO:  | 148,700  | 94,200 | 6,200          | 249,100 |

COMPARED TO LAST WEEK, STEERS AND HEIFERS ARE TRADING MOSTLY STEADY TO 4.00 HIGHER. THIS WEEK'S PRICES WERE PRETTY MUCH IN MOST CASES A REPEAT OF LAST WEEK'S MARKET TREND: WITH SOME OF THE MOST ADVANCES CONTINUE ON THE HEAVY YEARLINGS OVER 800 LBS. HIGH VOLUME SALES AT OK CITY AND EL RENO DID SEE SOME UNEVEN TO LOWER PRICES BUT ON MOSTLY PLAIN TO AVERAGE FEEDERS. SALE BARNs THROUGHOUT THE NORTHERN PLAINS CONTINUE ON THEIR SUMMERTIME SCHEDULES WITH LARGER SALES EVERY OTHER WEEK.

[HTTPS://WWW.AMS.USDA.GOV/MNREPORTS/SJ\\_LS850.TXT](https://www.ams.usda.gov/mnreports/sj_ls850.txt) FULL REPORT

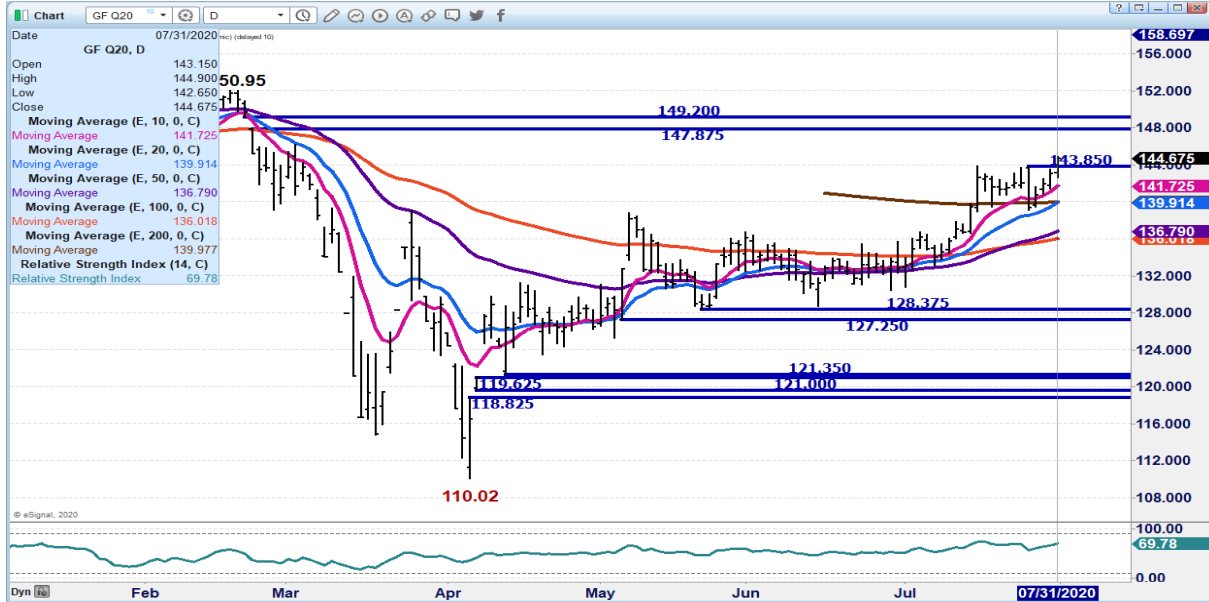
=====

FEEDER CATTLE FUTURES HAVE RALLIED BACK TO MARCH 2<sup>ND</sup> FEEDLOTS THAT FEED FOR PACKERS OR ON SOME FORM OF CONTRACT NEED TO REPLACE INVENTORY.

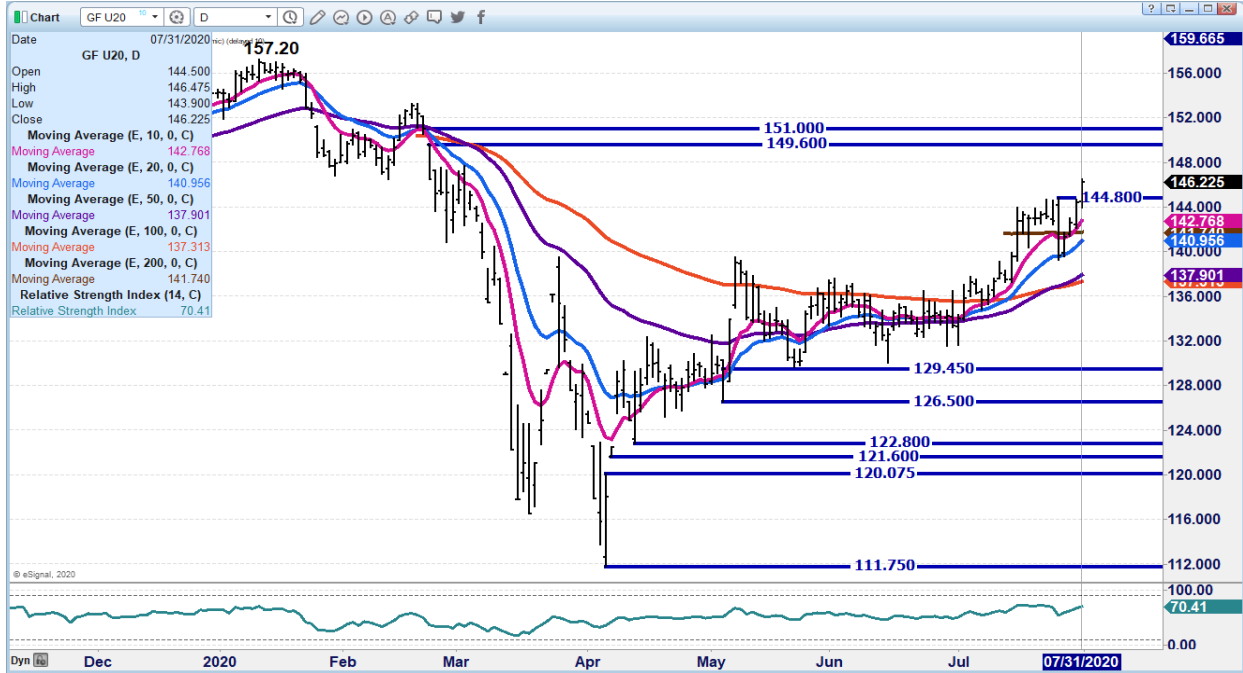
=====



**AUGUST 2020 FEEDER CATTLE – STRONG CLOSE BACK TO MARCH 3 NEXT REISTANCE 147.87 SUPPORT AT 141.72**



**SEPTEMBER 2020 FEEDER - RESISTANCE AT 147.65 SUPPORT AT 141.75**



ADMIS.com | 312.242.7000 | Chicago | New York | London | Hong Kong | Singapore | Taipei | Shanghai

The information and comments contained herein is provided by ADM Investor Services, Inc. ("ADMIS") and NOT ADM. Futures and options trading involve significant risk of loss and may not be suitable for everyone. Therefore, carefully consider whether such trading is suitable for you in light of your financial condition. This report includes information from sources believed to be reliable and accurate as of the date of this publication, but no independent verification has been made and we do not guarantee its accuracy or completeness. Research analyst does not currently maintain positions or have financial interest in the commodities specified within this report. Any reproduction or retransmission of this report without the express written consent of ADM Investor Services, Inc. is strictly prohibited. Again, the information and comments contained herein is provided by ADMIS and in no way should be construed to be information provided by ADM. Copyright © ADM Investor Services, Inc.



LEAN HOGS

USDA ESTIMATED FEDERAL HOG SLAUGHTER

|                             |            |                                      |
|-----------------------------|------------|--------------------------------------|
| JULY 31, 2020               | 475,000    |                                      |
| WEEK AGO                    | 471,000    |                                      |
| YEAR AGO                    | 471,000    |                                      |
| SATURDAY 08/01/2020         | 231,000-   | A WEEK AGO 195,000 - YEAR AGO 12,000 |
| WEEK TO DATE (EST)          | 2,589,000  |                                      |
| SAME PERIOD LAST WEEK (EST) | 2,518,000  |                                      |
| SAME PERIOD LAST YEAR (ACT) | 2,359,000  |                                      |
| 2020 YEAR TO DATE           | 72,029,000 |                                      |
| 2019 *YEAR TO DATE          | 71,592,000 |                                      |
| PERCENT CHANGE YEAR TO DATE | .6%        | COMPARED TO A WEEK AGO .3% .         |

=====

CME CASH HOG INDEX 07/29/2020 AT 53.56 UP .61 FROM PREVIOUS DAY.  
 CME CASH PORK CUTOUT INDEX 07/30/2020 AT 69.29 DOWN 46 DOWN FROM PREVIOUS DAY.

[PREVIOUS WEEK](#)

[CME CASH HOG INDEX 07/22/2020 AT 49.69 UP 27 CENTS FROM PREVIOUS DAY.](#)  
[CME CASH PORK CUTOUT INDEX 07/23/2020 AT 70.28 UP .51 CENTS FROM PREVIOUS DAY.](#)

CME CASH FRESH BACON INDEX ON 7/24/2020 WAS 130.93 COMPARED TO 07/17/2020 WAS 132.05

=====

Lean Hogs came off Thursday's lows on Friday and moved up to resistance. During July, August Lean hogs were up \$2.97, October Hogs up .27 cents, December hogs \$1.35.

=====

For the week compared to previous week pork carcass was down 5.22 and up 2.19 from June. Loin over the past week lost 5.22 and for the month were up 78 cents. Hams were down hard from a week ago off 17.79 and compared to a month ago 7.37. Bellies up 1.00 from a week ago and up 12.60 from end of June

=====

Need to watch hams. Hams could be an indicator of strength or weakness in exports.

=====





## JULY 31, 2020 USDA MARKET NEWS

Based on negotiated prices and volume of pork cuts delivered within 14 days and on average industry cutting yields. Calculations for 215 lb Pork Carcass. 55-56% lean, 0.55"-0.70" BF Last Rib

### NATIONAL DAILY PORK REPORT FOB PLANT - NEGOTIATED SALES FINAL

LOADS OF PORK CUTS: 350.86

LOADS TRIM/PROCESSED PORK : 38.16

| Date                | Loads  | Carcass | Loin  | Butt  | Pic   | Rib    | Ham   | Belly |
|---------------------|--------|---------|-------|-------|-------|--------|-------|-------|
| 07/31/2020          | 389.03 | 65.31   | 67.46 | 67.76 | 48.32 | 114.12 | 48.64 | 96.78 |
| CHANGE :            |        | -2.26   | -1.94 | -1.17 | -0.47 | -0.61  | -6.47 | 0.06  |
| Five Day Average -- |        | 69.34   | 69.24 | 69.73 | 47.42 | 114.83 | 63.11 | 95.92 |

#### PREVIOUS WEEK

| Date       | Loads  | Carcass | Loin  | Butt  | Pic   | Rib    | Ham   | Belly |
|------------|--------|---------|-------|-------|-------|--------|-------|-------|
| 07/24/2020 | 337.56 | 70.53   | 72.68 | 67.82 | 46.42 | 112.39 | 66.43 | 95.78 |

#### PREVIOUS MONTH

| Date       | Loads  | Carcass | Loin  | Butt  | Pic   | Rib    | Ham   | Belly |
|------------|--------|---------|-------|-------|-------|--------|-------|-------|
| 06/30/2020 | 439.50 | 63.12   | 66.68 | 77.72 | 45.75 | 144.25 | 41.27 | 84.18 |

### NATIONAL DAILY DIRECT HOG PRIOR DAY REPORT - SLAUGHTERED SWINE

Slaughter Data for JULY 29, 2020

Average carcass weight - 278.90

Average live weight - 209.38

[https://www.ams.usda.gov/mnreports/ams\\_2511.pdf](https://www.ams.usda.gov/mnreports/ams_2511.pdf)

### DAILY DIRECT HOGS PLANT DELIVERED AS OF 1:30 PM JULY 30, 2020

#### NATIONAL NEGOTIATED PURCHASE BASE CARCASS PRICES

Carcass Base Price: \$37.75 - \$41.80

Weighted Average: \$40.97

Change from Prior Day: 0.38 lower

HOGS SOLD: 4,968

### SWINE OR PORK MARKET FORMULA PURCHASE (Including Packer Sold)

PRICE RANGE: \$35.83 - \$64.20

Weighted Average \$51.30 PREVIOUS DAY \$53.05

HOGS SOLD: 172,201



NATIONAL NEGOTIATED LIVE HOG PURCHASE PRICE  
 PRICE RANGE: \*Price not reported due to confidentiality  
 Weighted Average: N/A  
 Change from Prior Day: N/A  
 Hogs sold: 1038

[https://www.ams.usda.gov/mnreports/lm\\_hq203.txt](https://www.ams.usda.gov/mnreports/lm_hq203.txt)

AUGUST 2020 LEAN HOGS – Resistance at 53.80 to 55.27 Support at 51.00 to contract lows and trendline now at 45.80





**OCTOBER 2020 LEAN HOGS - Resistance at 49.75 to 51.25 Support at 47.75 to 47.00**



CHARTS FROM ESIGNAL INTERACTIVE, INC.

[Chris.Lehner@admis.com](mailto:Chris.Lehner@admis.com) 312 242 7942 913.787.6804