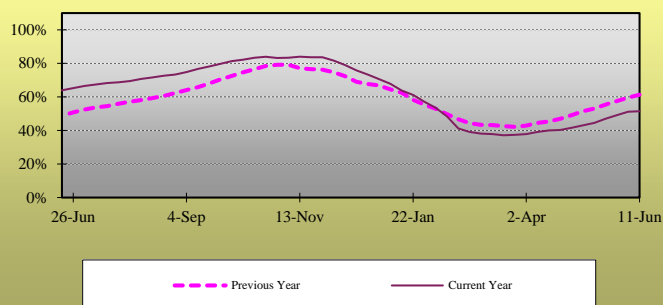


## Weekly Natural Gas Report

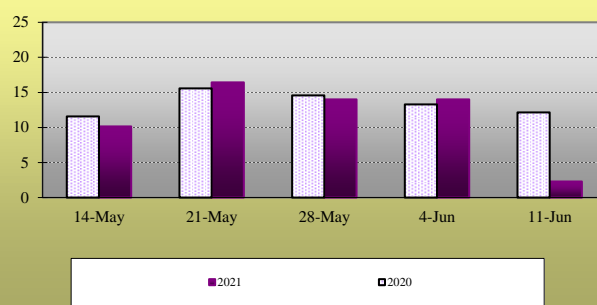
### EIA STATISTICS<sup>1</sup>

Week Ending	REPORTED GAS IN STORAGE							DAILY WITHDRAWAL/INJECTION				
	South Central <sup>2</sup>	East <sup>3</sup>	Midwest <sup>4</sup>	Mountain <sup>5</sup>	Pacific <sup>6</sup>	2021 Total	Week Change	2020 Total	Week Change	2021	Week Change	2020
21-May	931	385	499	144	256	2215	115	2612	109	16.43	0.71	15.57
28-May	959	413	522	151	268	2313	98	2714	102	14.00	(2.43)	14.57
4-Jun	983	445	547	160	276	2411	98	2807	93	14.00	0.00	13.29
11-Jun-21	995	461	570	165	236	2427	16	2892	85	2.29	(11.71)	12.14
18-Jun	----	----	----	----	----	----	----	3012	120	----	----	17.14
25-Jun	----	----	----	----	----	----	----	3077	65	----	----	9.29
2-Jul	----	----	----	----	----	----	----	3133	56	----	----	8.00

Total Working Gas Design Capacity Utilization<sup>7</sup>



Daily Withdrawal/Injection Rate



### RIG COUNTS<sup>8</sup>

Producing:	Oil	Natural Gas	Misc.	US Total	Percentage Oil	Percentage Gas
Latest Week	365	96	0	461	79.2%	20.8%
Prior Week	359	97	0	456	78.7%	21.3%
Year Ago	199	78	2	279	71.3%	28.0%

### COOLING DEGREE DAY SUMMARY<sup>9</sup>

For the week ending 12-Jun-2021

City	Latest Week	Normal	Percent of Normal
BOSTON	77	25	308.0%
NEW YORK	84	39	215.4%
WASHINGTON	95	61	155.7%
CHICAGO	104	30	346.7%
MINNEAPOLIS	132	27	488.9%
DALLAS	117	102	114.7%
OKLAHOMA CITY	89	74	120.3%
DENVER	55	24	229.2%
SEATTLE	0	1	

<sup>1</sup> Statistics as reported by the Energy Information Agency. All figures in Billions of Cubic Feet unless otherwise noted.

<sup>2</sup> South Central region includes TX, OK, KS, LA, MS and AL

<sup>3</sup> East region includes all Atlantic Coast states, including OH, PA, VT, and WV

<sup>4</sup> Midwest region includes MN, IA, MO, WI, IL, MI, IN, KY and TN

<sup>5</sup> Mountain region includes ID, NV, MT, WY, UT, AZ, ND, SD, NE, CO, and NM

<sup>6</sup> Pacific region includes WA, OR, and CA

<sup>7</sup> Reported Gas in Storage as a percentage of Working Gas Design Capacity. For explanation of Working Gas Design Capacity see: [www.eia.gov/naturalgas/storagecapacity/](http://www.eia.gov/naturalgas/storagecapacity/)

<sup>8</sup> As Reported By Baker-Hughes. Miscellaneous includes wells drilling for both Oil and Gas.

<sup>9</sup> Heating Degree Days given during winter months, Cooling Degree Days over Summer months. Changeover is as appropriate.