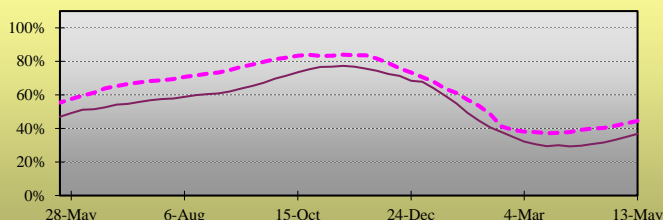


## Weekly Natural Gas Report

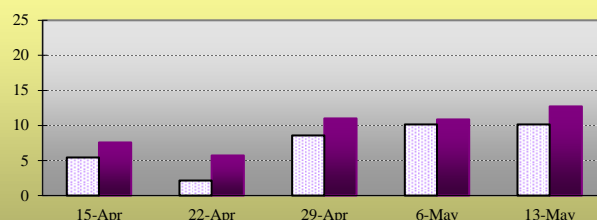
### EIA STATISTICS<sup>1</sup>

Week Ending	REPORTED GAS IN STORAGE						DAILY WITHDRAWAL/INJECTION					
	South Central <sup>2</sup>	East <sup>3</sup>	Midwest <sup>4</sup>	Mountain <sup>5</sup>	Pacific <sup>6</sup>	2022 Total	Week Change	2021 Total	Week Change	2022	Week Change	2021
22-Apr	681	238	309	90	171	1490	40	1898	15	5.71	(1.86)	2.14
29-Apr	721	253	324	92	176	1567	77	1958	60	11.00	5.29	8.57
6-May	749	274	342	96	183	1643	76	2029	71	10.86	(0.14)	10.14
13-May-22	781	296	364	103	187	1732	89	2100	71	12.71	1.86	10.14
20-May	----	----	----	----	----	----	----	2215	115	----	----	16.43
27-May	----	----	----	----	----	----	----	2313	98	----	----	14.00
3-Jun	----	----	----	----	----	----	----	2411	98	----	----	14.00

Total Working Gas Design Capacity Utilization<sup>7</sup>



Daily Withdrawal/Injection Rate



### RIG COUNTS<sup>8</sup>

Producing:	Oil	Natural Gas	Misc.	US Total	Percentage Oil	Percentage Gas
Latest Week	563	149	2	714	78.9%	20.9%
Prior Week	557	146	2	705	79.0%	20.7%
Year Ago	352	100	1	453	77.7%	22.1%

### HEATING DEGREE DAY SUMMARY<sup>9</sup>

For the week ending 14-May-2022

City	Latest Week	Normal	Percent of Normal
BOSTON	69	61	113.1%
NEW YORK	26	38	68.4%
WASHINGTON	27	20	135.0%
CHICAGO	11	61	18.0%
MINNEAPOLIS	6	58	10.3%
DALLAS	0	6	
OKLAHOMA CITY	0	13	
DENVER	37	69	53.6%
SEATTLE	108	72	150.0%

<sup>1</sup> Statistics as reported by the Energy Information Agency. All figures in Billions of Cubic Feet unless otherwise noted.

<sup>2</sup> South Central region includes TX, OK, KS, LA, MS and AL

<sup>3</sup> East region includes all Atlantic Coast states, including OH, PA, VT, and WV

<sup>4</sup> Midwest region includes MN, IA, MO, WI, IL, MI, IN, KY and TN

<sup>5</sup> Mountain region includes ID, NV, MT, WY, UT, AZ, ND, SD, NE, CO, and NM

<sup>6</sup> Pacific region includes WA, OR, and CA

<sup>7</sup> Reported Gas in Storage as a percentage of Working Gas Design Capacity. For explanation of Working Gas Design Capacity see: [www.eia.gov/naturalgas/storagecapacity/](http://www.eia.gov/naturalgas/storagecapacity/)

<sup>8</sup> As Reported By Baker-Hughes. Miscellaneous includes wells drilling for both Oil and Gas.

<sup>9</sup> Heating Degree Days given during winter months, Cooling Degree Days over Summer months. Changeover is as appropriate.