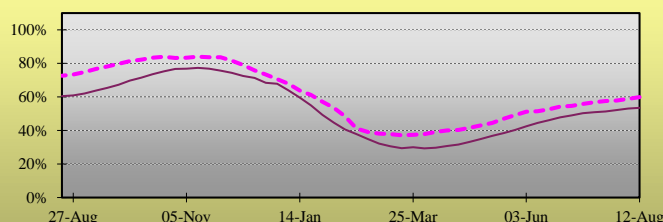


## Weekly Natural Gas Report

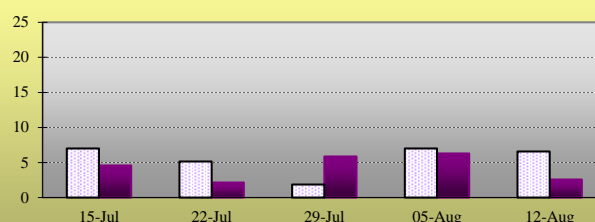
### EIA STATISTICS<sup>1</sup>

Week Ending	REPORTED GAS IN STORAGE						DAILY WITHDRAWAL/INJECTION					
	South Central <sup>2</sup>	East <sup>3</sup>	Midwest <sup>4</sup>	Mountain <sup>5</sup>	Pacific <sup>6</sup>	2022 Total	Week Change	2021 Total	Week Change	2022	Week Change	2021
22-Jul	862	532	625	144	253	2416	15	2714	36	2.14	(2.43)	5.14
29-Jul	865	549	643	147	253	2457	41	2727	13	5.86	3.71	1.86
5-Aug	874	564	663	148	252	2501	44	2776	49	6.29	0.43	7.00
12-Aug-22	866	571	684	151	248	2519	18	2822	46	2.57	(3.71)	6.57
19-Aug	----	----	----	----	----	----	----	2851	29	----	----	4.14
26-Aug	----	----	----	----	----	----	----	2871	20	----	----	2.86
2-Sep	----	----	----	----	----	----	----	2923	52	----	----	7.43

Total Working Gas Design Capacity Utilization<sup>7</sup>



Daily Withdrawal/Injection Rate



### RIG COUNTS<sup>8</sup>

Producing:	Oil	Natural Gas	Misc.	US Total	Percentage Oil	Percentage Gas
Latest Week	601	160	2	763	78.8%	21.0%
Prior Week	598	161	5	764	78.3%	21.1%
Year Ago	397	102	1	500	79.4%	20.4%

### COOLING DEGREE DAY SUMMARY<sup>9</sup>

For the week ending 13-Aug-2022

City	Latest Week	Normal	Percent of Normal
BOSTON	85	60	141.7%
NEW YORK	120	84	142.9%
WASHINGTON	116	98	118.4%
CHICAGO	50	58	86.2%
MINNEAPOLIS	41	49	83.7%
DALLAS	171	140	122.1%
OKLAHOMA CITY	140	119	117.6%
DENVER	98	56	175.0%
SEATTLE	35	14	250.0%

<sup>1</sup> Statistics as reported by the Energy Information Agency. All figures in Billions of Cubic Feet unless otherwise noted.

<sup>2</sup> South Central region includes TX, OK, KS, LA, MS and AL

<sup>3</sup> East region includes all Atlantic Coast states, including OH, PA, VT, and WV

<sup>4</sup> Midwest region includes MN, IA, MO, WI, IL, MI, IN, KY and TN

<sup>5</sup> Mountain region includes ID, NV, MT, WY, UT, AZ, ND, SD, NE, CO, and NM

<sup>6</sup> Pacific region includes WA, OR, and CA

<sup>7</sup> Reported Gas in Storage as a percentage of Working Gas Design Capacity. For explanation of Working Gas Design Capacity see: [www.eia.gov/naturalgas/storagecapacity/](http://www.eia.gov/naturalgas/storagecapacity/)

<sup>8</sup> As Reported By Baker-Hughes. Miscellaneous includes wells drilling for both Oil and Gas.

<sup>9</sup> Heating Degree Days given during winter months, Cooling Degree Days over Summer months. Changeover is as appropriate.