

## Daily Futures Market Commentary Livestock Outlook

### MONDAY JANUARY 30, 2023 LIVESTOCK REPORT

Chris Lehner, Senior Livestock Analyst | 312.242.7942 | [chris.lehner@admis.com](mailto:chris.lehner@admis.com)

#### CATTLE

JANUARY 27, 2023	124,000
WEEK AGO	123,000
YEAR AGO	118,000
SATURDAY 01/28/2023	31,000 A WEEK AGO 30,000, YEAR AGO 58,000
WEEK TO DATE (EST)	659,000
SAME PERIOD LAST WEEK (EST)	646,000
SAME PERIOD LAST YEAR (ACT)	655,000
2023 YEAR TO DATE	2,530,000
2022 YEAR TO DATE	2,530,000
YEAR TO DATE PERCENT CHANGE	0.0%

BOXED BEEF 2:00 PM	CHOICE	SELECT
CURRENT CUTOFF VALUES:	267.76	250.54 <b>271.72</b>
<b>256.43</b>		
CHANGE FROM PRIOR DAY:	(0.99)	(0.94)
CHOICE/SELECT SPREAD:		17.22
TOTAL LOAD COUNT (CUTS, TRIMMINGS, GRINDS)		111
5 DAY SIMPLE AVERAGE:	269.97	253.32

CME BOXED BEEF INDEX ON 01/26/2023 WAS 266.50 DOWN 83 CENTS FROM PREVIOUS DAY  
CME BOXED BEEF INDEX ON 01/19/2023 WAS 271.99 DOWN 1.04 PREVIOUS WEEK

2:00 PM JANUARY 27, 2023

PRIMAL RIB	442.53	381.30
------------	--------	--------

ADMIS.com | 312.242.7000 | Chicago | New York | London | Hong Kong | Singapore | Taipei | Shanghai

The information and comments contained herein is provided by ADM Investor Services, Inc. ("ADMIS") and NOT ADM. Futures and options trading involve significant risk of loss and may not be suitable for everyone. Therefore, carefully consider whether such trading is suitable for you in light of your financial condition. This report includes information from sources believed to be reliable and accurate as of the date of this publication, but no independent verification has been made and we do not guarantee its accuracy or completeness. Any reproduction or retransmission of this report without the express written consent of ADM Investor Services, Inc. is strictly prohibited. Again, the information and comments contained herein is provided by ADMIS and in no way should be construed to be information provided by ADM. Copyright © ADM Investor Services, Inc.

PRIMAL CHUCK	214.77	203.16
PRIMAL ROUND	212.38	212.76
PRIMAL LOIN	371.95	341.50
PRIMAL BRISKET	193.47	186.39
PRIMAL SHORT PLATE	179.02	179.02
PRIMAL FLANK	147.05	145.44

#### PREVIOUS WEEK 2:00 PM JANUARY 20, 2023

PRIMAL RIB	439.01	380.01
PRIMAL CHUCK	222.99	220.66
PRIMAL ROUND	216.52	218.84
PRIMAL LOIN	376.99	337.97
PRIMAL BRISKET	195.59	193.52
PRIMAL SHORT PLATE	177.38	177.38
PRIMAL FLANK	145.38	145.64

=====

#### LOAD COUNT AND CUTOFF VALUE SUMMARY

Date	Choice	Select	Trim	Grinds	Total	600-900	600-900
01/26	77	17	10	15	120	268.75	251.48
01/25	85	28	6	17	137	268.28	251.80
01/24	88	23	13	14	138	269.64	252.39
01/23	49	16	28	14	107	271.44	254.49
01/20	85	10	5	28	129 FRIDAY	271.72	256.43 FRIDAY

=====

#### National Boxed Beef Cuts - Negotiated Sales

FOB Plant basis negotiated sales for delivery within 0-21 day period. Prior days sales after 1:30pm are included

Choice Cuts	74.61 loads	2,984,294 pounds
Select Cuts	14.74 loads	589,762 pounds
Trimming	8.42 loads	336,681 pounds
Ground Beef	12.87 loads	514,964 pounds

#### WEEKLY FUTURES PRICE CHANGE

	01/20/2023	01/27/2023
FEBRUARY 2023 LIVE CATTLE	156.62	156.72
APRIL 2023 LIVE CATTLE	159.92	160.82
JUNE 2023 LIVE CATTLE	156.57	157.77
AUGUST 2023 LIVE CATTLE	156.75	157.75

ADMIS.com | 312.242.7000 | Chicago | New York | London | Hong Kong | Singapore | Taipei | Shanghai

The information and comments contained herein is provided by ADM Investor Services, Inc. ("ADMIS") and NOT ADM. Futures and options trading involve significant risk of loss and may not be suitable for everyone. Therefore, carefully consider whether such trading is suitable for you in light of your financial condition. This report includes information from sources believed to be reliable and accurate as of the date of this publication, but no independent verification has been made and we do not guarantee its accuracy or completeness. Any reproduction or retransmission of this report without the express written consent of ADM Investor Services, Inc. is strictly prohibited. Again, the information and comments contained herein is provided by ADMIS and in no way should be construed to be information provided by ADM. Copyright © ADM Investor Services, Inc.

OCTOBER 2023 LIVE CATTLE	161.42	162.15
DECEMBER 2023 LIVE CATTLE	165.22	165.82

=====

Live Cattle are being pushed and pulled by traders. Traders ignored the improving beef exports and are trading the negative boxed beef down trend.

The Cattle on Feed Report was friendly but boxed beef has been steadily going down. Bulls want to buy the COF report and bears want to sell the negative beef prices with traders looking for price improvement when cattle numbers significantly drop. Cattle remain bull spread for the April/June that is showing a positive inclination.

=====

Beef net sales were 25,100 MT. South Korea, the best buyer in 2022 came back taking 10,000MT followed by Japan with 4400 mt and China taking 4200 mt about the average China has been lately taking

=====

National Weekly Fed Cattle Comprehensive Report January 24, 2023

As of January 24, 2023 dressed steer and heifer carcasses averaged 880.9 pounds down 3.1 pounds the previous week. The grading percent was 84.5% compared to previous week at 84.1%.

[https://www.ams.usda.gov/mnreports/ams\\_2700.pdf](https://www.ams.usda.gov/mnreports/ams_2700.pdf)

=====

\*\*\*NATIONAL DAILY DIRECT CATTLE 01/27/23

5 DAY ACCUMULATED WEIGHTED AVG

	WEIGHT	PRICE	HEAD
LIVE STEER:	1508	\$154.88	14,616
LIVE HEIFER:	1320	\$155.26	5,664
DRESSED STEER:	949	\$247.87	17,974
DRESSED HEIFER:	832	\$247.59	4,369

PREVIOUS WEEK

\*\*\*NATIONAL DAILY DIRECT CATTLE 01/20/23

5 DAY ACCUMULATED WEIGHTED AVG

	WEIGHT	PRICE	HEAD
LIVE STEER:	1466	\$155.74	32,475
LIVE HEIFER:	1339	\$155.58	13,907
DRESSED STEER:	938	\$249.22	17,322
DRESSED HEIFER:	869	\$248.95	5,196

=====

USDA POSTED SUMMARY CATTLE PRICES ON 01/26/2023

\*\*STEER PRICES

IA/MN – CASH – 155.00 - 156.00 AVERAGE PRICE 155.49  
 DELIVERED - 158.00 ON 599 HEAD  
 DRESSED - 246.00 - 248.00

ADMIS.com | 312.242.7000 | Chicago | New York | London | Hong Kong | Singapore | Taipei | Shanghai

The information and comments contained herein is provided by ADM Investor Services, Inc. ("ADMIS") and NOT ADM. Futures and options trading involve significant risk of loss and may not be suitable for everyone. Therefore, carefully consider whether such trading is suitable for you in light of your financial condition. This report includes information from sources believed to be reliable and accurate as of the date of this publication, but no independent verification has been made and we do not guarantee its accuracy or completeness. Any reproduction or retransmission of this report without the express written consent of ADM Investor Services, Inc. is strictly prohibited. Again, the information and comments contained herein is provided by ADMIS and in no way should be construed to be information provided by ADM. Copyright © ADM Investor Services, Inc.

NE – CASH - NO REPORTABLE TRADE ON FRIDAY  
 CASH - 152.00 - 153.50 AVERAGE PRICE 152.89 ON 974 HEAD  
 HEIFERS - 153.00 - 155.00 ON 719 HEAD AVERAGE PRICE 154.32  
 DRESSED - 245.00 - 248.00 ON FRIDAY 247.00 ON 264 HEAD

KS – CASH – 156.00 FOR THE WEEK A TOTAL OF 1956 HEAD SOLD IN KS  
 DRESSED - 248.00 ON 126 HEAD MIXED LOAD

TX/OK/NM CASH – 156.00 A TOTAL OF JUST 679 SOLD  
 DRESSED – NO REPORTABLE TRADE.

CO – \*\*NOT REPORTED DUE TO CONFIDENTIALITY\*\*

NATIONAL WEEKLY DIRECT BEEF TYPE PRICE DISTRIBUTION  
 USDA WEIGHTED AVERAGE PRICE

[HTTPS://MYMARKETNEWS.AMS.USDA.GOV/VIEWREPORT/3492](https://mymarketnews.ams.usda.gov/viewreport/3492)

APRIL 2023 LIVE CATTLE/APRIL 2023 LEAN HOGS – CATTLE SHOULD CONTINUE TO GAIN ON HOGS



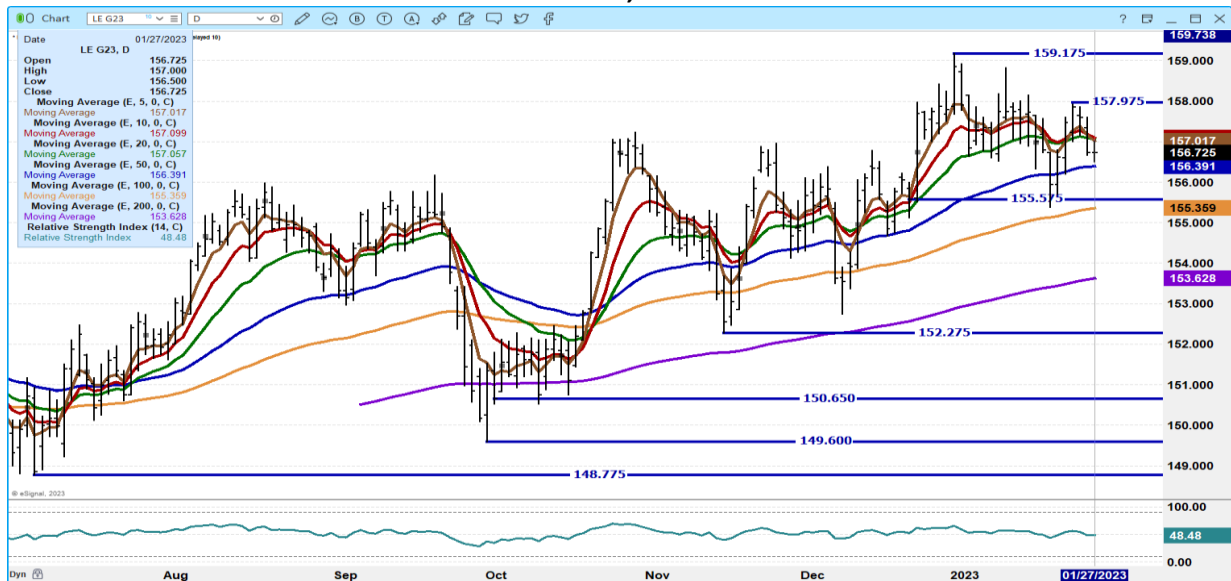
ADMIS.com | 312.242.7000 | Chicago | New York | London | Hong Kong | Singapore | Taipei | Shanghai

The information and comments contained herein is provided by ADM Investor Services, Inc. ("ADMIS") and NOT ADM. Futures and options trading involve significant risk of loss and may not be suitable for everyone. Therefore, carefully consider whether such trading is suitable for you in light of your financial condition. This report includes information from sources believed to be reliable and accurate as of the date of this publication, but no independent verification has been made and we do not guarantee its accuracy or completeness. Any reproduction or retransmission of this report without the express written consent of ADM Investor Services, Inc. is strictly prohibited. Again, the information and comments contained herein is provided by ADMIS and in no way should be construed to be information provided by ADM. Copyright © ADM Investor Services, Inc.

## APRIL 2023/JUNE 2023 LIVE CATTLE SPREAD – BULL SPREAD NARROWING



## FEBRUARY 2022 LIVE CATTLE – VOLUME AT 12,541 OPEN INTEREST AT 38746



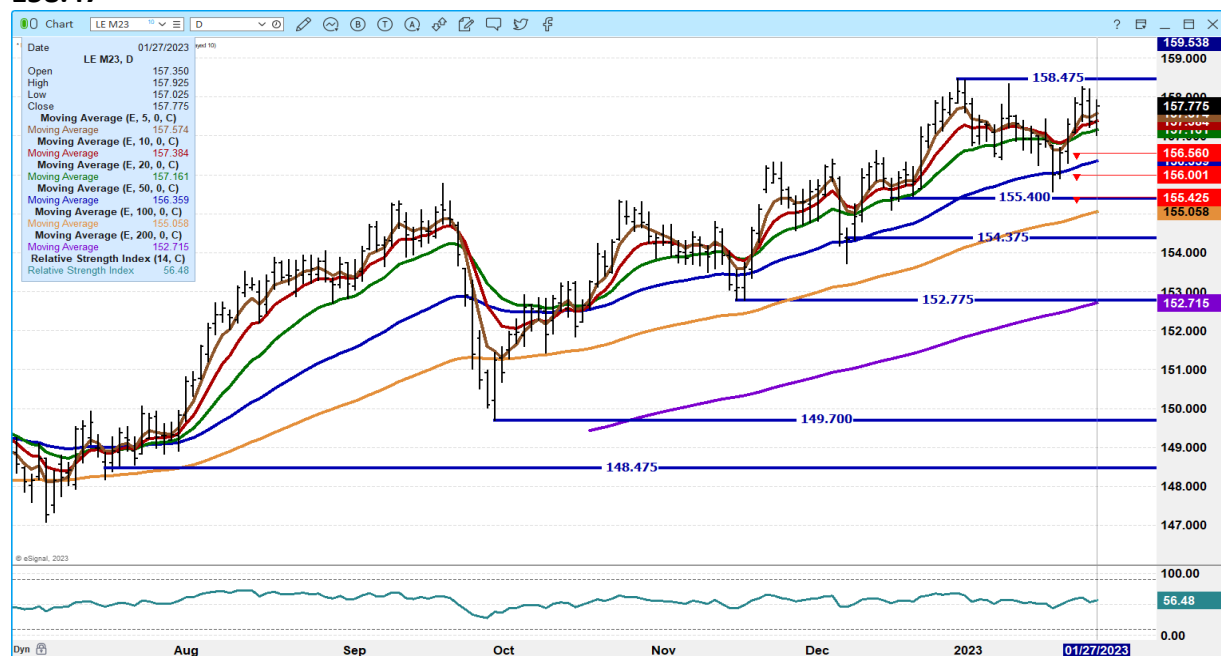
ADMIS.com | 312.242.7000 | Chicago | New York | London | Hong Kong | Singapore | Taipei | Shanghai

The information and comments contained herein is provided by ADM Investor Services, Inc. ("ADMIS") and NOT ADM. Futures and options trading involve significant risk of loss and may not be suitable for everyone. Therefore, carefully consider whether such trading is suitable for you in light of your financial condition. This report includes information from sources believed to be reliable and accurate as of the date of this publication, but no independent verification has been made and we do not guarantee its accuracy or completeness. Any reproduction or retransmission of this report without the express written consent of ADM Investor Services, Inc. is strictly prohibited. Again, the information and comments contained herein is provided by ADMIS and in no way should be construed to be information provided by ADM. Copyright © ADM Investor Services, Inc.

## APRIL 2023 LIVE CATTLE – VOLUME AT 21,408 RESISTANCE AT 161.77 TO 162.75 SUPPORT AT 160.05 TO 158.92



## JUNE 2023 LIVE CATTLE - VOLUME AT 6823 SUPPORT AT 156.5- TO 155.40 RESISTANCE AT 158.47



ADMIS.com | 312.242.7000 | Chicago | New York | London | Hong Kong | Singapore | Taipei | Shanghai

The information and comments contained herein is provided by ADM Investor Services, Inc. ("ADMIS") and NOT ADM. Futures and options trading involve significant risk of loss and may not be suitable for everyone. Therefore, carefully consider whether such trading is suitable for you in light of your financial condition. This report includes information from sources believed to be reliable and accurate as of the date of this publication, but no independent verification has been made and we do not guarantee its accuracy or completeness. Any reproduction or retransmission of this report without the express written consent of ADM Investor Services, Inc. is strictly prohibited. Again, the information and comments contained herein is provided by ADMIS and in no way should be construed to be information provided by ADM. Copyright © ADM Investor Services, Inc.



## FEEDER CATTLE

CME FEEDER INDEX ON 01/26/2022 WAS 179.57 UP 77 FROM PREVIOUS DAY –  
CME FEEDER INDEX ON 01/25/2022 WAS 159.50 – YEAR AGO

JANUARY 2022 FEEDER CATTLE FUTURES SETTLED ON JANUARY 26, 2023 AT \$179.57 JANUARY  
SETTLEMENT FUTURES PRICE

JANUARY 2022 FEEDER CATTLE FUTURES SETTLED ON JANUARY 27, 2022 AT \$158.92 – YEAR AGO

=====

### WEEKLY FUTURES PRICE CHANGE

	01/20/2023	01/27/2023
JANUARY 2023 FEEDER CATTLE	177.92	179.57 SETTLED FUTURES PRICE
MARCH 2023 FEEDER CATTLE	180.97	183.47
APRIL 2023 FEEDER CATTLE	185.77	187.55
MAY 2023 FEEDER CATTLE	190.35	191.85
AUGUST 2023 FEEDER CATTLE	203.95	205.10
SEPTEMBER 2023 FEEDER CATTLE	207.27	207.75
OCTOBER 2023 FEEDER CATTLE	209.80	209.72
NOVEMBER 2023 FEEDER CATTLE	211.37	211.10

=====

FEEDER CATTLE CLOSED UP FOR THE WEEK AND TRADERS WERE BULL SPREADING.

=====

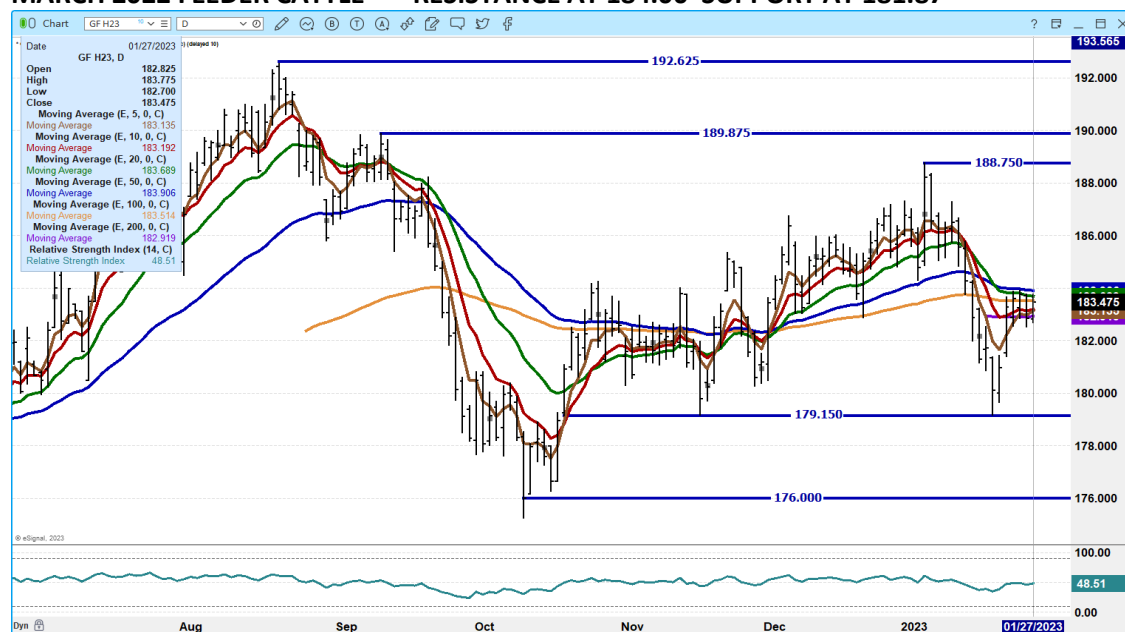
### MARCH 2023 FEEDER CATTLE/MAY 2023 FEEDER CATTLE SPREAD – BEAR SPREAD



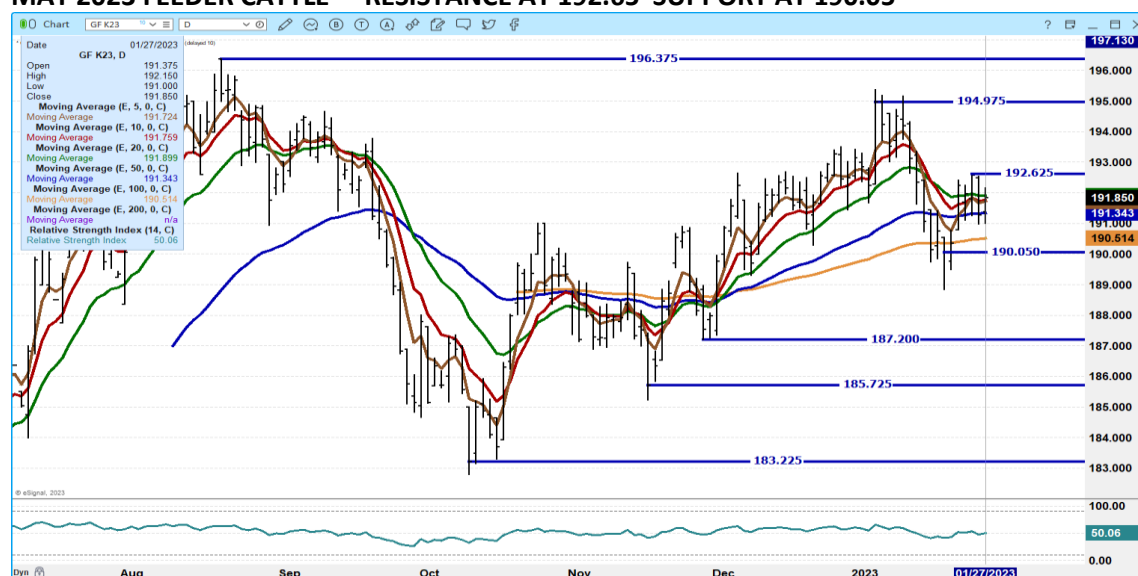
ADMIS.com | 312.242.7000 | Chicago | New York | London | Hong Kong | Singapore | Taipei | Shanghai

The information and comments contained herein is provided by ADM Investor Services, Inc. ("ADMIS") and NOT ADM. Futures and options trading involve significant risk of loss and may not be suitable for everyone. Therefore, carefully consider whether such trading is suitable for you in light of your financial condition. This report includes information from sources believed to be reliable and accurate as of the date of this publication, but no independent verification has been made and we do not guarantee its accuracy or completeness. Any reproduction or retransmission of this report without the express written consent of ADM Investor Services, Inc. is strictly prohibited. Again, the information and comments contained herein is provided by ADMIS and in no way should be construed to be information provided by ADM. Copyright © ADM Investor Services, Inc.

## MARCH 2022 FEEDER CATTLE – RESISTANCE AT 184.00 SUPPORT AT 181.87



## MAY 2023 FEEDER CATTLE – RESISTANCE AT 192.65 SUPPORT AT 190.05



=====

ADMIS.com | 312.242.7000 | Chicago | New York | London | Hong Kong | Singapore | Taipei | Shanghai

The information and comments contained herein is provided by ADM Investor Services, Inc. ("ADMIS") and NOT ADM. Futures and options trading involve significant risk of loss and may not be suitable for everyone. Therefore, carefully consider whether such trading is suitable for you in light of your financial condition. This report includes information from sources believed to be reliable and accurate as of the date of this publication, but no independent verification has been made and we do not guarantee its accuracy or completeness. Any reproduction or retransmission of this report without the express written consent of ADM Investor Services, Inc. is strictly prohibited. Again, the information and comments contained herein is provided by ADMIS and in no way should be construed to be information provided by ADM. Copyright © ADM Investor Services, Inc.



## **LEAN HOGS**

### **USDA ESTIMATED FEDERAL HOG SLAUGHTER**

<b>JANUARY 27, 2023</b>	<b>487,000</b>
<b>WEEK AGO</b>	<b>485,000</b>
<b>YEAR AGO</b>	<b>463,000</b>
<b>SATURDAY 01/28/2023</b>	<b>95,000 - A WEEK AGO 220,000 - YEAR AGO 194,000</b>
<b>WEEK TO DATE (EST)</b>	<b>2,536,000</b>
<b>SAME PERIOD LAST WEEK (EST)</b>	<b>2,531,000</b>
<b>SAME PERIOD LAST YEAR (ACT)</b>	<b>2,530,000</b>
<b>2023 YEAR TO DATE</b>	<b>10,102,000</b>
<b>2022 *YEAR TO DATE</b>	<b>9,885,000</b>
<b>YEAR TO DATE PERCENT CHANGE PLUS</b>	<b>2.8%</b>

=====

**CME LEAN HOG INDEX ON 01/25/2023 WAS \$72.52 UP 20 CENTS FROM PREVIOUS DAY**  
**CME CASH LEAN HOG INDEX 01/25/2021 AT \$78.20 – YEAR AGO**

**CME PORK CUTOUT INDEX 01/26/2022 AT \$80.12 UP 20 CENTS FROM PREVIOUS DAY**  
**CME PORK CUTOUT INDEX 01/26/2021 AT \$93.69 – YEAR AGO**

**CME CASH FRESH BACON INDEX ON JANUARY 20, 2023 WAS 118.71 COMPARED TO JANUARY 13, 2022 AT 125.83**

**THE CME LEAN HOG INDEX IS MINUS 7.60 TO THE CME PORK INDEX.**

=====

### **WEEKLY FUTURES PRICE CHANGE**

	<b>01/20/2023</b>	<b>01/27/2022</b>
<b>FEBRUARY 2023 LEAN HOGS</b>	<b>77.82</b>	<b>75.87</b>
<b>APRIL 2023 LEAN HOGS</b>	<b>85.72</b>	<b>86.45</b>
<b>JUNE 2023 LEAN HOGS</b>	<b>102.52</b>	<b>103.40</b>
<b>JULY 2023 LEAN HOGS</b>	<b>104.12</b>	<b>104.87</b>
<b>AUGUST 2023 LEAN HOGS</b>	<b>103.72</b>	<b>104.57</b>
<b>OCTOBER 2023 LEAN HOGS</b>	<b>91.05</b>	<b>91.75</b>
<b>DECEMBER 2023 LEAN HOGS</b>	<b>83.87</b>	<b>84.25</b>

=====

### **COMPARING CURRENT PRICES TO A YEAR AGO**

**Comparing the CME Lean Hog Index and the CME Pork Index to a year ago helps to show why hog prices have come down. The Lean Hog Index is down \$5.68 from 2022 and the CME Pork Index is down \$13.57 from a year ago. This year the CME Lean Hogs to the CME Pork Index is \$7.60 under the Pork Index and a year ago the CME Lean Hog Index to the CME Pork Index was \$15.49 under the Pork Index.**

**ADMIS.com | 312.242.7000 | Chicago | New York | London | Hong Kong | Singapore | Taipei | Shanghai**

The information and comments contained herein is provided by ADM Investor Services, Inc. ("ADMIS") and NOT ADM. Futures and options trading involve significant risk of loss and may not be suitable for everyone. Therefore, carefully consider whether such trading is suitable for you in light of your financial condition. This report includes information from sources believed to be reliable and accurate as of the date of this publication, but no independent verification has been made and we do not guarantee its accuracy or completeness. Any reproduction or retransmission of this report without the express written consent of ADM Investor Services, Inc. is strictly prohibited. Again, the information and comments contained herein is provided by ADMIS and in no way should be construed to be information provided by ADM. Copyright © ADM Investor Services, Inc.

Packer profit margins as of January 21, 2023 according to Sterling Marketing were \$6.02 and a year ago were \$24.35 or \$18.33/head more in 2022.

On January 27, 2022 year to date slaughter was 10,102,000 head compared to 2023 at 9,885,000 head.

A year ago the 5 day pork carcass was \$94.94 compared to now at \$79.76, loins were \$97.53 compared to now at \$82.12. Hams in 2022 were \$72.11 compared to now at \$76.51, Bellies were much better at \$156.02 and now at \$92.13. Ribs were also much better at \$148.97 and no 117. 54 with Butts and Picnics not much different.

=====

Bear Spreads can look good, but...

From April 2023, traders are widening bear spreads, selling the front months and buying into August. Bear spreads make months in the future look like they are going to be much improved over the near by months but as traders unwind spreads, it pressures the back months. December 2022 Lean Hogs went off the board at \$82.35 and cash settled at \$81.88. On December 14<sup>th</sup> \$83.40 and as of January 25, 2023 they settled at \$75.87.

=====

Strong pork exports at 44,700 MT Mexico took 17,700 MT followed by China taking 12,500 MT but dropping to Japan with just 3,700MT China likely is buying to refill stocks after the heavy use of pork during the Lunar New Year. It is disappointing to see Japan taking a small amount of pork. Trade agreements with Brazil has hurt US exports to Japan and there are rumors and talk that China is selling pork to Japan.

=====

#### PORK REPORT FOB PLANT - NEGOTIATED SALES

Based on negotiated prices and volume of pork cuts delivered within 14 days and on average industry cutting yields. Calculations for 215 lb. Pork Carcass. 55-56% lean, 0.55"-0.70" BF Last Rib

Loads PORK CUTS : 299.64

Loads TRIM/PROCESS PORK : 23.88

2:00 AM	LOADS	CARCASS	LOIN	BUTT	PIC	RIB	HAM	BELLY
01/27/2022	323.52	79.25	83.34	97.76	56.52	116.99	75.19	89.08
CHANGE:		-1.21	-0.62	2.51	-1.19	0.96	-3.77	-1.70
FIVE DAY AVERAGE --		79.96	82.12	95.82	58.92	117.54	76.51	92.13

#### PREVIOUS WEEK

2:00 PM	LOADS	CARCASS	LOIN	BUTT	PIC	RIB	HAM	BELLY
01/20/2022	309.71	79.99	81.75	91.56	56.63	117.61	74.54	100.55
CHANGE:		0.42	0.24	2.55	-1.77	0.49	-7.28	12.59
FIVE DAY AVERAGE --		79.10	81.73	91.41	61.79	118.94	74.37	91.42

#### PREVIOUS YEAR

2:00 AM	LOADS	CARCASS	LOIN	BUTT	PIC	RIB	HAM	BELLY
01/27/2022	253.74	98.19	99.30	96.42	57.69	148.57	80.66	161.25

ADMIS.com | 312.242.7000 | Chicago | New York | London | Hong Kong | Singapore | Taipei | Shanghai

The information and comments contained herein is provided by ADM Investor Services, Inc. ("ADMIS") and NOT ADM. Futures and options trading involve significant risk of loss and may not be suitable for everyone. Therefore, carefully consider whether such trading is suitable for you in light of your financial condition. This report includes information from sources believed to be reliable and accurate as of the date of this publication, but no independent verification has been made and we do not guarantee its accuracy or completeness. Any reproduction or retransmission of this report without the express written consent of ADM Investor Services, Inc. is strictly prohibited. Again, the information and comments contained herein is provided by ADMIS and in no way should be construed to be information provided by ADM. Copyright © ADM Investor Services, Inc.

CHANGE:	3.59	2.36	-3.54	-2.13	6.00	7.76	7.40
FIVE DAY AVERAGE --	94.84	97.53	97.82	57.63	148.97	72.11	156.02

=====

**\*\*NATIONAL DAILY DIRECT HOG PRIOR DAY REPORT - SLAUGHTERED SWINE**

[https://www.ams.usda.gov/mnreports/AMS\\_2511.pdf](https://www.ams.usda.gov/mnreports/AMS_2511.pdf)

**SLAUGHTER DATA FOR JANUARY 26, 2023**

**\*\*PRODUCER SOLD:**

AVERAGE LIVE WEIGHT 286.23

AVERAGE CARCASS WEIGHT 214.24

HEAD COUNT 238,638

**PACKER SOLD:**

AVERAGE LIVE WEIGHT 297.14

AVERAGE CARCASS WEIGHT 220.56

HEAD COUNT 33,452

**PACKER OWNED:**

AVERAGE LIVE WEIGHT 293.66

AVERAGE CARCASS WEIGHT 221.48

HEAD COUNT 189,385

=====

**\*\*DAILY DIRECT AFTERNOON HOG REPORT - PLANT DELIVERED PURCHASE**

**JANUARY 27, 2023**

<https://www.ams.usda.gov/sites/default/files/media/LMRswineReportingHandout.pdf>

**National Negotiated Carcass Price**

Head Count: 6,789

Lowest price: 63.00

Highest price: 74.50

Weighted Average 70.63

Change from Previous Day -0.30 lower

**National Negotiated Carcass Price JANUARY 20, 2023 PREVIOUS WEEK**

Head Count: 6,436

Lowest price: 64.00

Highest price: 74.00

Weighted Average 70.90

Change from Previous Day 0.55 higher

**Other Market Formula (Carcass)**

Head Count: 17,146

Lowest Base Price: 58.25

Highest Base Price: 84.10

Weighted Average Price: 75.26

ADMIS.com | 312.242.7000 | Chicago | New York | London | Hong Kong | Singapore | Taipei | Shanghai

The information and comments contained herein is provided by ADM Investor Services, Inc. ("ADMIS") and NOT ADM. Futures and options trading involve significant risk of loss and may not be suitable for everyone. Therefore, carefully consider whether such trading is suitable for you in light of your financial condition. This report includes information from sources believed to be reliable and accurate as of the date of this publication, but no independent verification has been made and we do not guarantee its accuracy or completeness. Any reproduction or retransmission of this report without the express written consent of ADM Investor Services, Inc. is strictly prohibited. Again, the information and comments contained herein is provided by ADMIS and in no way should be construed to be information provided by ADM. Copyright © ADM Investor Services, Inc.

### Swine/Pork Market Formula (Carcass)

Head Count 148,264

Lowest base price: 61.71

Highest Base Price: 80.00

Weighted Average Price 71.49

### Other Purchase Arrangement (Carcass)

HEAD COUNT: 65,479

Lowest base price: 67.32

Highest base price: 112.97

Weighted Average Price: 78.01

### JUNE CATTLE/JUNE HOG SPREAD - CATTLE SHOULD GAIN ON HOGS



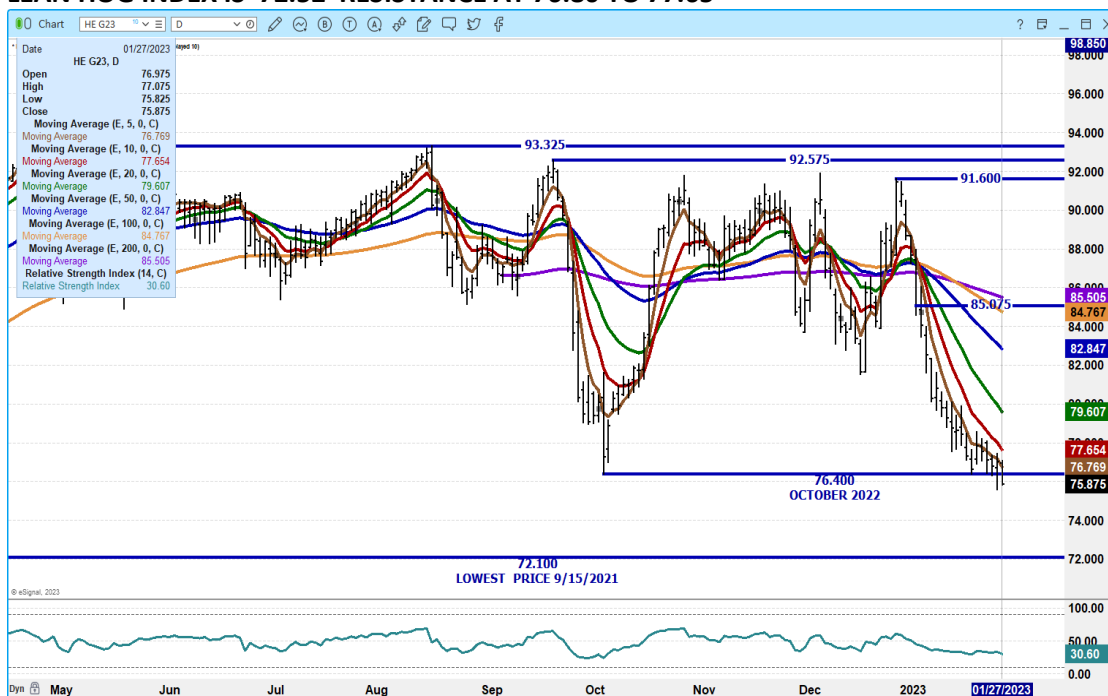
ADMIS.com | 312.242.7000 | Chicago | New York | London | Hong Kong | Singapore | Taipei | Shanghai

The information and comments contained herein is provided by ADM Investor Services, Inc. ("ADMIS") and NOT ADM. Futures and options trading involve significant risk of loss and may not be suitable for everyone. Therefore, carefully consider whether such trading is suitable for you in light of your financial condition. This report includes information from sources believed to be reliable and accurate as of the date of this publication, but no independent verification has been made and we do not guarantee its accuracy or completeness. Any reproduction or retransmission of this report without the express written consent of ADM Investor Services, Inc. is strictly prohibited. Again, the information and comments contained herein is provided by ADMIS and in no way should be construed to be information provided by ADM. Copyright © ADM Investor Services, Inc.

## APRIL 2023/JUNE LEAN HOG 2023 SPREAD – BEAR SPREAD



## FEBRUARY 2023 LEAN HOGS - VOLUME AT 5978 OPEN INTEREST AT 26,160 SUPPORT AT 72.10 CME LEAN HOG INDEX IS 72.52 RESISTANCE AT 76.80 TO 77.65



ADMIS.com | 312.242.7000 | Chicago | New York | London | Hong Kong | Singapore | Taipei | Shanghai

The information and comments contained herein is provided by ADM Investor Services, Inc. ("ADMIS") and NOT ADM. Futures and options trading involve significant risk of loss and may not be suitable for everyone. Therefore, carefully consider whether such trading is suitable for you in light of your financial condition. This report includes information from sources believed to be reliable and accurate as of the date of this publication, but no independent verification has been made and we do not guarantee its accuracy or completeness. Any reproduction or retransmission of this report without the express written consent of ADM Investor Services, Inc. is strictly prohibited. Again, the information and comments contained herein is provided by ADMIS and in no way should be construed to be information provided by ADM. Copyright © ADM Investor Services, Inc.

# **APRIL 2023 LEAN HOGS – VOLUME AT 16,098 SUPPORT AT 83.70 TO 82.65 RESISTANCE AT 88.20**



# **JUNE 2023 LEAN HOGS - VOLUME 6988 RESISTANCE AT 104.62 SUPPORT AT 102.85 TO 100.17**



=====

**CHARTS FROM ESIGNAL INTERACTIVE, INC.**

**Christopher Lehner**

[chris.lehner@admis.com](mailto:chris.lehner@admis.com)

312 242 7942

913.787.6804

**ADMIS.com | 312.242.7000 | Chicago | New York | London | Hong Kong | Singapore | Taipei | Shanghai**

The information and comments contained herein is provided by ADM Investor Services, Inc. ("ADMIS") and NOT ADM. Futures and options trading involve significant risk of loss and may not be suitable for everyone. Therefore, carefully consider whether such trading is suitable for you in light of your financial condition. This report includes information from sources believed to be reliable and accurate as of the date of this publication, but no independent verification has been made and we do not guarantee its accuracy or completeness. Any reproduction or retransmission of this report without the express written consent of ADM Investor Services, Inc. is strictly prohibited. Again, the information and comments contained herein is provided by ADMIS and in no way should be construed to be information provided by ADM. Copyright © ADM Investor Services, Inc.