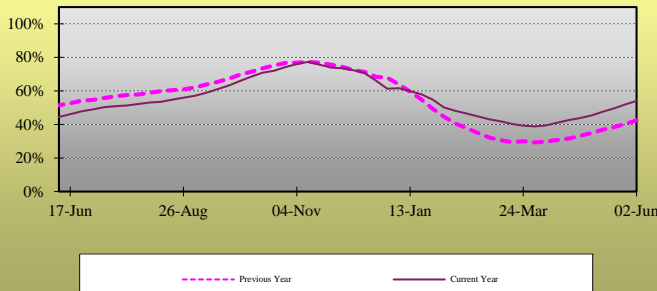


## Weekly Natural Gas Report

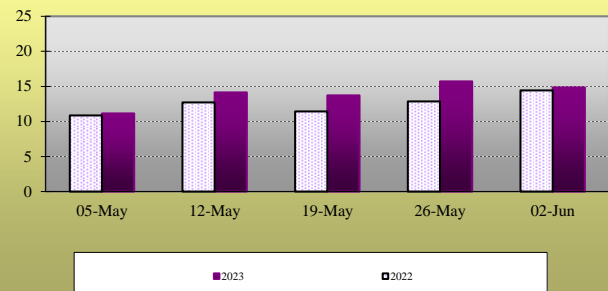
### EIA STATISTICS<sup>1</sup>

Week Ending	REPORTED GAS IN STORAGE						DAILY WITHDRAWAL/INJECTION					
	South Central <sup>2</sup>	East <sup>3</sup>	Midwest <sup>4</sup>	Mountain <sup>5</sup>	Pacific <sup>6</sup>	2022 Total	Week Change	2021 Total	Week Change	2022	Week Change	2021
12-May	1023	458	520	112	127	2240	99	1732	89	14.14	3.00	12.71
19-May	1042	489	546	120	139	2336	96	1812	80	13.71	(0.43)	11.43
26-May	1070	522	577	127	151	2446	110	1902	90	15.71	2.00	12.86
2-Jun-23	1093	552	604	137	164	2550	104	2003	101	14.86	(0.86)	14.43
9-Jun	----	----	----	----	----	----	----	2095	92	----	----	13.14
16-Jun	----	----	----	----	----	----	----	2169	74	----	----	10.57
23-Jun	----	----	----	----	----	----	----	2251	82	----	----	11.71

**Total Working Gas Design Capacity Utilization<sup>7</sup>**



**Daily Withdrawal/Injection Rate**



### RIG COUNTS<sup>8</sup>

Producing:	Oil	Natural Gas	Misc.	US Total	Percentage Oil	Percentage Gas
Latest Week	555	137	4	696	79.7%	19.7%
Prior Week	570	137	4	711	80.2%	19.3%
Year Ago	574	151	2	727	79.0%	20.8%

### COOLING DEGREE DAY SUMMARY<sup>9</sup>

For the week ending 3-Jun-2023

City	Latest Week	Normal	Percent of Normal
BOSTON	20	16	125.0%
NEW YORK	30	26	115.4%
WASHINGTON	42	45	93.3%
CHICAGO	70	21	333.3%
MINNEAPOLIS	87	19	457.9%
DALLAS	98	87	112.6%
OKLAHOMA CITY	61	56	108.9%
DENVER	3	15	20.0%
SEATTLE	0	0	

<sup>1</sup> Statistics as reported by the Energy Information Agency. All figures in Billions of Cubic Feet unless otherwise noted.

<sup>2</sup> South Central region includes TX, OK, KS, LA, MS and AL

<sup>3</sup> East region includes all Atlantic Coast states, including OH, PA, VT, and WV

<sup>4</sup> Midwest region includes MN, IA, MO, WI, IL, MI, IN, KY and TN

<sup>5</sup> Mountain region includes ID, NV, MT, WY, UT, AZ, ND, SD, NE, CO, and NM

<sup>6</sup> Pacific region includes WA, OR, and CA

<sup>7</sup> Reported Gas in Storage as a percentage of Working Gas Design Capacity. For explanation of Working Gas Design Capacity see: [www.eia.gov/naturalgas/storagecapacity/](http://www.eia.gov/naturalgas/storagecapacity/)

<sup>8</sup> As Reported By Baker-Hughes. Miscellaneous includes wells drilling for both Oil and Gas.

<sup>9</sup> Heating Degree Days given during winter months, Cooling Degree Days over Summer months. Changeover is as appropriate.