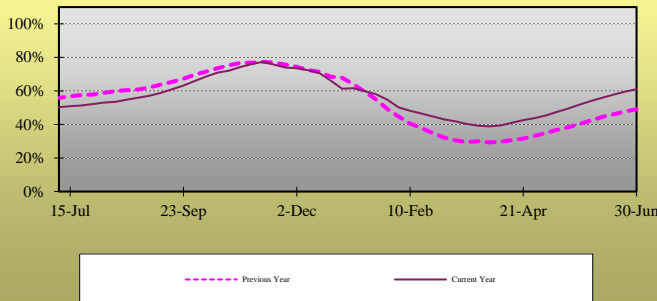


## Weekly Natural Gas Report

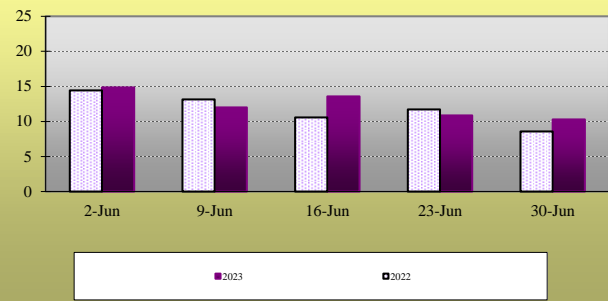
### EIA STATISTICS<sup>1</sup>

Week Ending	REPORTED GAS IN STORAGE						DAILY WITHDRAWAL/INJECTION					
	South Central <sup>2</sup>	East <sup>3</sup>	Midwest <sup>4</sup>	Mountain <sup>5</sup>	Pacific <sup>6</sup>	2022	Week	2021	Week	2022	Week	2021
						Total	Change	Total	Change	Total	Change	
9-Jun	1105	574	632	148	176	2634	84	2095	92	12.00	(2.86)	13.14
16-Jun	1125	599	658	157	191	2729	95	2169	74	13.57	1.57	10.57
23-Jun	1128	623	685	165	204	2805	76	2251	82	10.86	(2.71)	11.71
30-Jun-23	1141	643	705	173	216	2877	72	2311	60	10.29	(0.57)	8.57
7-Jul	----	----	----	----	----	----	----	2369	58	----	----	8.29
14-Jul	----	----	----	----	----	----	----	2401	32	----	----	4.57
21-Jul	----	----	----	----	----	----	----	2416	15	----	----	2.14

**Total Working Gas Design Capacity Utilization<sup>7</sup>**



**Daily Withdrawal/Injection Rate**



### RIG COUNTS<sup>8</sup>

Producing:	Oil	Natural Gas	Misc.	US Total	Percentage Oil	Percentage Gas
Latest Week	545	124	5	674	80.9%	18.4%
Prior Week	546	130	6	682	80.1%	19.1%
Year Ago	595	153	2	750	79.3%	20.4%

### COOLING DEGREE DAY SUMMARY<sup>9</sup>

For the week ending 1-Jul-2023

City	Latest Week	Normal	Percent of Normal
BOSTON	59	47	125.5%
NEW YORK	78	67	116.4%
WASHINGTON	96	89	107.9%
CHICAGO	76	51	149.0%
MINNEAPOLIS	76	47	161.7%
DALLAS	172	128	134.4%
OKLAHOMA CITY	126	103	122.3%
DENVER	30	46	65.2%
SEATTLE	12	7	171.4%

<sup>1</sup> Statistics as reported by the Energy Information Agency. All figures in Billions of Cubic Feet unless otherwise noted.

<sup>2</sup> South Central region includes TX, OK, KS, LA, MS and AL

<sup>3</sup> East region includes all Atlantic Coast states, including OH, PA, VT, and WV

<sup>4</sup> Midwest region includes MN, IA, MO, WI, IL, MI, IN, KY and TN

<sup>5</sup> Mountain region includes ID, NV, MT, WY, UT, AZ, ND, SD, NE, CO, and NM

<sup>6</sup> Pacific region includes WA, OR, and CA

<sup>7</sup> Reported Gas in Storage as a percentage of Working Gas Design Capacity. For explanation of Working Gas Design Capacity see: [www.eia.gov/naturalgas/storagecapacity/](http://www.eia.gov/naturalgas/storagecapacity/)

<sup>8</sup> As Reported By Baker-Hughes. Miscellaneous includes wells drilling for both Oil and Gas.

<sup>9</sup> Heating Degree Days given during winter months, Cooling Degree Days over Summer months. Changeover is as appropriate.