



ADM Investor Services, Inc.



Daily Futures Market Commentary Livestock Outlook

WEDNESDAY MORNING JUNE 16, 2026 LIVESTOCK REPORT
CHRIS LEHNER, SENIOR LIVESTOCK ANALYST | 312.242.7942 | 913.787.6804 |
CHRIS.LEHNER@ADMIS.COM

CATTLE

JUNE 16, 2026	109,000
WEEK AGO	109,000
YEAR AGO	118,040
WEEK TO DATE	208,000
PREVIOUS WEEK	211,000
PREVIOUS WEEK IN 2025	218,822
YEAR TO DATE 2026	12,452,877
YEAR TO DATE 2025	13,677,127
PERCENT CHANGE YEAR TO DATE	- 9.0%
HTTPS://WWW.AMS.USDA.GOV/MNREPORTS/AMS_3208.PDF	

=====

FOR WEEK ENDING JUNE 13, 2026 CATTLE SLAUGHTER WAS 524,000 DOWN 9,000 COMPARED TO LAST WEEK AND COMPARED TO THE SAME PERIOD A YEAR AGO DOWN 36,282HEAD. YEAR TO DATE CATTLE SLAUGHTER IS DOWN 1,213,428 HEAD.

=====

ADMIS.com | 312.242.7000
Chicago | New York | Houston | Amsterdam | London | Hong Kong | Singapore | Taipei

This material is intended to be a solicitation.

Futures and options trading involve significant risk of loss and may not be suitable for everyone. Therefore, carefully consider whether such trading is suitable for you in light of your financial condition. The opinions and viewpoints expressed herein are limited to that of the individual author(s) as of a specified date. They are subject to change based on market conditions or other considerations. They do not constitute individualized recommendations or take into account the financial considerations or trading objectives of individual customers. This publication is intended to assist in your analysis and evaluation of the futures and options markets. However, any decisions to buy, sell or hold a futures or options position are entirely your own and should not in any way deemed to be endorsed by ADM Investor Services, Inc. ("ADMIS"). Transactions in options carry a high degree of risk. Purchasers and seller of options should familiarize themselves with the type of option (i.e., put or call) which they contemplate trading and the associated risks. You should calculate the extent to which the value of the options must increase for your position to become profitable, taking into account the premium and all transaction costs. Spread strategies using combinations of positions, such as spread and straddle positions may be as risky as taking a simple long or short position. Actual results or performance may vary from those expressed or implied herein. Past performance does not guarantee future results. The information and comments contained herein are provided by ADM Investor Services, Inc. ("ADMIS") and NOT ADM. Any reproduction or retransmission of this report without the express written consent of ADMIS is strictly prohibited.
Copyright © ADM Investor Services, Inc.

2:00 PM JUNE 16, 2026

BOXED BEEF	CHOICE	SELECT
CURRENT CUTOUT VALUES:	399.58	376.85
CHANGE FROM PRIOR DAY:	4.53	0.44
CHOICE/SELECT SPREAD:	22.73	
TOTAL LOAD COUNT (CUTS, TRIMMINGS, GRINDS):	95	
CURRENT 5 DAY SIMPLE AVERAGE:	393.28	375.00

=====

CME BOXED BEEF INDEX ON 06/15/2026 WAS 390.48 UP .40 FROM PREVIOUS DAY

=====

11:00 AM JUNE 15, 2026

PRIMAL RIB	592.44	484.09
PRIMAL CHUCK	343.58	341.62
PRIMAL ROUND	335.84	339.34
PRIMAL LOIN	506.89	459.56
PRIMAL BRISKET	344.84	340.81
PRIMAL SHORT PLATE	309.63	309.63
PRIMAL FLANK	253.64	244.17

=====

LOAD COUNT AND CUTOUT VALUE SUMMARY

DATE	CHOICE	SELECT	TRIM	GRINDS	TOTAL	CHOICE	SELECT
06/15	41	9	6	12	68	395.05	376.41
06/12	53	9	4	11	77	391.93	FRIDAY 372.72
06/11	84	14	8	5	110	393.21	373.25
06/10	68	14	10	15	107	393.29	375.71
06/09	111	17	0	10	138	392.90	376.93

=====

JUNE 12, 2026 (ONE LOAD EQUALS 40,000 POUNDS)

CHOICE CUTS	69.88 LOADS	2,795,309 POUNDS
SELECT CUTS	11.82 LOADS	472,689 POUNDS
TRIMMINGS	0.00 LOADS	0 POUNDS
GROUND BEEF	13.17 LOADS	526,717 POUNDS

ADMIS.com | 312.242.7000

Chicago | New York | Houston | Amsterdam | London | Hong Kong | Singapore | Taipei

This material is intended to be a solicitation.

Futures and options trading involve significant risk of loss and may not be suitable for everyone. Therefore, carefully consider whether such trading is suitable for you in light of your financial condition. The opinions and viewpoints expressed herein are limited to that of the individual author(s) as of a specified date. They are subject to change based on market conditions or other considerations. They do not constitute individualized recommendations or take into account the financial considerations or trading objectives of individual customers. This publication is intended to assist in your analysis and evaluation of the futures and options markets. However, any decisions to buy, sell or hold a futures or options position are entirely your own and should not in any way be deemed to be endorsed by ADM Investor Services, Inc. ("ADMIS"). Transactions in options carry a high degree of risk. Purchasers and seller of options should familiarize themselves with the type of option (i.e., put or call) which they contemplate trading and the associated risks. You should calculate the extent to which the value of the options must increase for your position to become profitable, taking into account the premium and all transaction costs. Spread strategies using combinations of positions, such as spread and straddle positions may be as risky as taking a simple long or short position. Actual results or performance may vary from those expressed or implied herein. Past performance does not guarantee future results. The information and comments contained herein are provided by ADM Investor Services, Inc. ("ADMIS") and NOT ADM. Any reproduction or retransmission of this report without the express written consent of ADMIS is strictly prohibited.

USDA REPORTS FOR JUNE 2026
CATTLE ON FEED – JUNE 18, 2026
HOGS AND PIGS – JUNE 25, 2026
COLD STORAGE - JUNE 25, 2026
LIVESTOCK SLAUGHTER- JUNE 25, 2026

=====
JUNE 2026 LIVE CATTLE DELIVERIES

0 DELIVERIES

DATE 06/16/2026 SETTLEMENT: \$255.30

OLDEST LONG 11/07/2025 \$213.05

JUNE LIVE CATTLE OPEN INTEREST 06/17/2026 = 10,664 CONTRACTS

=====

DAILY DIRECT 5 DAY WEIGHTED AVERAGE STEER PRICE JUNE 16, 2027 \$256.18

JUNE 2026 LIVE CATTLE SETTLED ON JUNE 16, 2026 AT \$255.30

JUNE LIVE CATTLE FUTURES ARE \$.88 UNDER THE WEIGHTED AVERAGE STEER PRICE 06/15/2026

=====

NATIONAL GRADING SUMMARY
AS OF JUNE 6, 2026 - UPDATED JUNE 14, 2026

PRIME 15.59%
CHOICE 72.86%
SELECT 8.59%
PRIME/CHOICE 88.45%

=====

IMPORTED BEEF PASSED FOR ENTRY INTO THE U.S.
YEAR TO DATE: 05/31/2026 TO 6/06/2026 WEEK 23

FRESH BEEF (METRIC TONS)

	2026	2025	% CHANGE
TOTAL *	831,674	749,662	11%

PROCESSED BEEF(METRIC TONS)

TOTAL	37,433	36,927	1%
--------------	---------------	---------------	-----------

[HTTPS://WWW.AMS.USDA.GOV/MNREPORTS/LSWIMPE.PDF](https://www.ams.usda.gov/mnreports/lswympe.pdf)

ADMIS.com | 312.242.7000

Chicago | New York | Houston | Amsterdam | London | Hong Kong | Singapore | Taipei

This material is intended to be a solicitation.

Futures and options trading involve significant risk of loss and may not be suitable for everyone. Therefore, carefully consider whether such trading is suitable for you in light of your financial condition. The opinions and viewpoints expressed herein are limited to that of the individual author(s) as of a specified date. They are subject to change based on market conditions or other considerations. They do not constitute individualized recommendations or take into account the financial considerations or trading objectives of individual customers. This publication is intended to assist in your analysis and evaluation of the futures and options markets. However, any decisions to buy, sell or hold a futures or options position are entirely your own and should not in any way deemed to be endorsed by ADM Investor Services, Inc. ("ADMIS"). Transactions in options carry a high degree of risk. Purchasers and seller of options should familiarize themselves with the type of option (i.e., put or call) which they contemplate trading and the associated risks. You should calculate the extent to which the value of the options must increase for your position to become profitable, taking into account the premium and all transaction costs. Spread strategies using combinations of positions, such as spread and straddle positions may be as risky as taking a simple long or short position. Actual results or performance may vary from those expressed or implied herein. Past performance does not guarantee future results. The information and comments contained herein are provided by ADM Investor Services, Inc. ("ADMIS") and NOT ADM. Any reproduction or retransmission of this report without the express written consent of ADMIS is strictly prohibited.

Copyright © ADM Investor Services, Inc.

***THERE ARE A TOTAL 16 COUNTRIES THAT EXPORT FRESH BEEF TO THE U.S. BUT 8 ARE NOT LARGE ENOUGH TO LIST ON THIS REPORT.**

=====

AS OF WEEKENDING JUNE 13TH U.S. FEDERAL CATTLE SLAUGHTER WAS DOWN 1,213,428 HEAD, 9.1% LESS COMPARED TO SAME PERIOD IN 2025. BUT WITH HIGHER CATTLE WEIGHTS IN 2026 WITH LAST WEEK'S WEIGHTS UP 56 POUNDS COMPARED TO THE SAME IN 2025, BEEF PRODUCTION IS DOWN 6.3%.

=====

12 CASES OF NWS NOW HAVE BEEN CONFIRMED. ONE IN NEW MEXICO AND 11 IN TEXAS OVER 6 COUNTIES.

=====

TRADERS BULL SPREAD TUESDAY . VOLUME WAS MODERATELY ACTIVE. JUNE CATTLE CLOSED ON A NEW CONTRACT HIGH. SO FAR, PACKERS ARE SLOW TO BID, BUT WITH HIGHER BEEF PRICES, LIKELY WILL NEED TO PAY UP.

=====

THE BEEF AND CATTLE MARKETS HAVE CONCENTRATED ON THE LACK OF LEAN BEEF ESPECIALLY LEAN TRIMMINGS FOR THE GROUND BEEF MARKET. HOWEVER, THE LEAN BEEF IS MOSTLY FOR FAST FOOD RESTAURANTS AND PROCESSORS. BUT OVER THE PAST YEAR FAST FOOD RESTAURANTS HAVE BEEN INCREASING CHICKEN PRODUCTS OVER HAMBURGERS AND WITH THE INCREASE OF LEAN BEEF IMPORTS THEY ARE GETTING MORE LEAN BEEF TO BLEND. BEEF IMPORTS HAVE INCREASED 11% TO 15% PER WEEK IN 2026. CONSUMERS WANTING TO BUY CHEAPER BEEF AT THE GROCERY STORE ARE ABLE TO BUY MORE GROUND BEEF SUCH AS 80% LEAN TO 20% FAT. BIGGER HIGHER GRADING CATTLE ARE A BENEFIT WHEN CUTS SUCH AS CHOICE CHUCKS AND ROUNDS ARE HEADED FOR GRINDERS.

=====

ESTIMATED WEEKLY BEEF PRODUCTION UNDER FEDERAL INSPECTION WEEK ENDING JUNE 13, 2026

FOR WEEK ENDING JUNE 13, 2026 CATTLE WEIGHTS WERE 1465 DOWN 5 POUNDS FROM LAST WEEK AND UP 56 POUNDS FROM A YEAR AGO.

PRODUCTION WAS DOWN -2.1% COMPARED TO THE PREVIOUS WEEK AND DOWN -2.8% COMPARED TO SAME PERIOD A YEAR AGO. YEAR TO DATE PRODUCTION IS DOWN -6.3%

=====

ADMIS.com | 312.242.7000

Chicago | New York | Houston | Amsterdam | London | Hong Kong | Singapore | Taipei

This material is intended to be a solicitation.

Futures and options trading involve significant risk of loss and may not be suitable for everyone. Therefore, carefully consider whether such trading is suitable for you in light of your financial condition. The opinions and viewpoints expressed herein are limited to that of the individual author(s) as of a specified date. They are subject to change based on market conditions or other considerations. They do not constitute individualized recommendations or take into account the financial considerations or trading objectives of individual customers. This publication is intended to assist in your analysis and evaluation of the futures and options markets. However, any decisions to buy, sell or hold a futures or options position are entirely your own and should not in any way be deemed to be endorsed by ADM Investor Services, Inc. ("ADMIS"). Transactions in options carry a high degree of risk. Purchasers and seller of options should familiarize themselves with the type of option (i.e., put or call) which they contemplate trading and the associated risks. You should calculate the extent to which the value of the options must increase for your position to become profitable, taking into account the premium and all transaction costs. Spread strategies using combinations of positions, such as spread and straddle positions may be as risky as taking a simple long or short position. Actual results or performance may vary from those expressed or implied herein. Past performance does not guarantee future results. The information and comments contained herein are provided by ADM Investor Services, Inc. ("ADMIS") and NOT ADM. Any reproduction or retransmission of this report without the express written consent of ADMIS is strictly prohibited.

Copyright © ADM Investor Services, Inc.

EXPORTS

BEEF SALES EXPORTS FOR WEEK ENDING JUNE 04, 2026 WERE 19,000 MT COMPARED TO A WEEK AGO AT 4,900 MT. THE LARGEST BUYERS WAS SOUTH KOREA AT 7,000 MT, JAPAN AT 4200 MT AND MEXICO TAKING 2400 MT.

=====

NATIONAL DAILY DIRECT CATTLE

5 DAY ACCUMULATED WGHTEG AVG 06/16/2026

LIVE STEER:	1541	\$256.18	13,987
LIVE HEIFER	1388	\$256.26	7,228
DRESSED STEER	1006	\$404.71	5,072
DRESSED HEIFER:	892	\$404.63	1,807

=====

USDA POSTED SUMMARY CATTLE PRICES ON 06/16/2026

IA/MN – CASH FOB – NO REPORTABLE TRADE.

DRESSED DELIVERED 403.00 ON 97 HEAD GRID MIXED LOAD WEIGHING 976.1

LIVE DELIVERED NO REPORTABLE TRADE.

DRESSED FOB NO REPORTABLE TRADE.

NE – CASH FOB - NO REPORTABLE TRADE.

DRESSED DELIVERED NO REPORTABLE TRADE.

LIVE DELIVERED NO REPORTABLE TRADE.

DRESSED FOB - NO REPORTABLE TRADE

KS – CASH FOB NO REPORTABLE TRADE.

LIVE DELIVERED - REPORTABLE TRADE

DRESSED DELIVERED NO REPORTABLE TRADE.

DRESSED FOB NO REPORTABLE TRADE.

TX/OK/NM – NO REPORTABLE TRADE.

=====

STERLING MARKETING BEEF MARGINS WEEK ENDING JUNE 6, 2026

PACKER MARGIN (\$/HEAD (\$237.74) LAST WEEK (\$291.75) MONTH AGO (\$298.39) YEAR AGO (\$276.34)

FEEDLOT MARGINS \$456.21 LAST WEEK \$355.52 MONTH AGO 186.70 YEAR AGO \$756.57

STERLING MARKETING USES THE COMPREHENSIVE BEEF CUTOUT VALUE REPORTED BY USDA.

=====

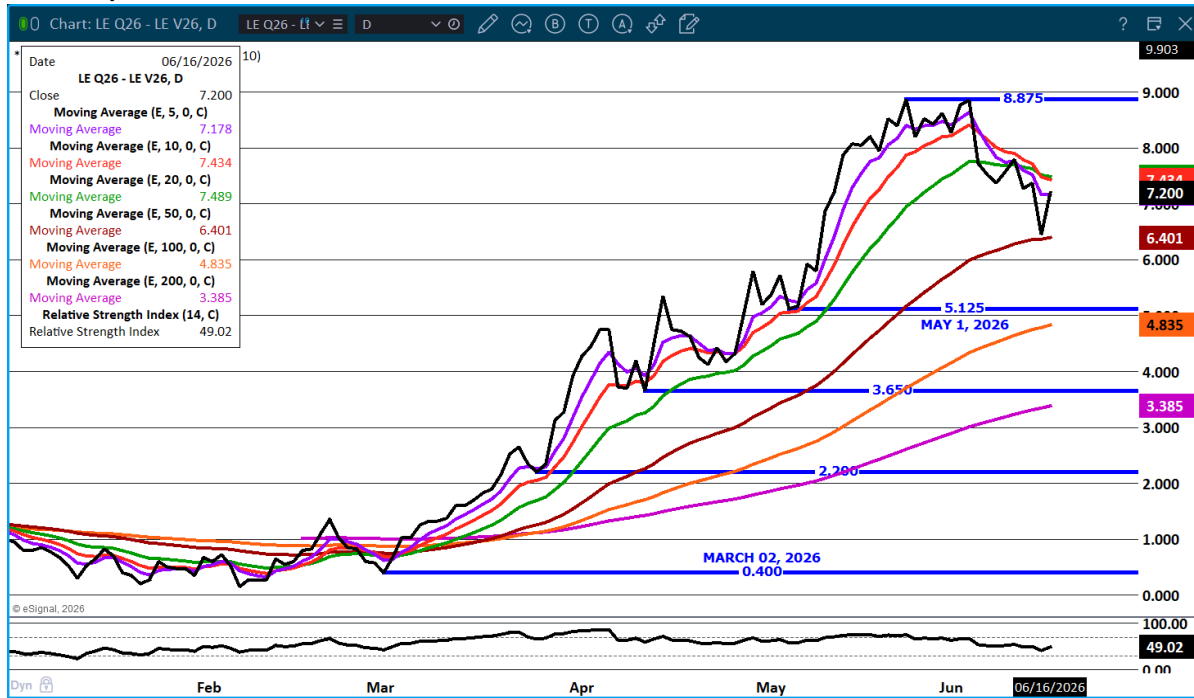
ADMIS.com | 312.242.7000

Chicago | New York | Houston | Amsterdam | London | Hong Kong | Singapore | Taipei

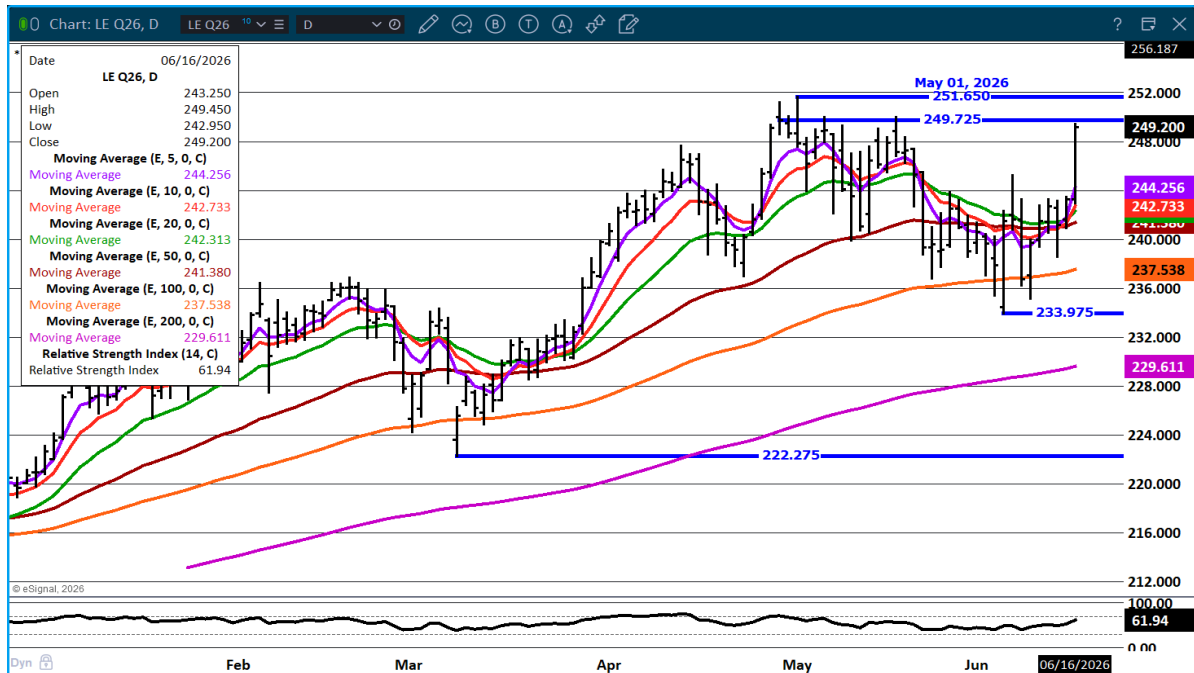
This material is intended to be a solicitation.

Futures and options trading involve significant risk of loss and may not be suitable for everyone. Therefore, carefully consider whether such trading is suitable for you in light of your financial condition. The opinions and viewpoints expressed herein are limited to that of the individual author(s) as of a specified date. They are subject to change based on market conditions or other considerations. They do not constitute individualized recommendations or take into account the financial considerations or trading objectives of individual customers. This publication is intended to assist in your analysis and evaluation of the futures and options markets. However, any decisions to buy, sell or hold a futures or options position are entirely your own and should not in any way deemed to be endorsed by ADM Investor Services, Inc. ("ADMIS"). Transactions in options carry a high degree of risk. Purchasers and seller of options should familiarize themselves with the type of option (i.e., put or call) which they contemplate trading and the associated risks. You should calculate the extent to which the value of the options must increase for your position to become profitable, taking into account the premium and all transaction costs. Spread strategies using combinations of positions, such as spread and straddle positions may be as risky as taking a simple long or short position. Actual results or performance may vary from those expressed or implied herein. Past performance does not guarantee future results. The information and comments contained herein are provided by ADM Investor Services, Inc. ("ADMIS") and NOT ADM. Any reproduction or retransmission of this report without the express written consent of ADMIS is strictly prohibited. Copyright © ADM Investor Services, Inc.

AUGUST/OCTOBER LIVE CATTLE SPREAD –



AUGUST LIVE CATTLE – RESISTANCE AT 249.72 TO CONTRACT HIGH SUPPORT AT 244.25



ADMIS.com | 312.242.7000

Chicago | New York | Houston | Amsterdam | London | Hong Kong | Singapore | Taipei

This material is intended to be a solicitation.

Futures and options trading involve significant risk of loss and may not be suitable for everyone. Therefore, carefully consider whether such trading is suitable for you in light of your financial condition. The opinions and viewpoints expressed herein are limited to that of the individual author(s) as of a specified date. They are subject to change based on market conditions or other considerations. They do not constitute individualized recommendations or take into account the financial considerations or trading objectives of individual customers. This publication is intended to assist in your analysis and evaluation of the futures and options markets. However, any decisions to buy, sell or hold a futures or options position are entirely your own and should not in any way be deemed to be endorsed by ADM Investor Services, Inc. ("ADMIS"). Transactions in options carry a high degree of risk. Purchasers and seller of options should familiarize themselves with the type of option (i.e., put or call) which they contemplate trading and the associated risks. You should calculate the extent to which the value of the options must increase for your position to become profitable, taking into account the premium and all transaction costs. Spread strategies using combinations of positions, such as spread and straddle positions may be as risky as taking a simple long or short position. Actual results or performance may vary from those expressed or implied herein. Past performance does not guarantee future results. The information and comments contained herein are provided by ADM Investor Services, Inc. ("ADMIS") and NOT ADM. Any reproduction or retransmission of this report without the express written consent of ADMIS is strictly prohibited.

Copyright © ADM Investor Services, Inc.

FEEDER CATTLE

CME FEEDER INDEX ON 06/15/2026 WAS \$ 364.00 UP 1.33 FROM PREVIOUS DAY

AUGUST 2026 FEEDER CATTLE SETTLED ON JUNE 16 2026 AT \$365.27

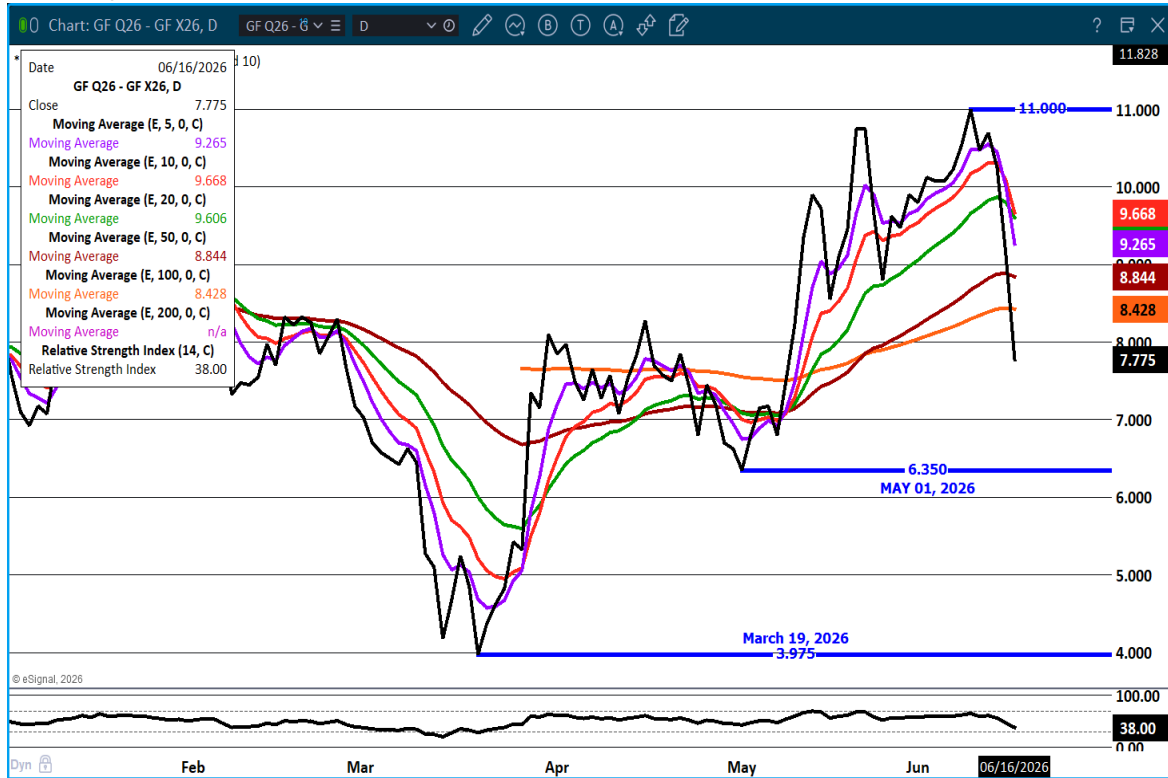
AUGUST FEEDER CATTLE ARE \$1.27 OVER THE CME FEEDER INDEX AS JUNE 16, 2026.

=====

CASH FEEDERS ARE STARTING OUT THE WEEK HIGHER. IN OKLAHOMA FEEDERS WERE UP MONDAY \$10.00 HIGHER. IF CATTLE ARE WEANED, THEY ARE UP \$20.00.

=====

AUGUST/NOVEMBER FEEDER CATTLE SPREAD - BULL SPREAD NARROWING



ADMIS.com | 312.242.7000

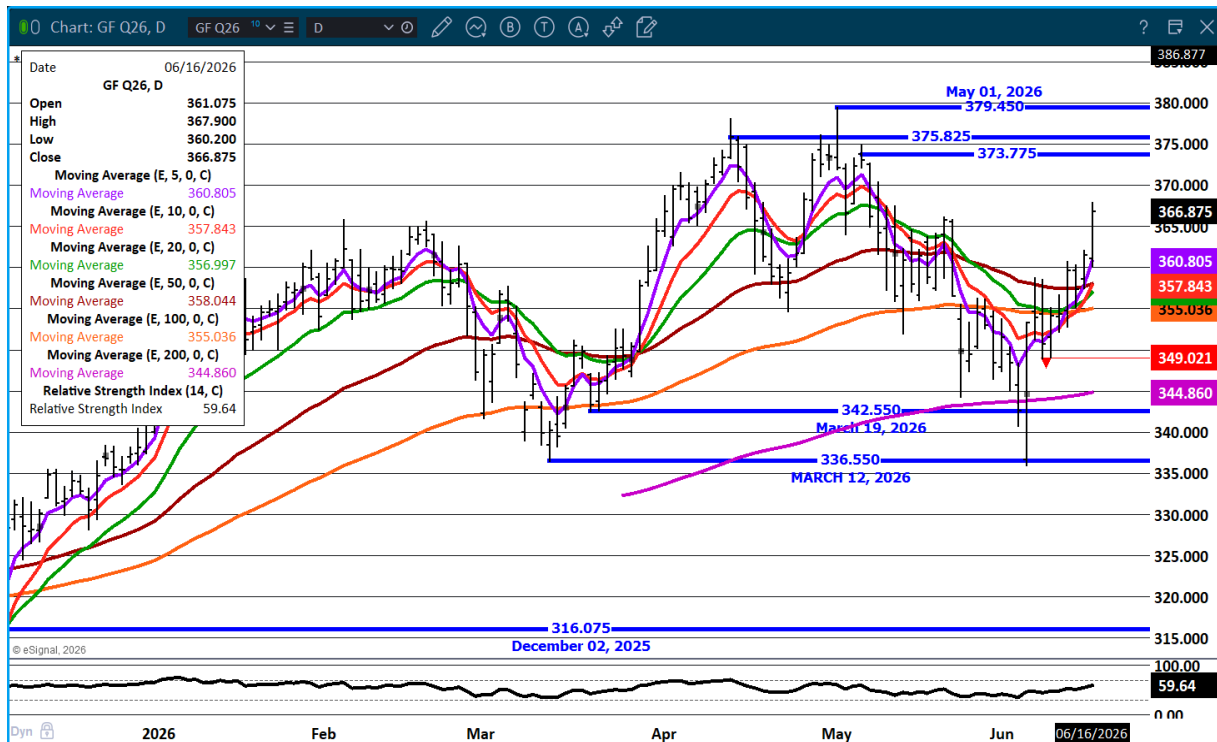
Chicago | New York | Houston | Amsterdam | London | Hong Kong | Singapore | Taipei

This material is intended to be a solicitation.

Futures and options trading involve significant risk of loss and may not be suitable for everyone. Therefore, carefully consider whether such trading is suitable for you in light of your financial condition. The opinions and viewpoints expressed herein are limited to that of the individual author(s) as of a specified date. They are subject to change based on market conditions or other considerations. They do not constitute individualized recommendations or take into account the financial considerations or trading objectives of individual customers. This publication is intended to assist in your analysis and evaluation of the futures and options markets. However, any decisions to buy, sell or hold a futures or options position are entirely your own and should not in any way be deemed to be endorsed by ADM Investor Services, Inc. ("ADMIS"). Transactions in options carry a high degree of risk. Purchasers and seller of options should familiarize themselves with the type of option (i.e., put or call) which they contemplate trading and the associated risks. You should calculate the extent to which the value of the options must increase for your position to become profitable, taking into account the premium and all transaction costs. Spread strategies using combinations of positions, such as spread and straddle positions may be as risky as taking a simple long or short position. Actual results or performance may vary from those expressed or implied herein. Past performance does not guarantee future results. The information and comments contained herein are provided by ADM Investor Services, Inc. ("ADMIS") and NOT ADM. Any reproduction or retransmission of this report without the express written consent of ADMIS is strictly prohibited.

Copyright © ADM Investor Services, Inc.

AUGUST FEEDER CATTLE – RESISTANCE AT 373.77 SUPPORT AT 350.75



=====

HOGS

UPDATE SLAUGHTER JUNE 15, 2026 ** 478,000 PREVIOUS 484,000**

JUNE 16, 2026	485,000
WEEK AGO	476,000
YEAR AGO	478,193
WEEK TO DATE	963,000
PREVIOUS WEEK	941,000
PREVIOUS WEEK IN 2025	953,674
YEAR TO DATE 2026	58,379,793
YEAR TO DATE 2025	58,694,551
PERCENT YTD CHANGE	-0.5%

[HTTPS://WWW.AMS.USDA.GOV/MNREPORTS/AMS_3208.PDF](https://www.ams.usda.gov/mnreports/ams_3208.pdf)

=====

ADMIS.com | 312.242.7000

Chicago | New York | Houston | Amsterdam | London | Hong Kong | Singapore | Taipei

This material is intended to be a solicitation.

Futures and options trading involve significant risk of loss and may not be suitable for everyone. Therefore, carefully consider whether such trading is suitable for you in light of your financial condition. The opinions and viewpoints expressed herein are limited to that of the individual author(s) as of a specified date. They are subject to change based on market conditions or other considerations. They do not constitute individualized recommendations or take into account the financial considerations or trading objectives of individual customers. This publication is intended to assist in your analysis and evaluation of the futures and options markets. However, any decisions to buy, sell or hold a futures or options position are entirely your own and should not in any way be deemed to be endorsed by ADM Investor Services, Inc. ("ADMIS"). Transactions in options carry a high degree of risk. Purchasers and seller of options should familiarize themselves with the type of option (i.e., put or call) which they contemplate trading and the associated risks. You should calculate the extent to which the value of the options must increase for your position to become profitable, taking into account the premium and all transaction costs. Spread strategies using combinations of positions, such as spread and straddle positions may be as risky as taking a simple long or short position. Actual results or performance may vary from those expressed or implied herein. Past performance does not guarantee future results. The information and comments contained herein are provided by ADM Investor Services, Inc. ("ADMIS") and NOT ADM. Any reproduction or retransmission of this report without the express written consent of ADMIS is strictly prohibited.

Copyright © ADM Investor Services, Inc.

UPDATE FOR WEEK ENDING JUNE 13, 2026 HOG SLAUGHTER WAS 2,393,000 DOWN 29,000 HEAD COMPARED TO LAST WEEK AND COMPARED TO THE SAME PERIOD A YEAR AGO DOWN 22,146 HEAD. YEAR TO DATE HOG SLAUGHTER WAS DOWN 324,084 HEAD

=====

CME LEAN HOG INDEX ON 06/12/2026 WAS 92.09 DOWN .66 FROM PREVIOUS DAY

CME PORK CUTOUT INDEX ON 06/15/2026 WAS 96.23 DOWN .24 FROM PREVIOUS DAY

THE CME LEAN HOG INDEX IS MINUS 4.14 THE CME PORK INDEX 06/16/2026.

JUNE 2026 LEAN HOGS SETTLED ON 06/12/2026 \$92.52

JULY 2026 LEAN HOGS SETTLED ON 06/16/2026 AT \$94.80

JULY 2026 LEAN HOG FUTURES ARE \$2.71 OVER THE CME LEAN HOG INDEX JUNE 16, 2026

=====

PACKERS ARE INCREASING SLAUGHTER SO FAR FOR THE WEEK. WITH SMALLER DAILY PORK MOVEMENT, TUESDAY ONLY 291 LOADS, THEY ARE LIKEY FILLING MORE PREVIOUSLY CONTRACT PORK ORDERS THAT MUST BE FILLED.

=====

ESTIMATED WEEKLY PORK PRODUCTION UNDER FEDERAL INSPECTION JUNE 13, 2026

FOR WEEK ENDING JUNE 13, 2026 HOG WEIGHTS WERE 292 UNCHANGED FROM PREVIOUS WEEK AND UP 4 POUND A YEAR AGO.

PRODUCTION WAS DOWN -0.9% COMPARED TO THE PREVIOUS WEEK AND UP 3.2% COMPARED TO SAME PERIOD A YEAR AGO. YEAR TO DATE PRODUCTION WAS UP 0.4%

=====

EXPORTS - WEEK ENDING JUNE 4, 2026

IT WASN'T A SURPRISE TO HAVE PORK EXPORTS DOWN FOR WEEK OF JUNE 4TH. HAMS AND BELLIES HAVE BEEN DROPPING AND BOTH ARE FAVORED CUTS EXPORTED TO MEXICO. MEXICO BUYING LESS FOR ONE WEEK IS NOT A CONCERN, BUT IF MEXICAN BUYERS CONTINUE BUYING LESS, IT WILL BE NEGATIVE FOR PORK PRICES.

PORK EXPORT SALES FOR WEEK ENDING JUNE 4TH WERE 23,500 MT COMPARED TO LAST WEEK AT 38,900 MT DOWN 40% FROM A WEEK AGO AND DOWN 26% ON THE 4 WEEK AVERAGE MEXICO TOOK 6200 MT COMPARED TO LAST WEEK AT 20,400 MT.

=====

ADMIS.com | 312.242.7000

Chicago | New York | Houston | Amsterdam | London | Hong Kong | Singapore | Taipei

This material is intended to be a solicitation.

Futures and options trading involve significant risk of loss and may not be suitable for everyone. Therefore, carefully consider whether such trading is suitable for you in light of your financial condition. The opinions and viewpoints expressed herein are limited to that of the individual author(s) as of a specified date. They are subject to change based on market conditions or other considerations. They do not constitute individualized recommendations or take into account the financial considerations or trading objectives of individual customers. This publication is intended to assist in your analysis and evaluation of the futures and options markets. However, any decisions to buy, sell or hold a futures or options position are entirely your own and should not in any way deemed to be endorsed by ADM Investor Services, Inc. ("ADMIS"). Transactions in options carry a high degree of risk. Purchasers and seller of options should familiarize themselves with the type of option (i.e., put or call) which they contemplate trading and the associated risks. You should calculate the extent to which the value of the options must increase for your position to become profitable, taking into account the premium and all transaction costs. Spread strategies using combinations of positions, such as spread and straddle positions may be as risky as taking a simple long or short position. Actual results or performance may vary from those expressed or implied herein. Past performance does not guarantee future results. The information and comments contained herein are provided by ADM Investor Services, Inc. ("ADMIS") and NOT ADM. Any reproduction or retransmission of this report without the express written consent of ADMIS is strictly prohibited.

Copyright © ADM Investor Services, Inc.

NATIONAL DAILY PORK REPORT FOB PLANT - NEGOTIATED SALES

LOADS PORK CUTS : 265.83

LOADS TRIM/PROCESS PORK : 25.29

2:00 PM	LOADS	CARCASS	LOIN	BUTT	PIC	RIB	HAM	BELLY
06/16/2026	291.12	95.57	93.26	123.35	79.13	176.06	76.53	122.29
CHANGE:		-1.55	-0.94	-3.57	-1.71	-0.75	-3.50	-0.92
FIVE DAY AVERAGE		96.10	93.53	126.94	78.57	174.94	79.58	120.71

=====

PLANT DELIVERED PURCHASES JUNE 16, 2026 - NATIONAL NEGOTIATED PRICE

HEAD COUNT 8,650
LOWEST BASE PRICE 90.00
HIGHEST PRICE 98.00
WEIGHTED AVERAGE 97.57
CHANGE FROM PREVIOUS DAY 0.32

OTHER MARKET FORMULA (CARCASS)

HEAD COUNT: 19,526
LOWEST BASE PRIC *
HIGHEST BASE PRICE *
WEIGHTED AVERAGE PRICE *

SWINE/PORK MARKET FORMULA (CARCASS)

HEAD COUNT 155,033
LOWEST BASE PRICE: 78.66
HIGHEST BASE PRICE 101.75
WEIGHTED AVERAGE PRICE 90.07

OTHER PURCHASE ARRANGEMENT (CARCASS)

HEAD COUNT: 68,263
LOWEST BASE PRICE 82.28
HIGHEST BASE PRICE 108.45
WEIGHTED AVERAGE PRICE 90.14

=====

ADMIS.com | 312.242.7000

Chicago | New York | Houston | Amsterdam | London | Hong Kong | Singapore | Taipei

This material is intended to be a solicitation.

Futures and options trading involve significant risk of loss and may not be suitable for everyone. Therefore, carefully consider whether such trading is suitable for you in light of your financial condition. The opinions and viewpoints expressed herein are limited to that of the individual author(s) as of a specified date. They are subject to change based on market conditions or other considerations. They do not constitute individualized recommendations or take into account the financial considerations or trading objectives of individual customers. This publication is intended to assist in your analysis and evaluation of the futures and options markets. However, any decisions to buy, sell or hold a futures or options position are entirely your own and should not in any way deemed to be endorsed by ADM Investor Services, Inc. ("ADMIS"). Transactions in options carry a high degree of risk. Purchasers and seller of options should familiarize themselves with the type of option (i.e., put or call) which they contemplate trading and the associated risks. You should calculate the extent to which the value of the options must increase for your position to become profitable, taking into account the premium and all transaction costs. Spread strategies using combinations of positions, such as spread and straddle positions may be as risky as taking a simple long or short position. Actual results or performance may vary from those expressed or implied herein. Past performance does not guarantee future results. The information and comments contained herein are provided by ADM Investor Services, Inc. ("ADMIS") and NOT ADM. Any reproduction or retransmission of this report without the express written consent of ADMIS is strictly prohibited.

Copyright © ADM Investor Services, Inc.

NATIONAL DAILY DIRECT HOG PRIOR DAY REPORT - SLAUGHTERED SWINE

[HTTPS://WWW.AMS.USDA.GOV/MNREPORTS/AMS_2511.PDF](https://www.ams.usda.gov/mnreports/ams_2511.pdf)

SLAUGHTER DATA FOR FRIDAY, JUNE 12, 2026 AND SATURDAY, JUNE 13, 2026

PRODUCER SOLD:

HEAD COUNT 257,391
AVERAGE LIVE WEIGHT 289.84
AVERAGE CARCASS WEIGHT 215.33

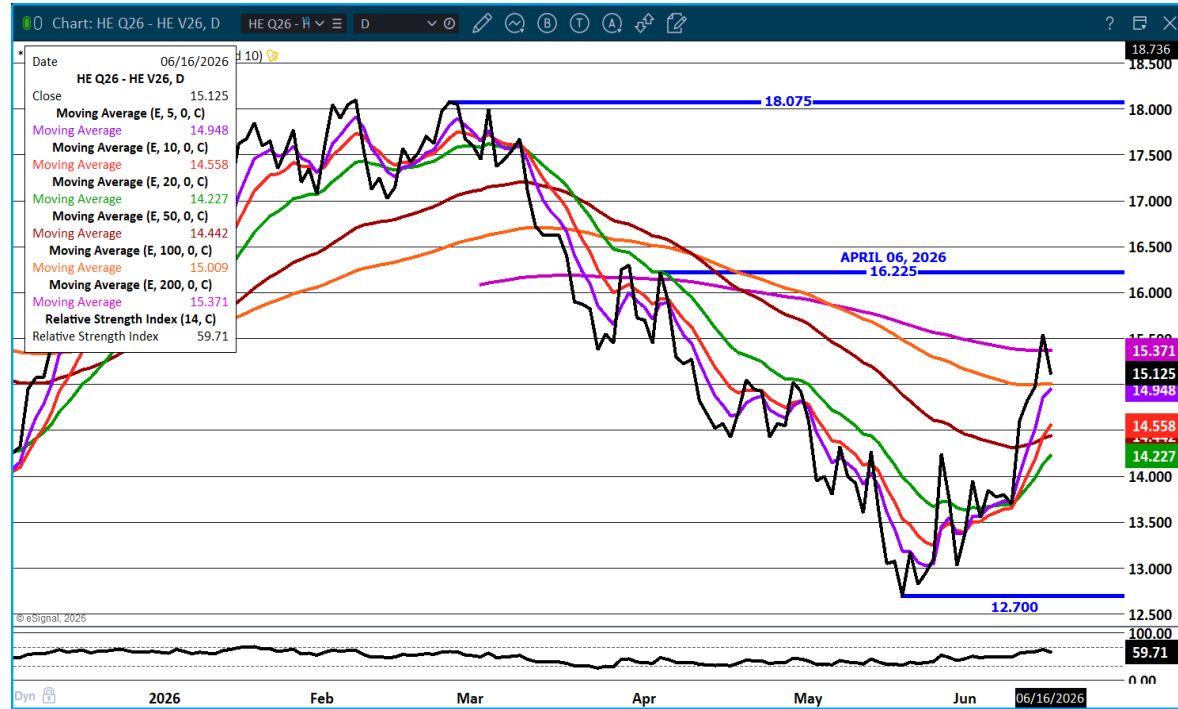
PACKER SOLD:

HEAD COUNT 35,832
AVERAGE LIVE 288.10
AVERAGE CARCASS WEIGHT 217.34

PACKER OWNED:

HEAD COUNT 193,638
AVERAGE 289.52
AVERAGE CARCASS 219.37

AUGUST/OCTOBER HOG SPREAD -



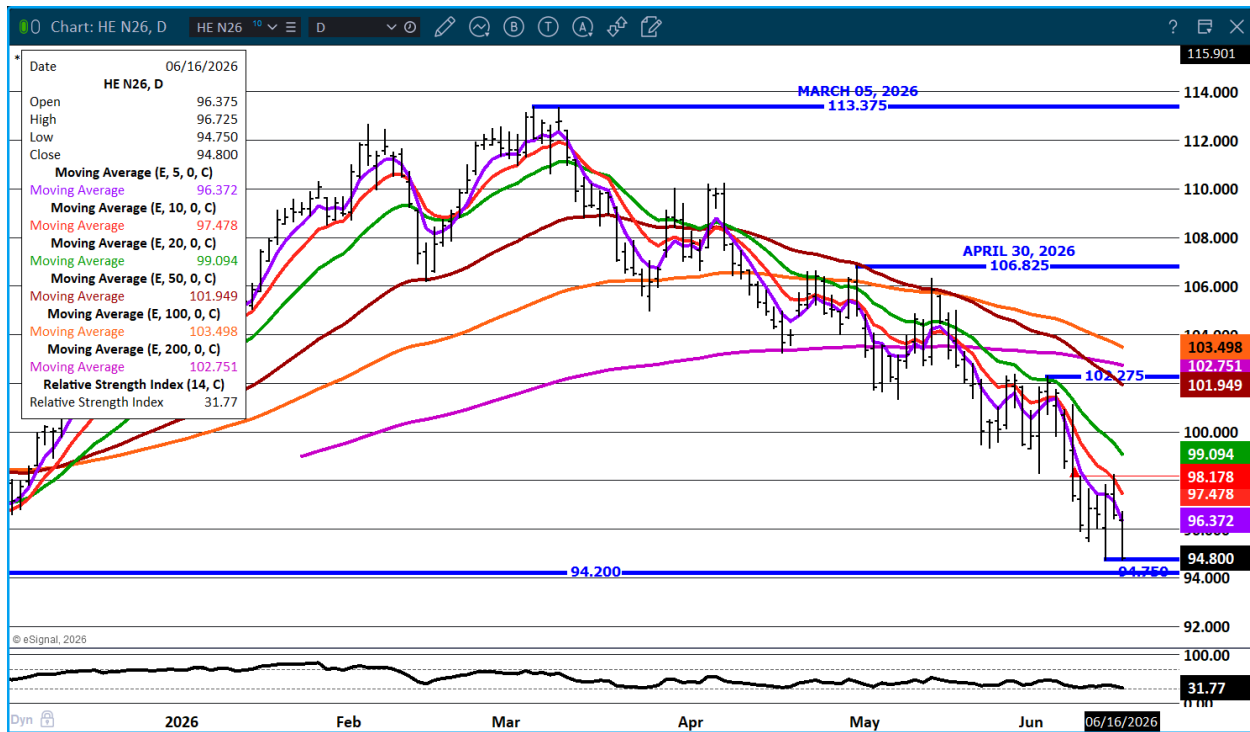
ADMIS.com | 312.242.7000

Chicago | New York | Houston | Amsterdam | London | Hong Kong | Singapore | Taipei

This material is intended to be a solicitation.

Futures and options trading involve significant risk of loss and may not be suitable for everyone. Therefore, carefully consider whether such trading is suitable for you in light of your financial condition. The opinions and viewpoints expressed herein are limited to that of the individual author(s) as of a specified date. They are subject to change based on market conditions or other considerations. They do not constitute individualized recommendations or take into account the financial considerations or trading objectives of individual customers. This publication is intended to assist in your analysis and evaluation of the futures and options markets. However, any decisions to buy, sell or hold a futures or options position are entirely your own and should not in any way deemed to be endorsed by ADM Investor Services, Inc. ("ADMIS"). Transactions in options carry a high degree of risk. Purchasers and seller of options should familiarize themselves with the type of option (i.e., put or call) which they contemplate trading and the associated risks. You should calculate the extent to which the value of the options must increase for your position to become profitable, taking into account the premium and all transaction costs. Spread strategies using combinations of positions, such as spread and straddle positions may be as risky as taking a simple long or short position. Actual results or performance may vary from those expressed or implied herein. Past performance does not guarantee future results. The information and comments contained herein are provided by ADM Investor Services, Inc. ("ADMIS") and NOT ADM. Any reproduction or retransmission of this report without the express written consent of ADMIS is strictly prohibited.

JULY LEAN HOG – 94.20 SUPPORT RESISTANCE AT 96.37



=====

ALL CHARTS: ESIGNAL INTERACTIVE, INC.

=====

ADMIS.com | 312.242.7000

Chicago | New York | Houston | Amsterdam | London | Hong Kong | Singapore | Taipei

This material is intended to be a solicitation.

Futures and options trading involve significant risk of loss and may not be suitable for everyone. Therefore, carefully consider whether such trading is suitable for you in light of your financial condition. The opinions and viewpoints expressed herein are limited to that of the individual author(s) as of a specified date. They are subject to change based on market conditions or other considerations. They do not constitute individualized recommendations or take into account the financial considerations or trading objectives of individual customers. This publication is intended to assist in your analysis and evaluation of the futures and options markets. However, any decisions to buy, sell or hold a futures or options position are entirely your own and should not in any way be deemed to be endorsed by ADM Investor Services, Inc. ("ADMIS"). Transactions in options carry a high degree of risk. Purchasers and seller of options should familiarize themselves with the type of option (i.e., put or call) which they contemplate trading and the associated risks. You should calculate the extent to which the value of the options must increase for your position to become profitable, taking into account the premium and all transaction costs. Spread strategies using combinations of positions, such as spread and straddle positions may be as risky as taking a simple long or short position. Actual results or performance may vary from those expressed or implied herein. Past performance does not guarantee future results. The information and comments contained herein are provided by ADM Investor Services, Inc. ("ADMIS") and NOT ADM. Any reproduction or retransmission of this report without the express written consent of ADMIS is strictly prohibited.

Copyright © ADM Investor Services, Inc.