

Friday, 14 August 2020

Eddie's Crayons...on GRAINS & STARCHES...Part 1

Weekly Technicals from Eddie Tofpik, Head Of Technical Analysis & Senior Markets Analyst at ADMISI

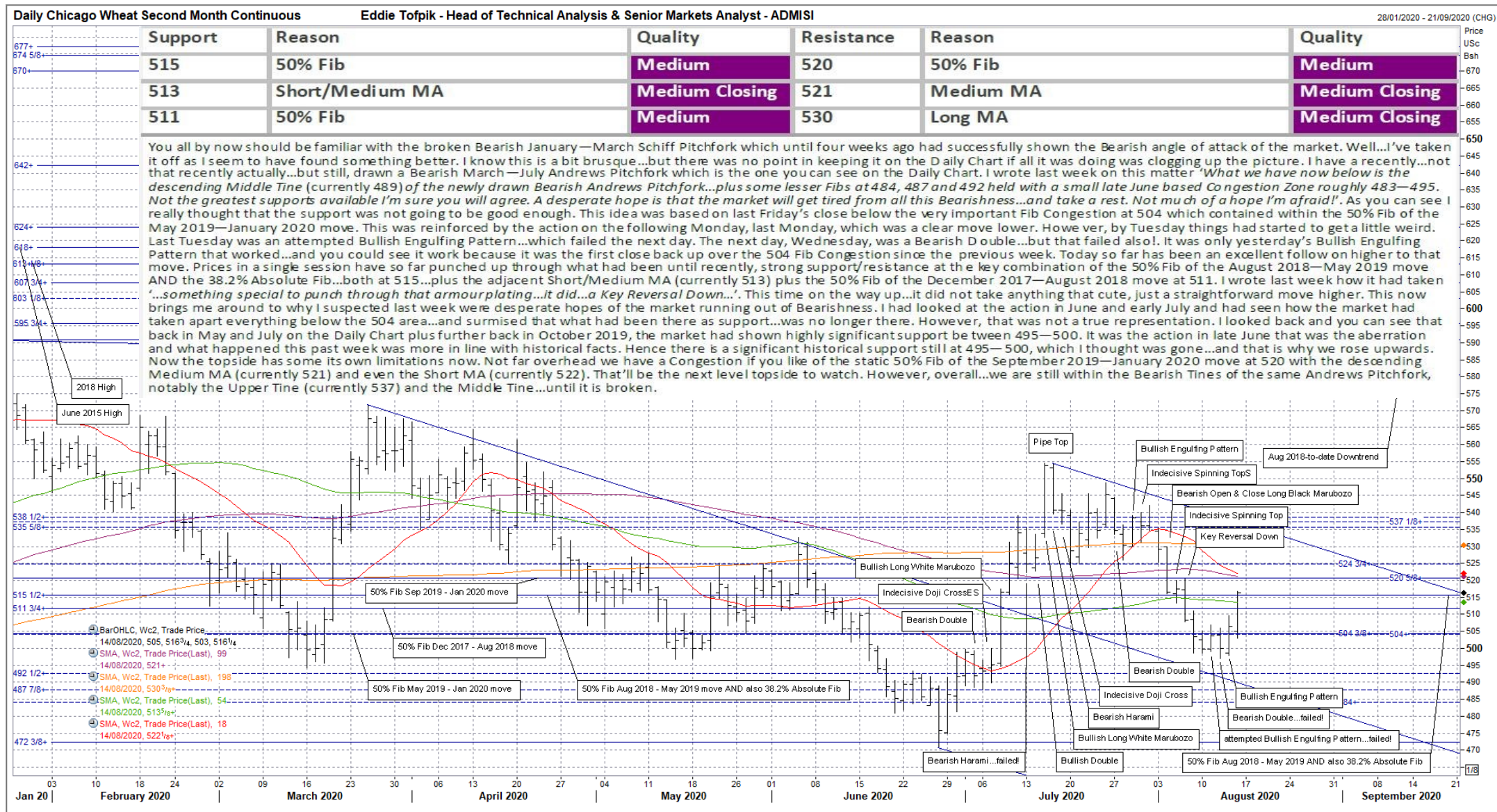
Quality of Support or Resistance...

Low

Medium

Strong

ADM Investor Services International Limited



ADM Investor Services International Limited, registered in England No. 2547805, is authorised and regulated by the Financial Conduct Authority [FRN 148474] and is a member of the London Stock Exchange. Registered office: 4th Floor Millennium Bridge House, 2 Lambeth Hill, London EC4V3TT. A subsidiary of Archer Daniels Midland Company. The information within this publication has been compiled for general purposes only. Although every attempt has been made to ensure the accuracy of the information, ADM Investor Services International Limited (ADMISI) assumes no responsibility for any errors or omissions and will not update it. The views in this publication reflect solely those of the authors and not necessarily those of ADMISI or its affiliated institutions. This publication and information herein should not be considered investment advice nor an offer to sell or an invitation to invest in any products mentioned by ADMISI. © 2020 ADM Investor Services International Limited. Any Charts are powered by Eddie Tofpik with the occasional help of Thomson Reuters Eikon.

www.admisi.com Email technical.analysis@admisi.com for more information or alternatively contact eddie.tofpik@admisi.com

Friday, 14 August 2020

Eddie's Crayons...on GRAINS & STARCHES...Part 1

Weekly Technicals from Eddie Tofpik, Head Of Technical Analysis & Senior Markets Analyst at ADMISI

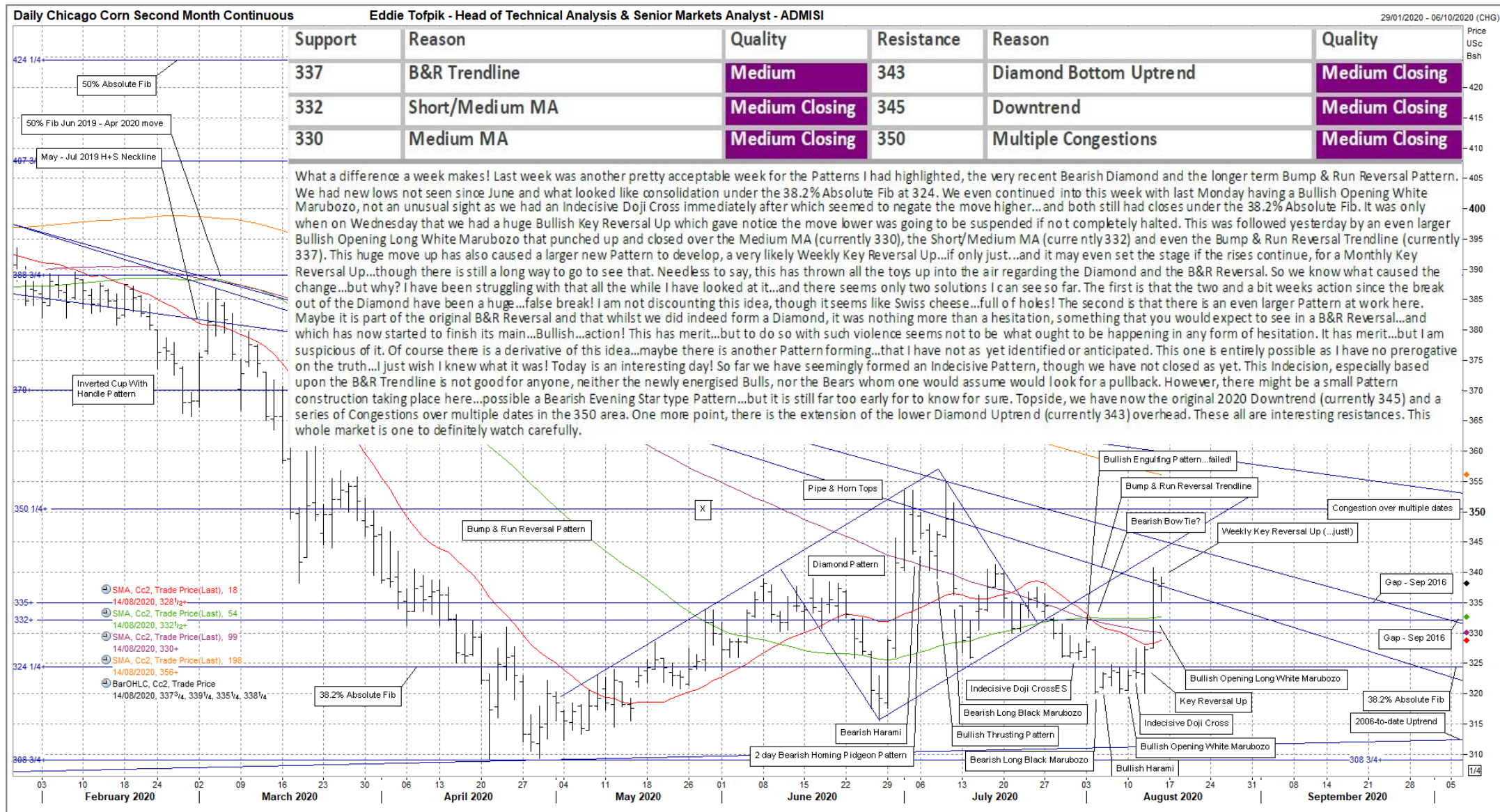
Quality of Support or Resistance...

Low

Medium

Strong

ADM
ADM Investor Services
International Limited



ADM Investor Services International Limited, registered in England No. 2547805, is authorised and regulated by the Financial Conduct Authority [FRN 148474] and is a member of the London Stock Exchange. Registered office: 4th Floor Millennium Bridge House, 2 Lambeth Hill, London EC4V3TT. A subsidiary of Archer Daniels Midland Company. The information within this publication has been compiled for general purposes only. Although every attempt has been made to ensure the accuracy of the information, ADM Investor Services International Limited (ADMISI) assumes no responsibility for any errors or omissions and will not update it. The views in this publication reflect solely those of the authors and not necessarily those of ADMISI or its affiliated institutions. This publication and information herein should not be considered investment advice nor an offer to sell or an invitation to invest in any products mentioned by ADMISI. © 2020 ADM Investor Services International Limited. Any Charts are powered by Eddie Tofpik with the occasional help of Thomson Reuters Eikon.

www.admisi.com Email technical.analysis@admisi.com for more information or alternatively contact eddie.tofpik@admisi.com

Friday, 14 August 2020

Eddie's Crayons...on GRAINS & STARCHES...Part 1

Weekly Technicals from Eddie Tofpik, Head Of Technical Analysis & Senior Markets Analyst at ADMISI

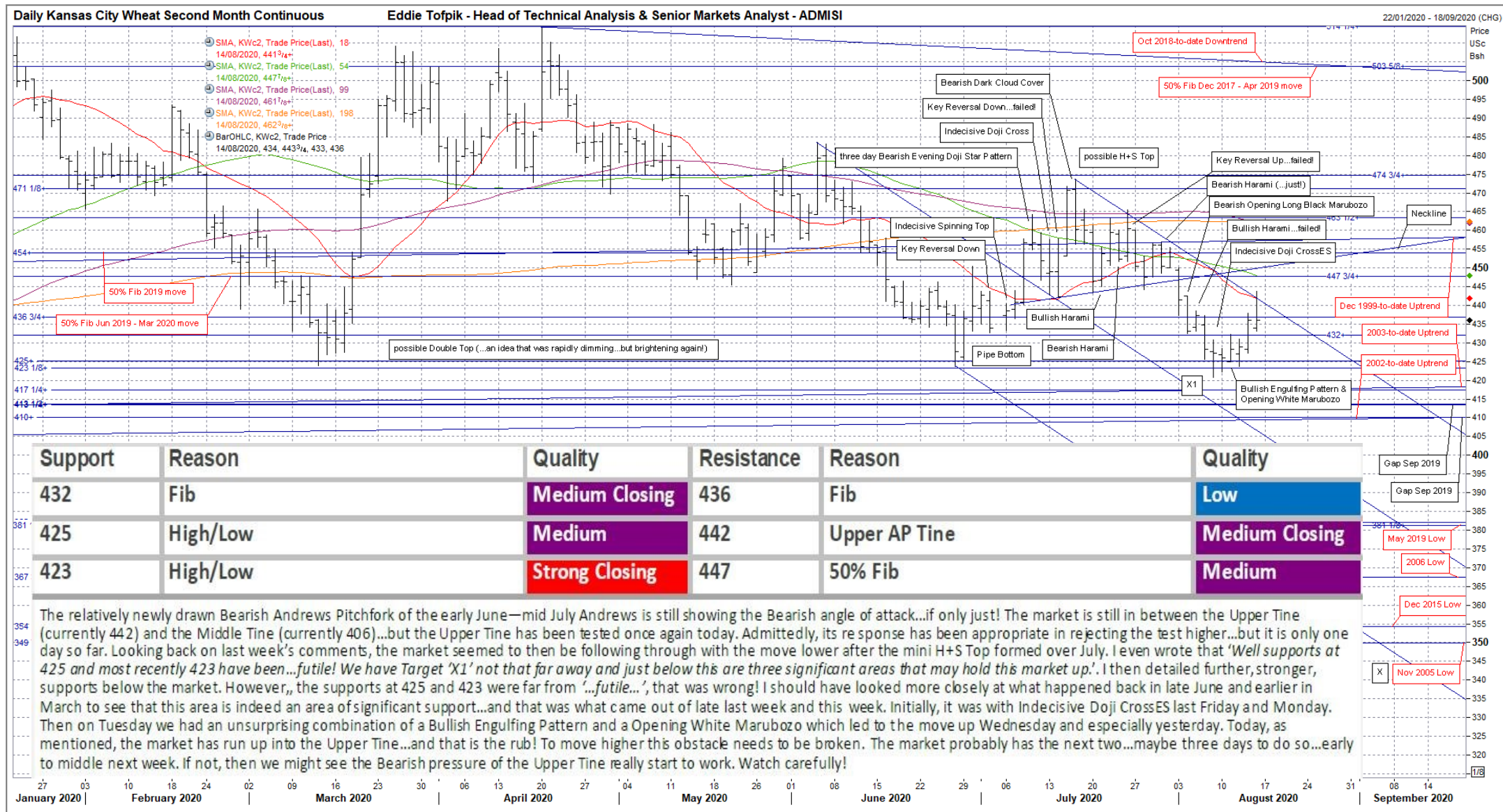
Quality of Support or Resistance...

Low

Medium

Strong

ADM
ADM Investor Services
International Limited



ADM Investor Services International Limited, registered in England No. 2547805, is authorised and regulated by the Financial Conduct Authority [FRN 148474] and is a member of the London Stock Exchange. Registered office: 4th Floor Millennium Bridge House, 2 Lambeth Hill, London EC4V3TT. A subsidiary of Archer Daniels Midland Company. The information within this publication has been compiled for general purposes only. Although every attempt has been made to ensure the accuracy of the information, ADM Investor Services International Limited (ADMISI) assumes no responsibility for any errors or omissions and will not update it. The views in this publication reflect solely those of the authors and not necessarily those of ADMISI or its affiliated institutions. This publication and information herein should not be considered investment advice nor an offer to sell or an invitation to invest in any products mentioned by ADMISI. © 2020 ADM Investor Services International Limited. Any Charts are powered by Eddie Tofpik with the occasional help of Thomson Reuters Eikon.

www.admisi.com Email technical.analysis@admisi.com for more information or alternatively contact eddie.tofpik@admisi.com

Friday, 14 August 2020

Eddie's Crayons...on GRAINS & STARCHES...Part 1

Weekly Technicals from Eddie Tofpik, Head Of Technical Analysis & Senior Markets Analyst at ADMISI

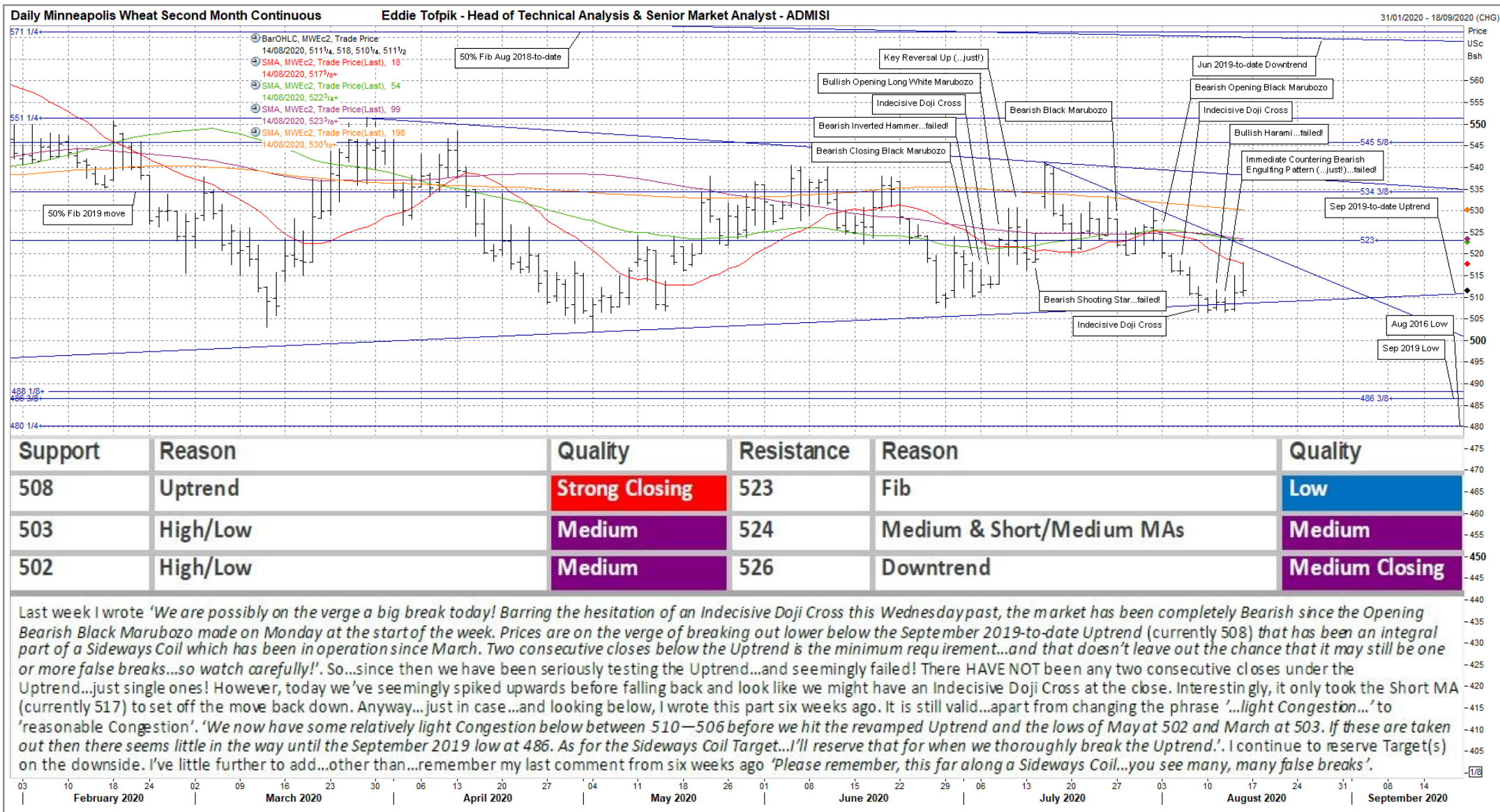
Quality of Support or Resistance...

Low

Medium

Strong

ADM
ADM Investor Services
International Limited



ADM Investor Services International Limited, registered in England No. 2547805, is authorised and regulated by the Financial Conduct Authority [FRN 148474] and is a member of the London Stock Exchange. Registered office: 4th Floor Millennium Bridge House, 2 Lambeth Hill, London EC4V3TT. A subsidiary of Archer Daniels Midland Company. The information within this publication has been compiled for general purposes only. Although every attempt has been made to ensure the accuracy of the information, ADM Investor Services International Limited (ADMISI) assumes no responsibility for any errors or omissions and will not update it. The views in this publication reflect solely those of the authors and not necessarily those of ADMISI or its affiliated institutions. This publication and information herein should not be considered investment advice nor an offer to sell or an invitation to invest in any products mentioned by ADMISI. © 2020 ADM Investor Services International Limited. Any Charts are powered by Eddie Tofpik with the occasional help of Thomson Reuters Eikon.

www.admisi.com Email technical.analysis@admisi.com for more information or alternatively contact eddie.tofpik@admisi.com

Friday, 14 August 2020

Eddie's Crayons...on GRAINS & STARCHES...Part 1

Weekly Technicals from Eddie Tofpik, Head Of Technical Analysis & Senior Markets Analyst at ADMISI

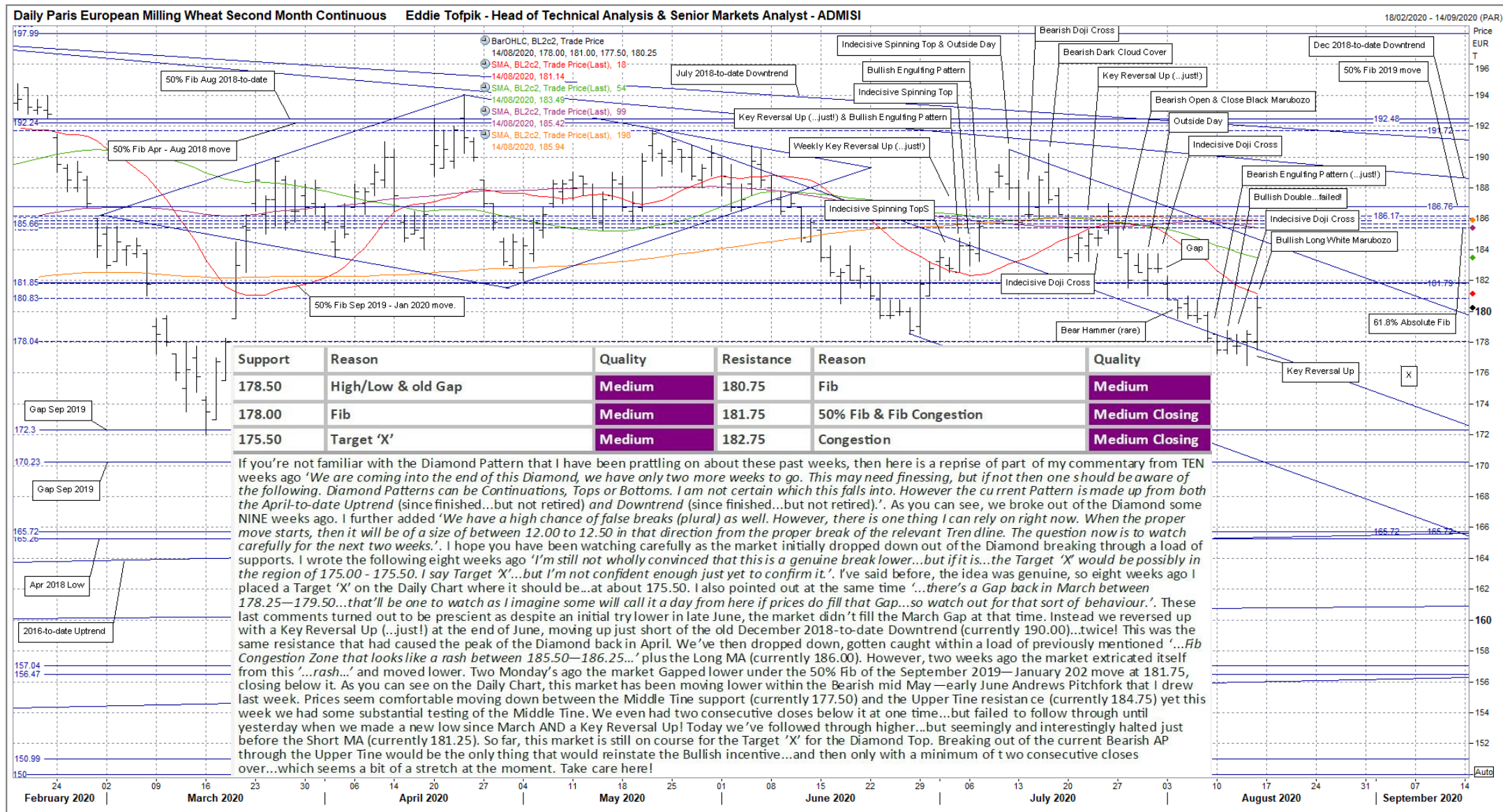
Quality of Support or Resistance...

Low

Medium

Strong

ADM Investor Services International Limited



ADM Investor Services International Limited, registered in England No. 2547805, is authorised and regulated by the Financial Conduct Authority [FRN 148474] and is a member of the London Stock Exchange. Registered office: 4th Floor Millennium Bridge House, 2 Lambeth Hill, London EC4V3TT. A subsidiary of Archer Daniels Midland Company. The information within this publication has been compiled for general purposes only. Although every attempt has been made to ensure the accuracy of the information, ADM Investor Services International Limited (ADMISI) assumes no responsibility for any errors or omissions and will not update it. The views in this publication reflect solely those of the authors and not necessarily those of ADMISI or its affiliated institutions. This publication and information herein should not be considered investment advice nor an offer to sell or an invitation to invest in any products mentioned by ADMISI. © 2020 ADM Investor Services International Limited. Any Charts are powered by Eddie Tofpik with the occasional help of Thomson Reuters Eikon.

www.admisi.com Email technical.analysis@admisi.com for more information or alternatively contact eddie.tofpik@admisi.com

Friday, 14 August 2020

Eddie's Crayons...on GRAINS & STARCHES...Part 1

Weekly Technicals from Eddie Tofpik, Head Of Technical Analysis & Senior Markets Analyst at ADMISI

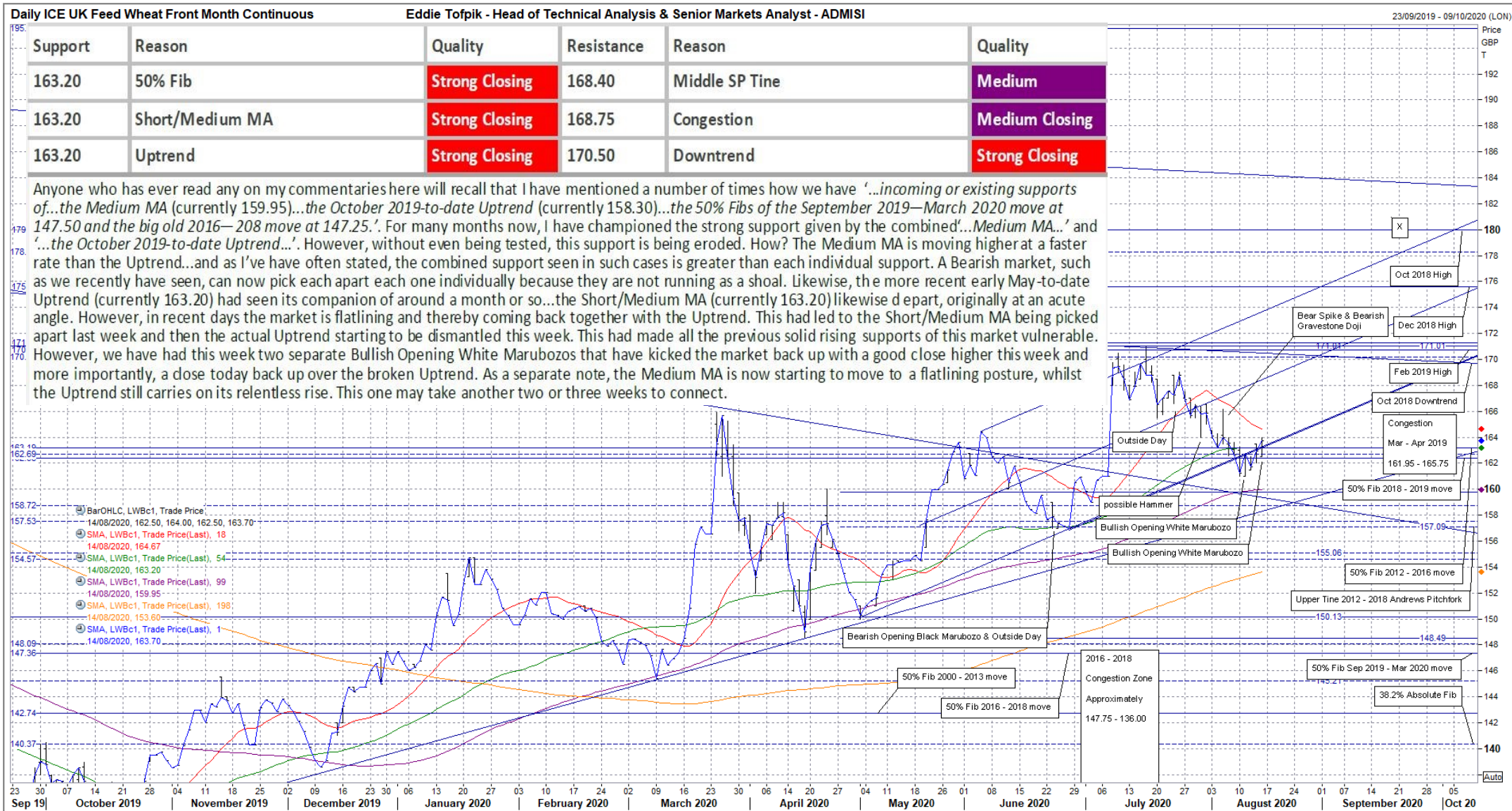
Quality of Support or Resistance...

Low

Medium

Strong

ADM Investor Services International Limited



ADM Investor Services International Limited, registered in England No. 2547805, is authorised and regulated by the Financial Conduct Authority [FRN 148474] and is a member of the London Stock Exchange. Registered office: 4th Floor Millennium Bridge House, 2 Lambeth Hill, London EC4V3TT. A subsidiary of Archer Daniels Midland Company. The information within this publication has been compiled for general purposes only. Although every attempt has been made to ensure the accuracy of the information, ADM Investor Services International Limited (ADMISI) assumes no responsibility for any errors or omissions and will not update it. The views in this publication reflect solely those of the authors and not necessarily those of ADMISI or its affiliated institutions. This publication and information herein should not be considered investment advice nor an offer to sell or an invitation to invest in any products mentioned by ADMISI. © 2020 ADM Investor Services International Limited. Any Charts are powered by Eddie Tofpik with the occasional help of Thomson Reuters Eikon.

www.admisi.com Email technical.analysis@admisi.com for more information or alternatively contact eddie.tofpik@admisi.com

Friday, 14 August 2020

Eddie's Crayons...on GRAINS & STARCHES...Part 1

Weekly Technicals from Eddie Tofpik, Head Of Technical Analysis & Senior Markets Analyst at ADMISI

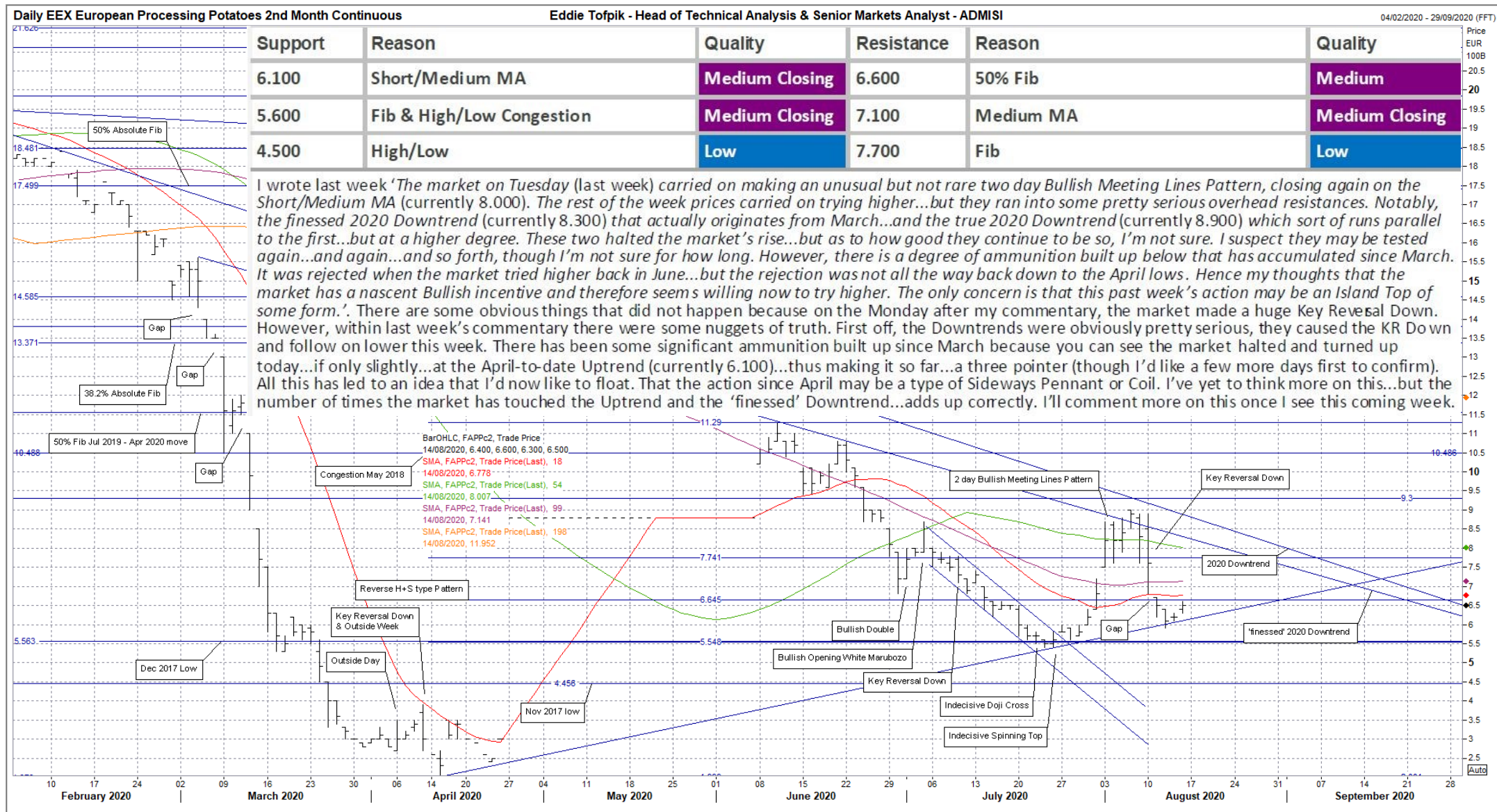
Quality of Support or Resistance...

Low

Medium

Strong

ADM Investor Services International Limited



ADM Investor Services International Limited, registered in England No. 2547805, is authorised and regulated by the Financial Conduct Authority [FRN 148474] and is a member of the London Stock Exchange. Registered office: 4th Floor Millennium Bridge House, 2 Lambeth Hill, London EC4V3TT. A subsidiary of Archer Daniels Midland Company. The information within this publication has been compiled for general purposes only. Although every attempt has been made to ensure the accuracy of the information, ADM Investor Services International Limited (ADMISI) assumes no responsibility for any errors or omissions and will not update it. The views in this publication reflect solely those of the authors and not necessarily those of ADMISI or its affiliated institutions. This publication and information herein should not be considered investment advice nor an offer to sell or an invitation to invest in any products mentioned by ADMISI. © 2020 ADM Investor Services International Limited. Any Charts are powered by Eddie Tofpik with the occasional help of Thomson Reuters Eikon.

www.admisi.com Email technical.analysis@admisi.com for more information or alternatively contact eddie.tofpik@admisi.com