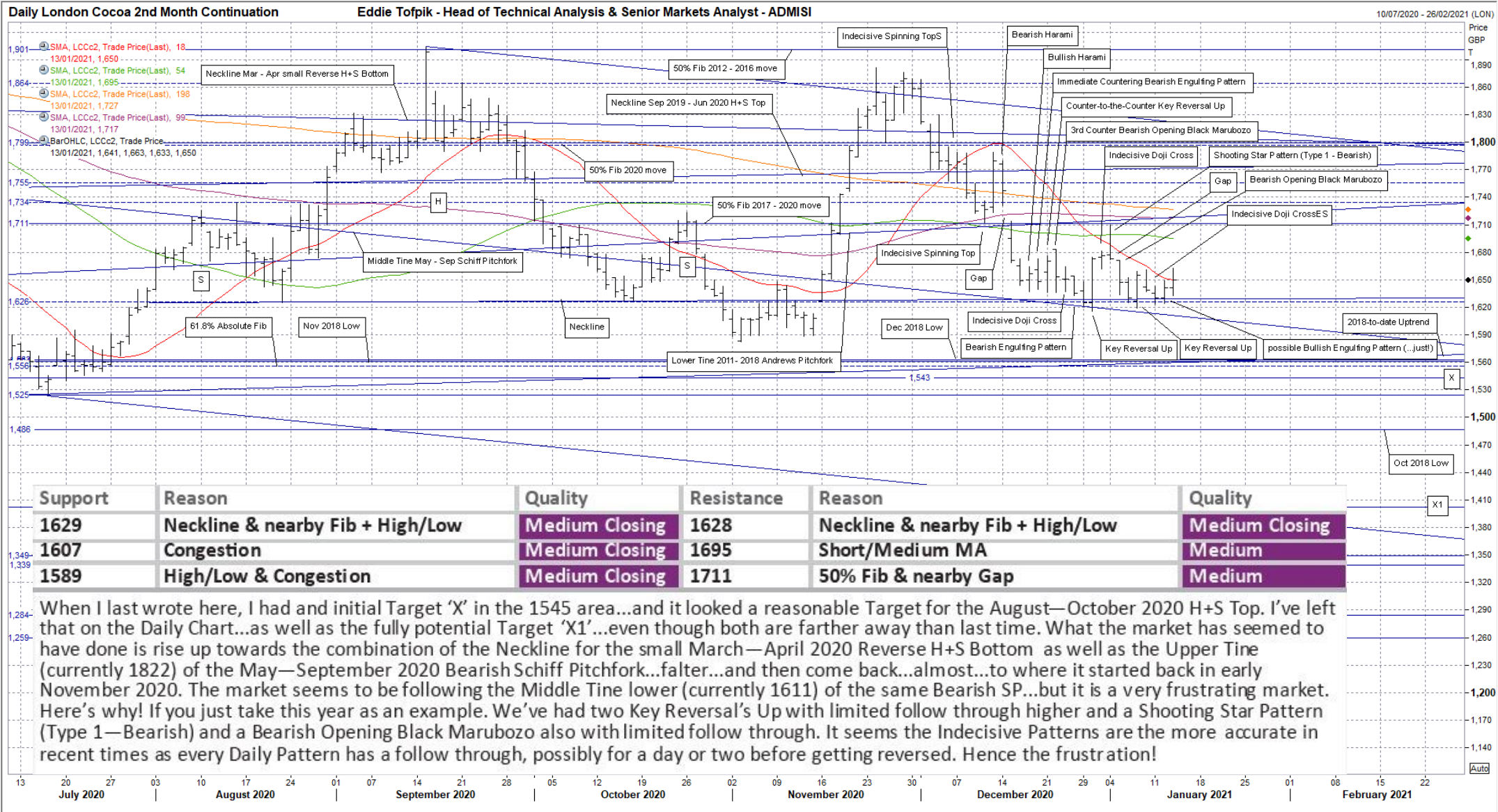


Eddie's Crayons...on SOFTS (Part 2) COCOA, FIBRE, DAIRY & RUBBER!

Weekly Technicals from Eddie Tofpik, Head Of Technical Analysis & Senior Markets Analyst at ADMISI

Low Medium Strong

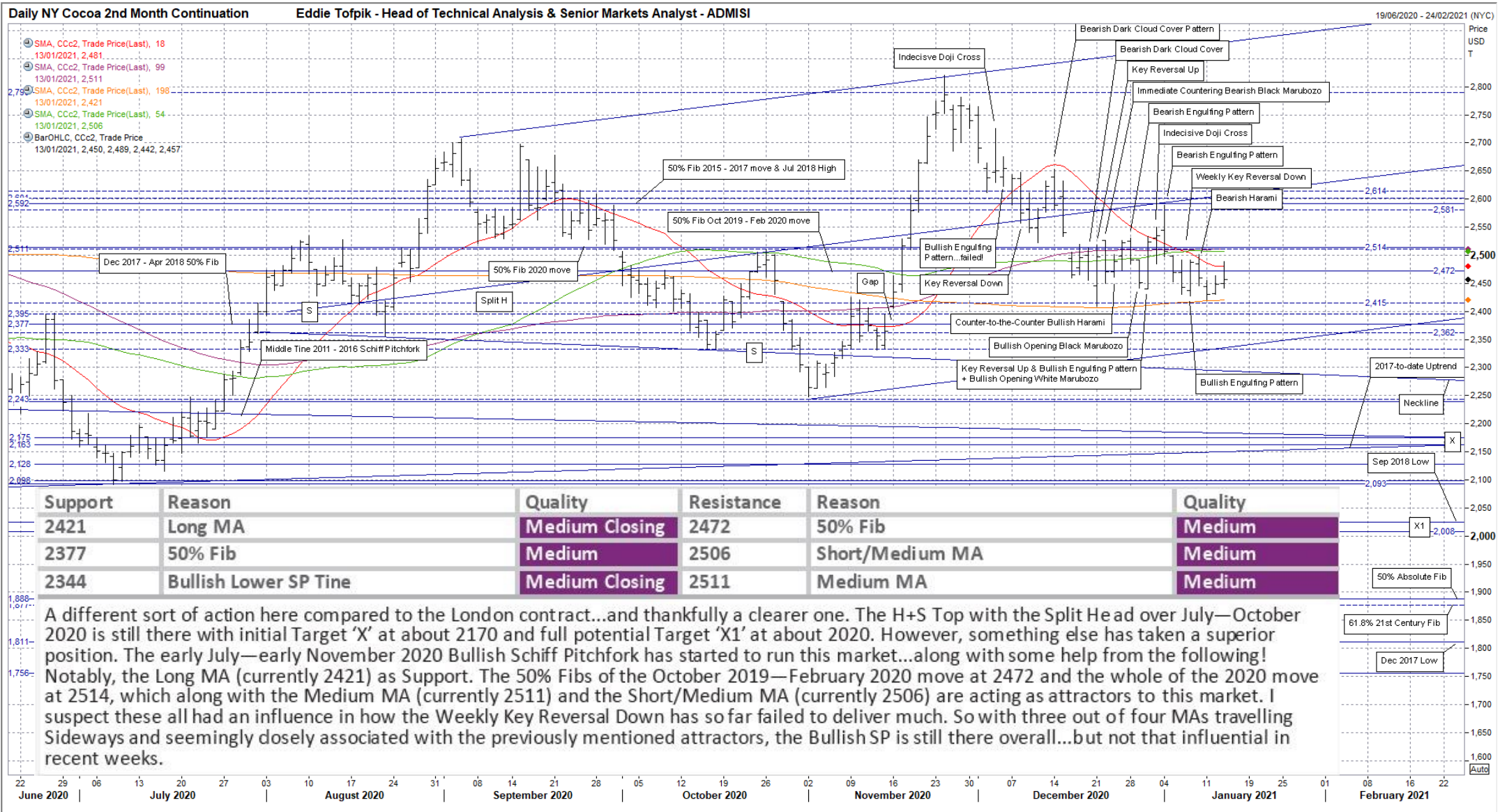


ADM Investor Services International Limited, registered in England No. 2547805, is authorised and regulated by the Financial Conduct Authority [FRN 148474] and is a member of the London Stock Exchange. Registered office: 3rd Floor, The Minster Building, 21 Mincing Lane, LONDON EC3R 7AG. A subsidiary of Archer Daniels Midland Company. The information within this publication has been compiled for general purposes only. Although every attempt has been made to ensure the accuracy of the information, ADM Investor Services International Limited (ADMISI) assumes no responsibility for any errors or omissions and will not update it. The views in this publication reflect solely those of the authors and not necessarily those of ADMISI or its affiliated institutions. This publication and information herein should not be considered investment advice nor an offer to sell or an invitation to invest in any products mentioned by ADMISI. © 2021 ADM Investor Services International Limited. Any Charts are powered by Eddie Tofpik with the occasional help of Thomson Reuters Eikon.

Eddie's Crayons...on SOFTS (Part 2) COCOA, FIBRE, DAIRY & RUBBER!

Weekly Technicals from Eddie Tofpik, Head Of Technical Analysis & Senior Markets Analyst at ADMISI

Low Medium Strong



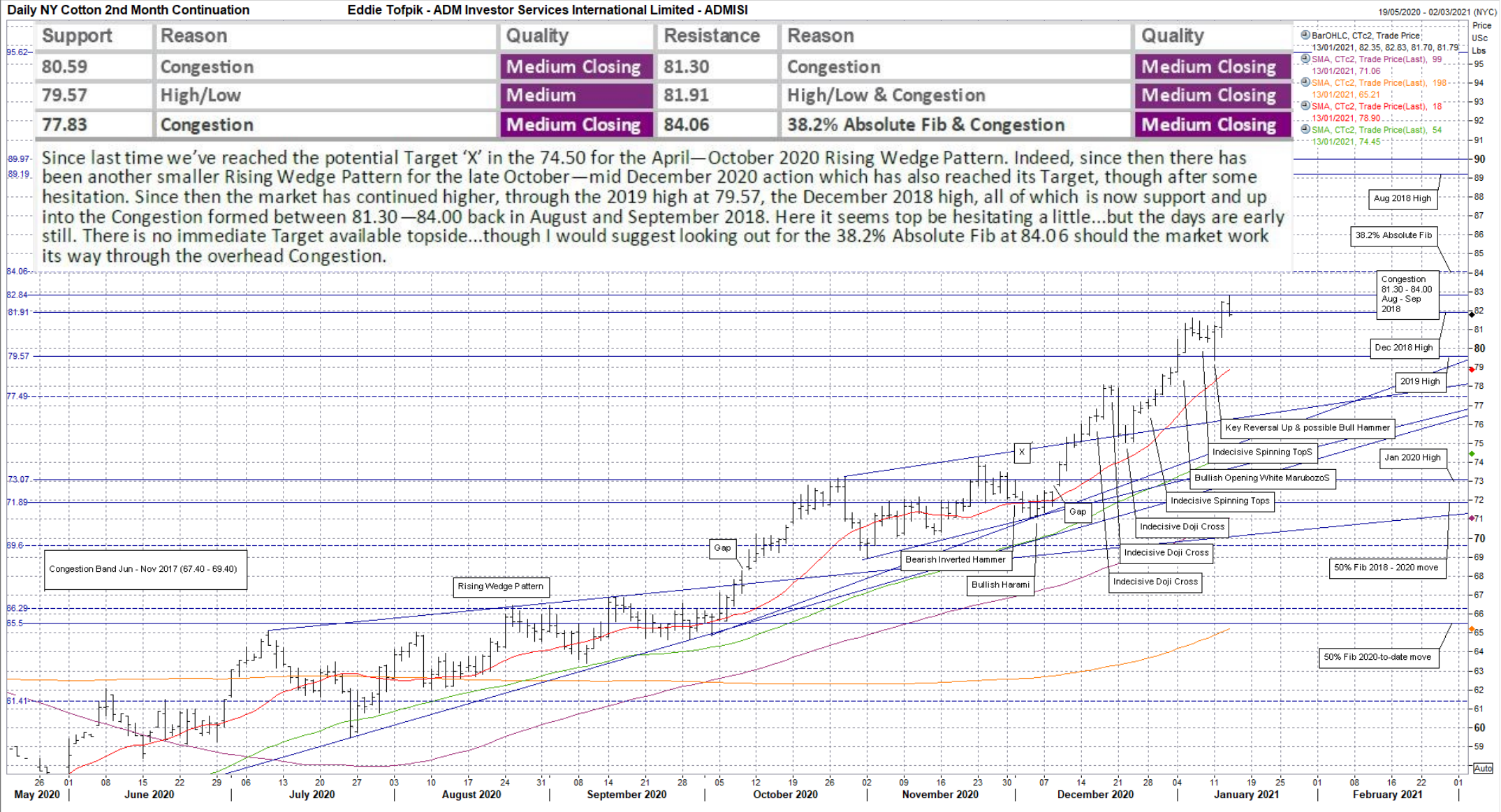
ADM Investor Services International Limited, registered in England No. 2547805, is authorised and regulated by the Financial Conduct Authority [FRN 148474] and is a member of the London Stock Exchange. Registered office: 3rd Floor, The Minster Building, 21 Mincing Lane, LONDON EC3R 7AG. A subsidiary of Archer Daniels Midland Company. The information within this publication has been compiled for general purposes only. Although every attempt has been made to ensure the accuracy of the information, ADM Investor Services International Limited (ADMISI) assumes no responsibility for any errors or omissions and will not update it. The views in this publication reflect solely those of the authors and not necessarily those of ADMISI or its affiliated institutions. This publication and information herein should not be considered investment advice nor an offer to sell or an invitation to invest in any products mentioned by ADMISI. © 2021 ADM Investor Services International Limited. Any Charts are powered by Eddie Tofpik with the occasional help of Thomson Reuters Eikon.



Eddie's Crayons...on SOFTS (Part 2) COCOA, FIBRE, DAIRY & RUBBER!

Weekly Technicals from Eddie Tofpik, Head Of Technical Analysis & Senior Markets Analyst at ADMISI

Low	Medium	Strong
-----	--------	--------



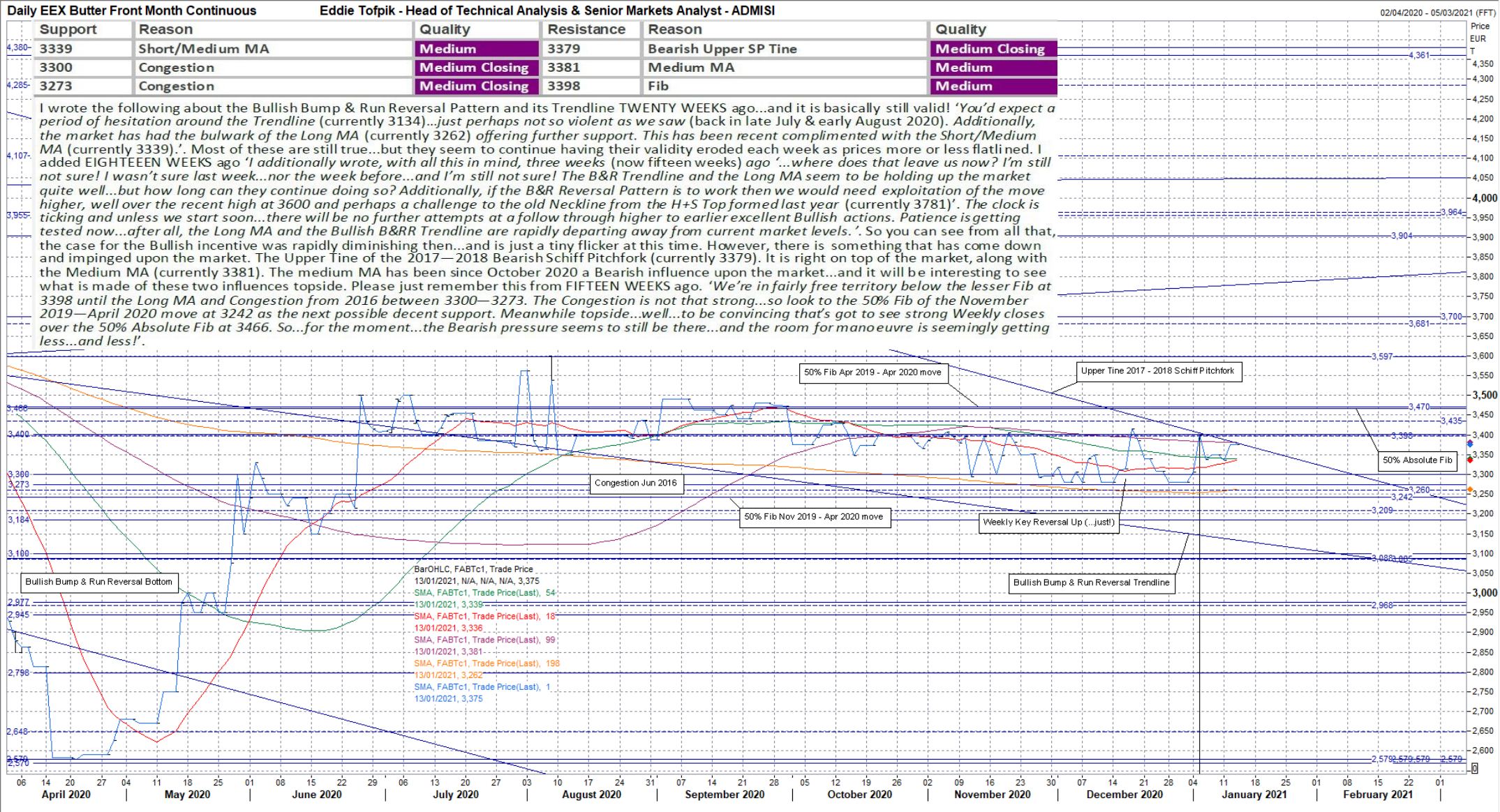
ADM Investor Services International Limited, registered in England No. 2547805, is authorised and regulated by the Financial Conduct Authority [FRN 148474] and is a member of the London Stock Exchange. Registered office: 3rd Floor, The Minster Building, 21 Mincing Lane, LONDON EC3R 7AG. A subsidiary of Archer Daniels Midland Company. The information within this publication has been compiled for general purposes only. Although every attempt has been made to ensure the accuracy of the information, ADM Investor Services International Limited (ADMISI) assumes no responsibility for any errors or omissions and will not update it. The views in this publication reflect solely those of the authors and not necessarily those of ADMISI or its affiliated institutions. This publication and information herein should not be considered investment advice nor an offer to sell or an invitation to invest in any products mentioned by ADMISI. © 2021 ADM Investor Services International Limited. Any Charts are powered by Eddie Tofpik with the occasional help of Thomson Reuters Eikon.



Eddie's Crayons...on SOFTS (Part 2) COCOA, FIBRE, DAIRY & RUBBER!

Weekly Technicals from Eddie Tofpik, Head Of Technical Analysis & Senior Markets Analyst at ADMISI

Low	Medium	Strong
-----	--------	--------



ADM Investor Services International Limited, registered in England No. 2547805, is authorised and regulated by the Financial Conduct Authority [FRN 148474] and is a member of the London Stock Exchange. Registered office: 3rd Floor, The Minster Building, 21 Mincing Lane, LONDON EC3R 7AG. A subsidiary of Archer Daniels Midland Company. The information within this publication has been compiled for general purposes only. Although every attempt has been made to ensure the accuracy of the information, ADM Investor Services International Limited (ADMISI) assumes no responsibility for any errors or omissions and will not update it. The views in this publication reflect solely those of the authors and not necessarily those of ADMISI or its affiliated institutions. This publication and information herein should not be considered investment advice nor an offer to sell or an invitation to invest in any products mentioned by ADMISI. © 2021 ADM Investor Services International Limited. Any Charts are powered by Eddie Tofpik with the occasional help of Thomson Reuters Eikon.

Eddie's Crayons...on SOFTS (Part 2) COCOA, FIBRE, DAIRY & RUBBER!

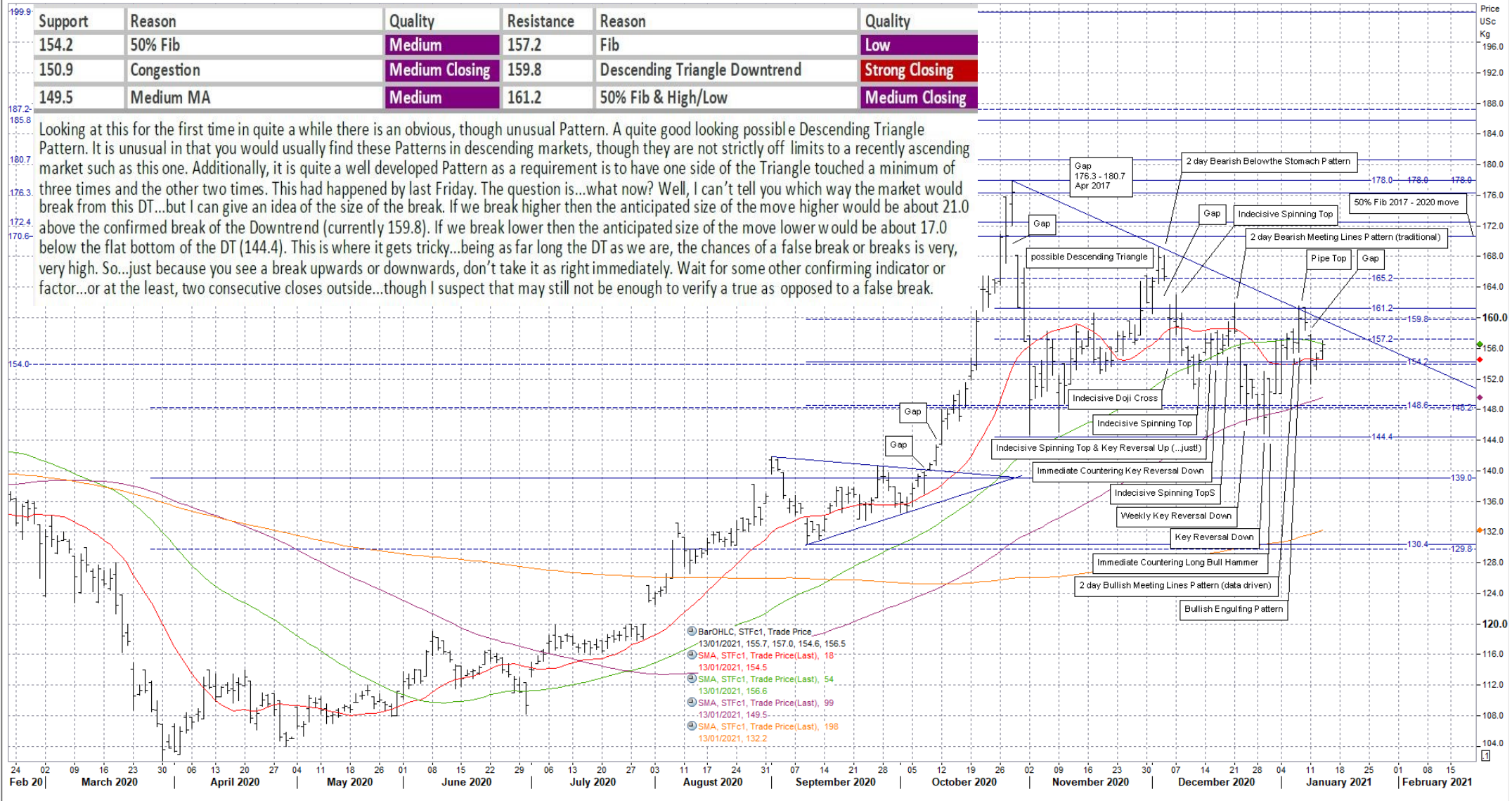
Weekly Technicals from Eddie Tofpik, Head Of Technical Analysis & Senior Markets Analyst at ADMISI

Low	Medium	Strong
-----	--------	--------

Daily SGX SICOM TSR20 Rubber Front Month Continuous

Eddie Tofpik - Head of Technical Analysis & Senior Markets Analyst - ADMISI

21/02/2020 - 19/02/2021 (SIN)



ADM Investor Services International Limited, registered in England No. 2547805, is authorised and regulated by the Financial Conduct Authority [FRN 148474] and is a member of the London Stock Exchange. Registered office: 3rd Floor, The Minster Building, 21 Mincing Lane, LONDON EC3R 7AG. A subsidiary of Archer Daniels Midland Company. The information within this publication has been compiled for general purposes only. Although every attempt has been made to ensure the accuracy of the information, ADM Investor Services International Limited (ADMISI) assumes no responsibility for any errors or omissions and will not update it. The views in this publication reflect solely those of the authors and not necessarily those of ADMISI or its affiliated institutions. This publication and information herein should not be considered investment advice nor an offer to sell or an invitation to invest in any products mentioned by ADMISI. © 2021 ADM Investor Services International Limited. Any Charts are powered by Eddie Tofpik with the occasional help of Thomson Reuters Eikon.